

Legacy Ranch Tract 7
Tract 7 S Elwood Avenue
Glenpool, OK 74033

\$575,000
18.02± Acres
Tulsa County



Legacy Ranch Tract 7
Glenpool, OK / Tulsa County

SUMMARY

Address

Tract 7 S Elwood Avenue

City, State Zip

Glenpool, OK 74033

County

Tulsa County

Type

Undeveloped Land

Latitude / Longitude

35.963471 / -95.997576

Acreage

18.02

Price

\$575,000

Property Website

<https://whiteoakrealestate.com/property/legacy-ranch-tract-7/tulsa/oklahoma/104993/>



Legacy Ranch Tract 7 Glenpool, OK / Tulsa County

PROPERTY DESCRIPTION

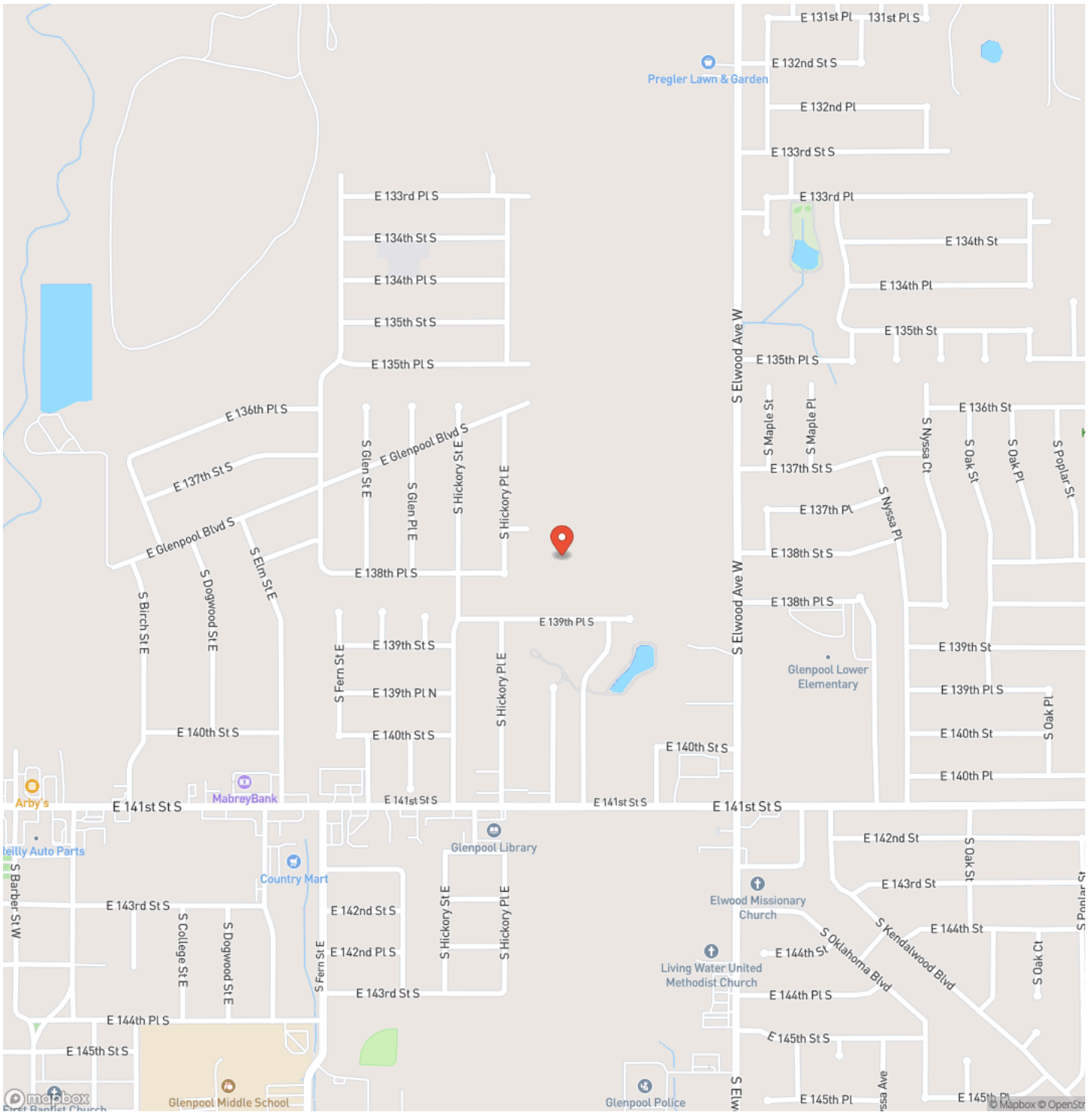
Premier 18.02 +/- acre tract available in Glenpool, Oklahoma! This stunning property offers endless possibilities for investors, developers, or buyers looking to build a private ranch-style estate with room to grow. Featuring expansive open acreage, beautiful topography, and an amazing creek, this property combines scenic natural features with excellent accessibility. Tract has direct access to Elwood as well as access from the neighborhood to the west, providing added convenience and future flexibility. Ideal for custom homes, recreational use, livestock, or future development potential. Located in a fast-growing area with easy access to Tulsa, Jenks, and Glenpool amenities. Don't miss the chance to secure a large acreage tract in a highly desirable location.



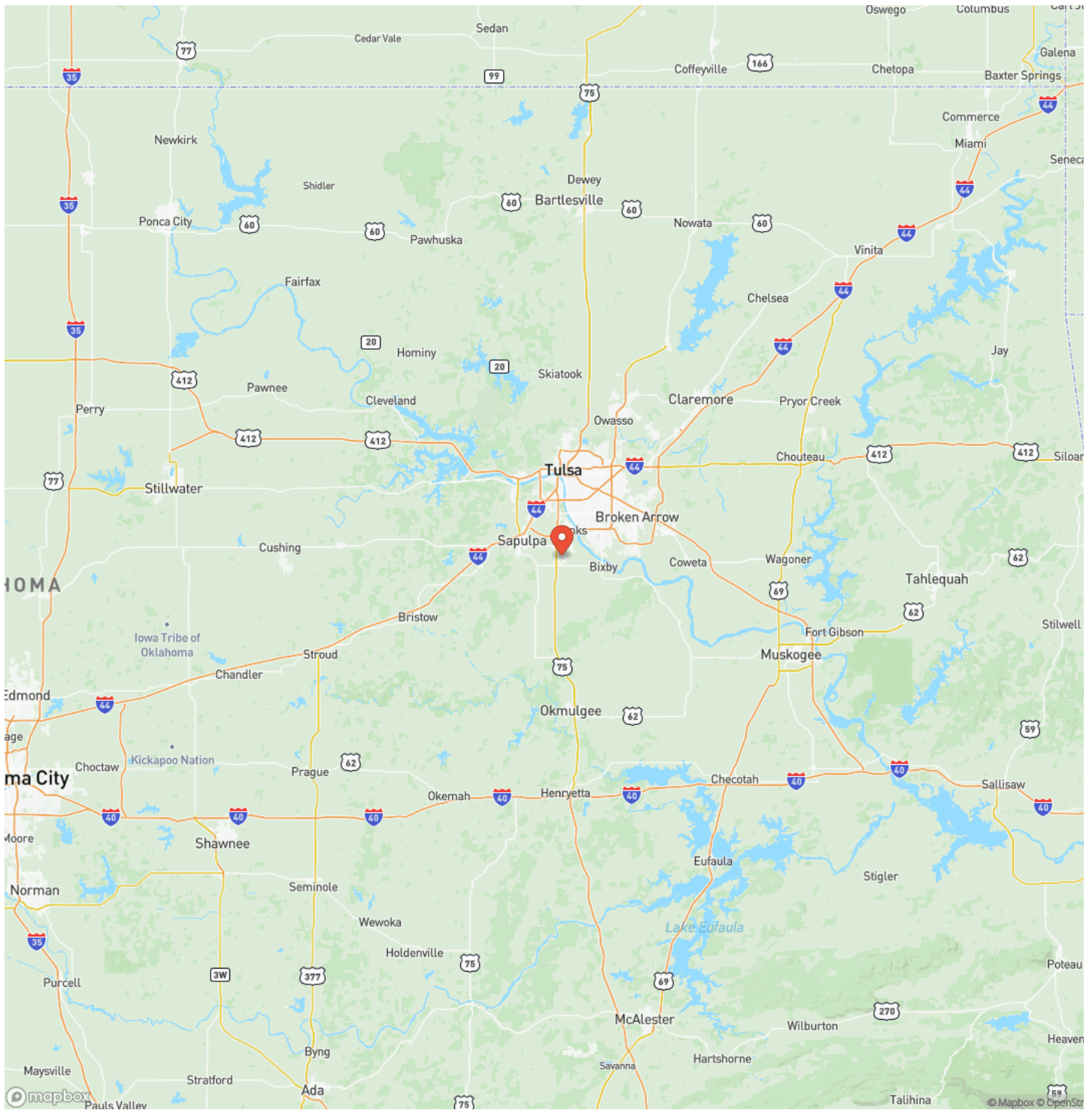
Legacy Ranch Tract 7
Glenpool, OK / Tulsa County



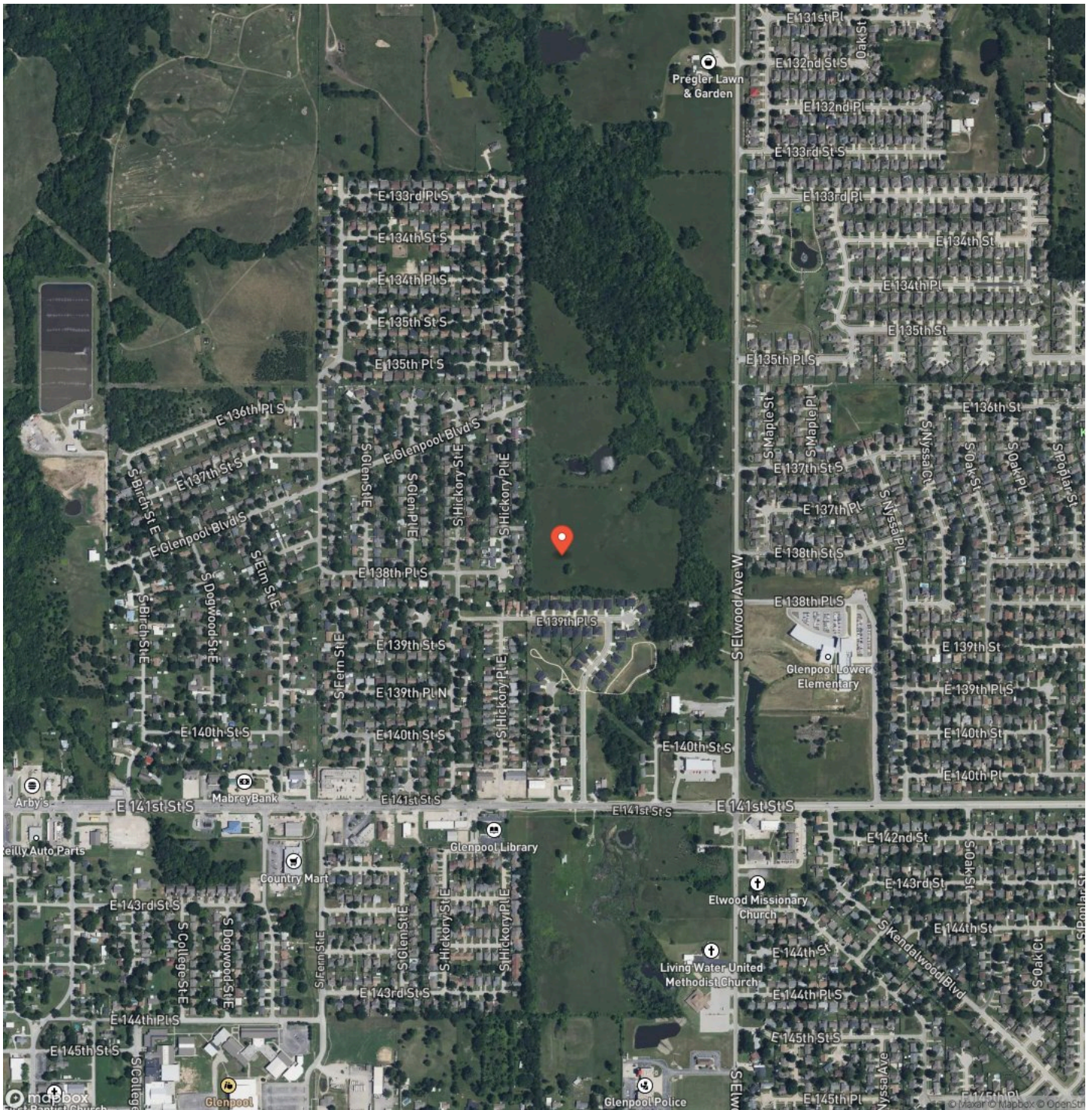
Locator Map



Locator Map



Satellite Map



DISCLAIMERS

Boundary lines are approximate and for illustrative purposes only. No representation or warranty is made as to accuracy. Buyer to verify all boundaries by independent survey



White Oak Real Estate Group
4835 S. Fulton Ave, Ste. 100
Tulsa, OK 74066
(918) 607-1006
<https://whiteoakrealestate.com/>

