

The Farm at Rocky Mount
826 Fire Tower Rd
Plain Dealing, LA 71064

\$1,462,000
220± Acres
Bossier County



**The Farm at Rocky Mount
Plain Dealing, LA / Bossier County**

SUMMARY

Address

826 Fire Tower Rd

City, State Zip

Plain Dealing, LA 71064

County

Bossier County

Type

Hunting Land, Recreational Land

Latitude / Longitude

32.8630878 / -93.6022397

Acreage

220

Price

\$1,462,000

Property Website

<https://www.mossoakpropertiesla.com/property/the-farm-at-rocky-mount-bossier-louisiana/103823/>



PROPERTY DESCRIPTION

The Farm at Rocky Mount

ID # LABOSSJK220

220± Acres with Home, Ponds, Timber, Pasture & Turn-Key Improvements

826 Fire Tower Road, Plain Dealing, Louisiana 71064

The Farm at Rocky Mount is a rare turn-key North Louisiana farm, hunting, and recreational property located at **826 Fire Tower Road in Plain Dealing, LA**. Consisting of approximately **220± acres** of pine timber, hardwoods, open pasture, ponds, trails and a functional country home. This property offers the kind of complete rural retreat that is increasingly difficult to find in today's market.

Held by the same family for approximately **96 years**, this Bossier Parish property has the character, history and improvements that make it ideal for a buyer seeking a private family farm, weekend retreat, hunting property, timberland investment or full-time rural residence.

At the heart of the property is a **traditional 2,600± square foot home**, originally built in 1951, featuring **3 bedrooms and 2 bathrooms**. The home includes most furniture in the sale and has a lightly used HVAC system that is approximately three years old. With a fully stocked kitchen, furnishings and major equipment included, this property is truly set up as a **show-up-and-enjoy turn-key farm**.

The land features a strong mix of **pine timber, hardwoods, pastureland, and wildlife habitat**. Four ponds are located on the property, including two ponds with new docks, creating excellent opportunities for fishing, family recreation, livestock water and scenic enjoyment. A signature feature of the farm is a beautiful **100-year-old oak tree** located in the pasture, adding both character and a classic Southern farm setting.

The property has been **newly surveyed**, is well marked and includes approximately **one-half mile of frontage on Fire Tower Road**. Access is excellent with **four gated entry points** and a perimeter trail system around the entire property, along with additional internal trails throughout the land. These trails provide easy access for hunting, riding, checking fences, managing timber, and enjoying the property by side-by-side or ATV.

For the outdoorsman, The Farm at Rocky Mount is already equipped with **two brand-new Antler Shed deer stands** and **two 400-pound capacity feeders**. The combination of woods, pasture, ponds, trails and edge habitat creates a strong recreational setup for deer hunting, wildlife viewing and year-round outdoor use.

The improvements include a barn with loft and implement storage, suitable for equipment, tractor storage, trailers, tools and general farm use. A woodworking shop is attached to the barn, making the property even more appealing for buyers who need space for hobbies, maintenance, equipment or rural projects.

Whether you are looking for a **North Louisiana hunting property**, a **Bossier Parish farm for sale**, a **turn-key recreational retreat** or a private rural homestead with land, water, timber, pasture and improvements, The Farm at Rocky Mount checks the boxes.

This is not just raw land. It is a well-kept family farm with history, access, improvements, equipment, water features, trails and immediate usability.

Property Highlights



Property Name: The Farm at Rocky Mount
Location: 826 Fire Tower Road, Plain Dealing, LA 71064
Acreage: 220± acres
Parish: Bossier Parish, Louisiana
Home: 2,600± sq. ft., 3 bedroom / 2 bath, built in 1951
Land Mix: Pine timber, hardwoods, pastureland, trails and ponds
Water Features: 4 ponds, including 2 with new docks
Access: Approximately 1/2 mile of frontage on Fire Tower Road
Survey: Newly surveyed and well marked
Gates: 4 access points
Trails: Perimeter trail around the property plus additional internal trails
Improvements: Barn with loft, implement storage, woodworking shop
Hunting Setup: 2 new Antler Shed deer stands and 2 large-capacity feeders
Signature Feature: 100-year-old oak tree in the pasture
Extras Included: Mower, log splitter, fuel tank, furniture, kitchen items, security cameras and more.

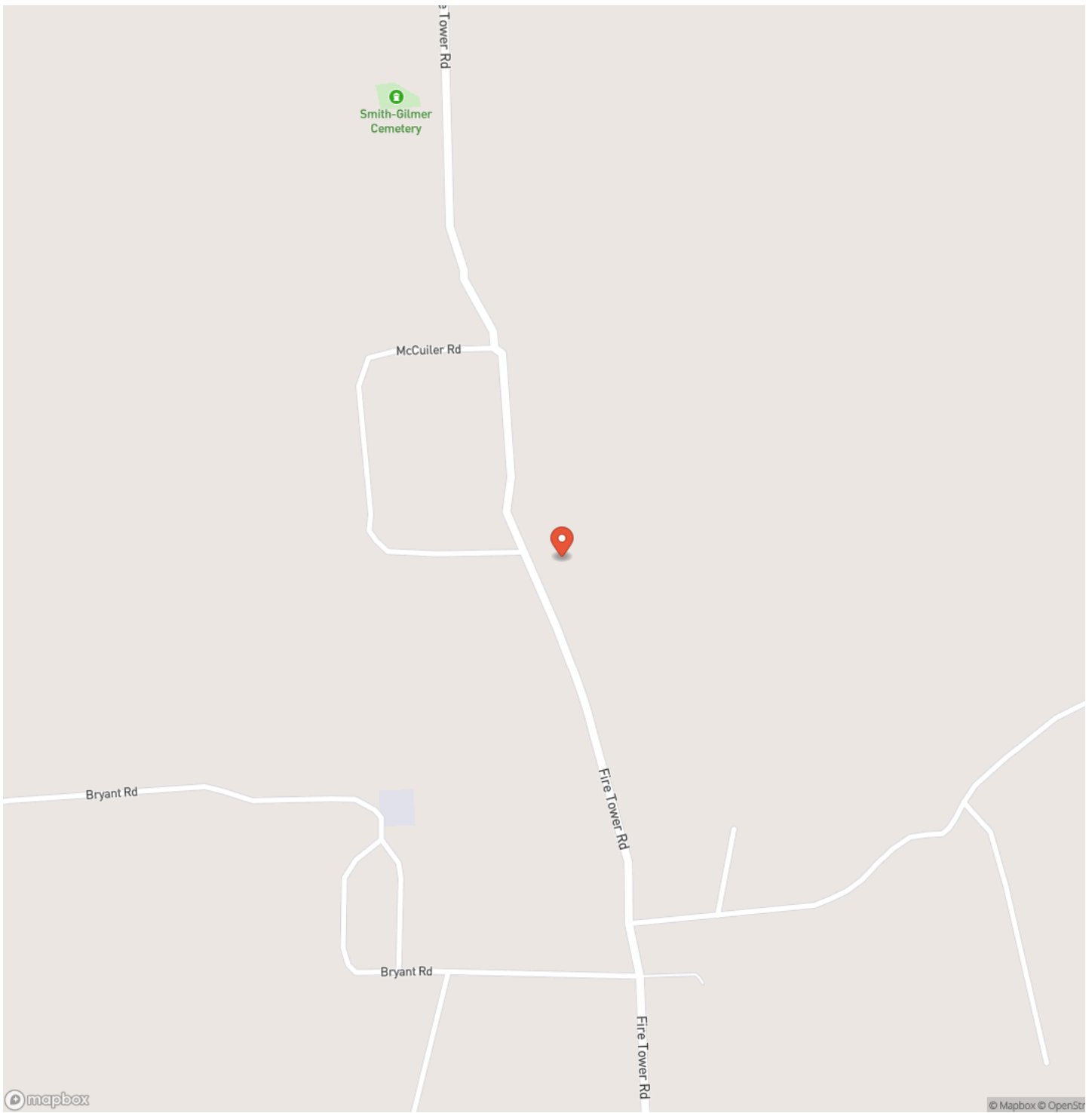
For tour, Contact J.J. Keeth at 318.470.0483 or jkeeth@mossyoakproperties.com



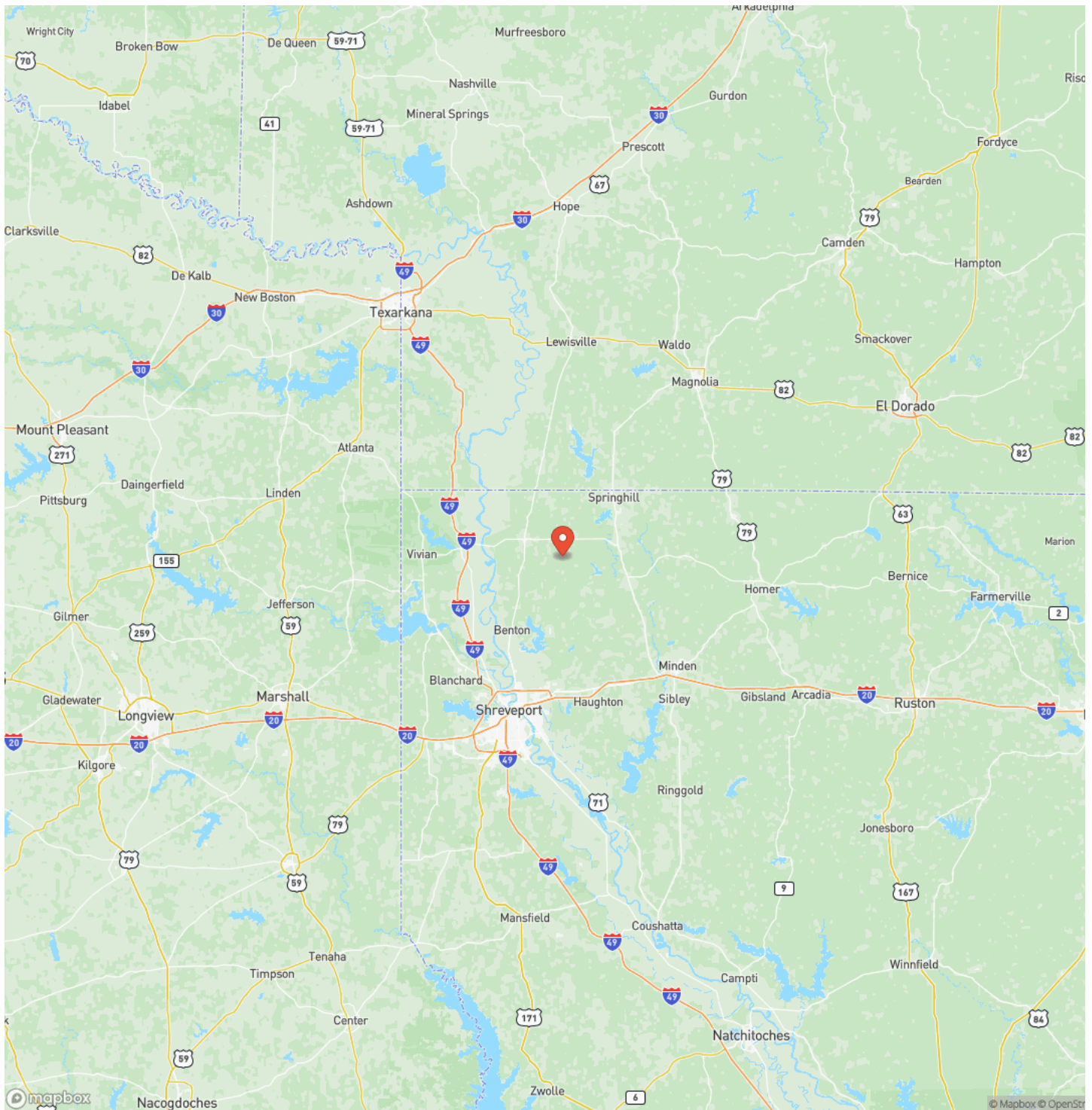
The Farm at Rocky Mount
Plain Dealing, LA / Bossier County



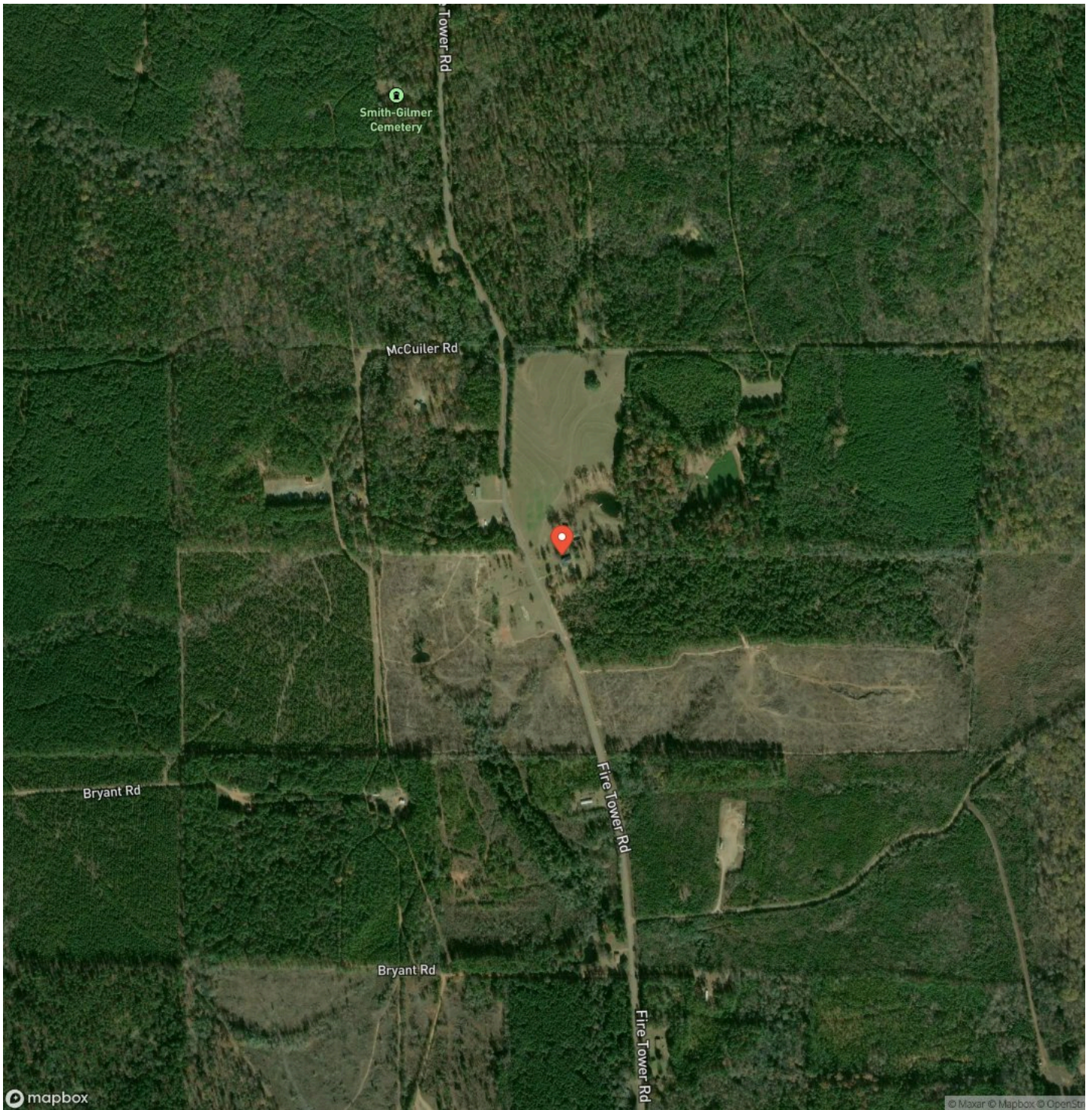
Locator Map



Locator Map



Satellite Map



DISCLAIMERS

Information in this brochure is provided solely for information purposes and does not constitute an offer to sell or advertise real estate outside the states in which broker or agent licensed. The information presented has been obtained from sources deemed to be reliable, but is not guaranteed or warranted by the agent, broker, or the sellers of these properties. This offering is subject to errors, omissions, prior sale, price change, correction or withdrawal from the market without notice. All references to age, square footage, income, expenses, acreage, carrying capacity, and land classification, etc. are approximate. Prospective buyers are chargeable with and expected to conduct their own independent investigation of the information and the property and to rely only on those results. Sellers reserve the right to accept or reject any and all offers without liability to any buyer or cooperating broker.

Maps are provided for illustration purposes only, the accuracy is not warranted. Parcels on interactive maps are not adjusted to match aerial backgrounds. This information is for reference purposes only and is not a legal document. Data maps contain errors. The seller and seller's agent are making known to all potential buyers that there may be variations between the location of the existing fence lines and the legal description of the deeded property. Seller and seller's agent make no warranties with regard to the location of the fence lines in relationship to the deeded property lines, nor does the Seller make any warranties or representations with regard to the specific acreage contained within the fenced property lines. Seller is selling the property in an "as is" condition, which includes the location of the fences as they exist. Boundaries shown on the accompanying maps are approximate, based on county parcel data. The maps are not to scale. The accuracy of the maps is not guaranteed. Prospective buyers are encouraged to verify fence lines, deeded property lines and acreages using a licensed surveyor at their own expense.



Mossy Oak Properties of Louisiana
2412 E 70th Street
Shreveport, LA 71105
(318) 795-2490
<https://www.mossyoakpropertiesla.com/>

