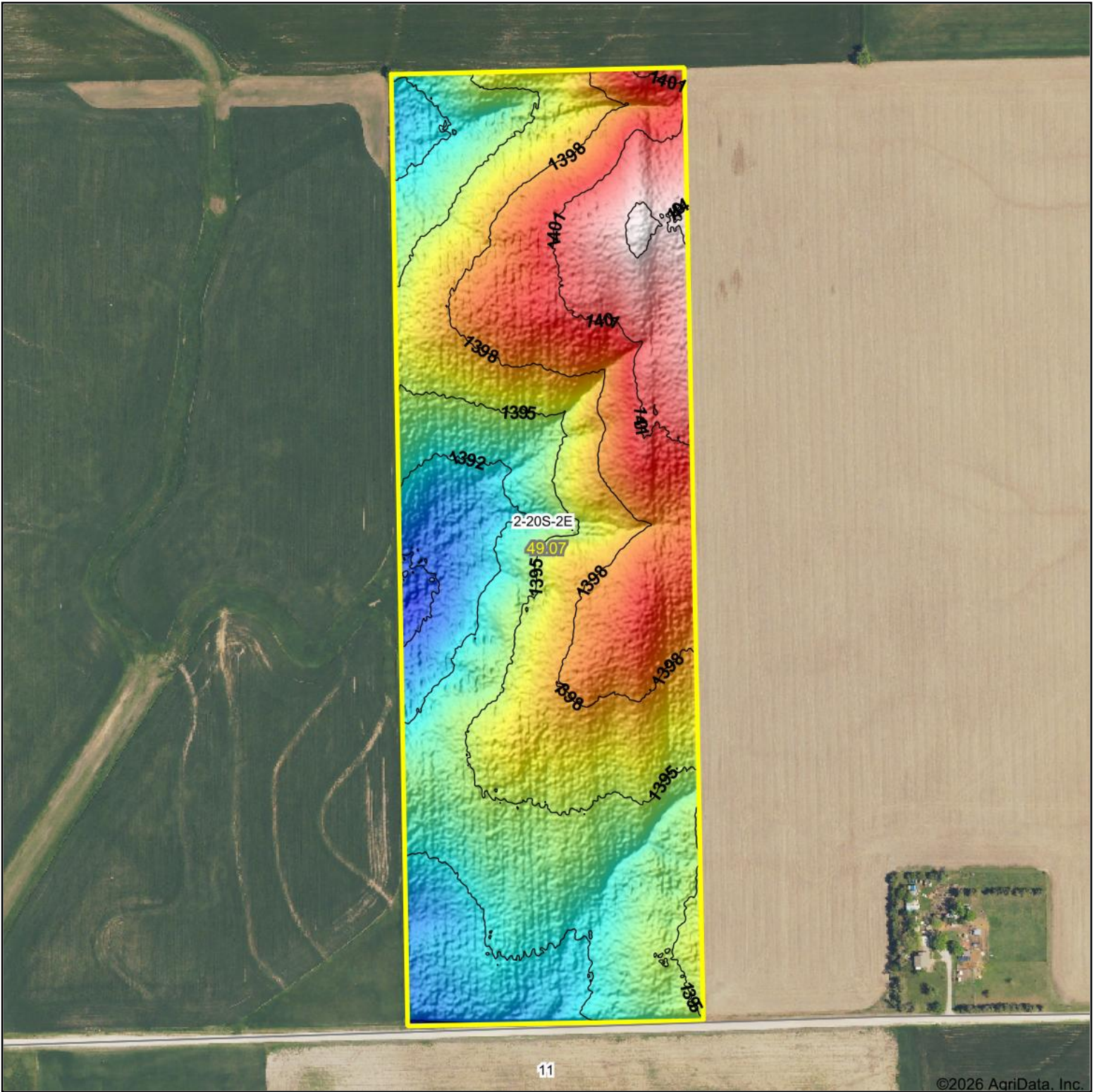


Topography Hillshade



©2026 AgriData, Inc.



RED CEDAR LAND CO.

Maps Provided By:



© AgriData, Inc. 2025

www.AgriDataInc.com

Source: USGS 1 meter dem

Interval(ft): 3

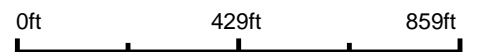
Min: 1,387.8

Max: 1,404.5

Range: 16.7

Average: 1,395.8

Standard Deviation: 3.58 ft



2/23/2026

2-20S-2E
Marion County
Kansas

Boundary Center: 38° 20' 13.59, -97° 10' 53.8