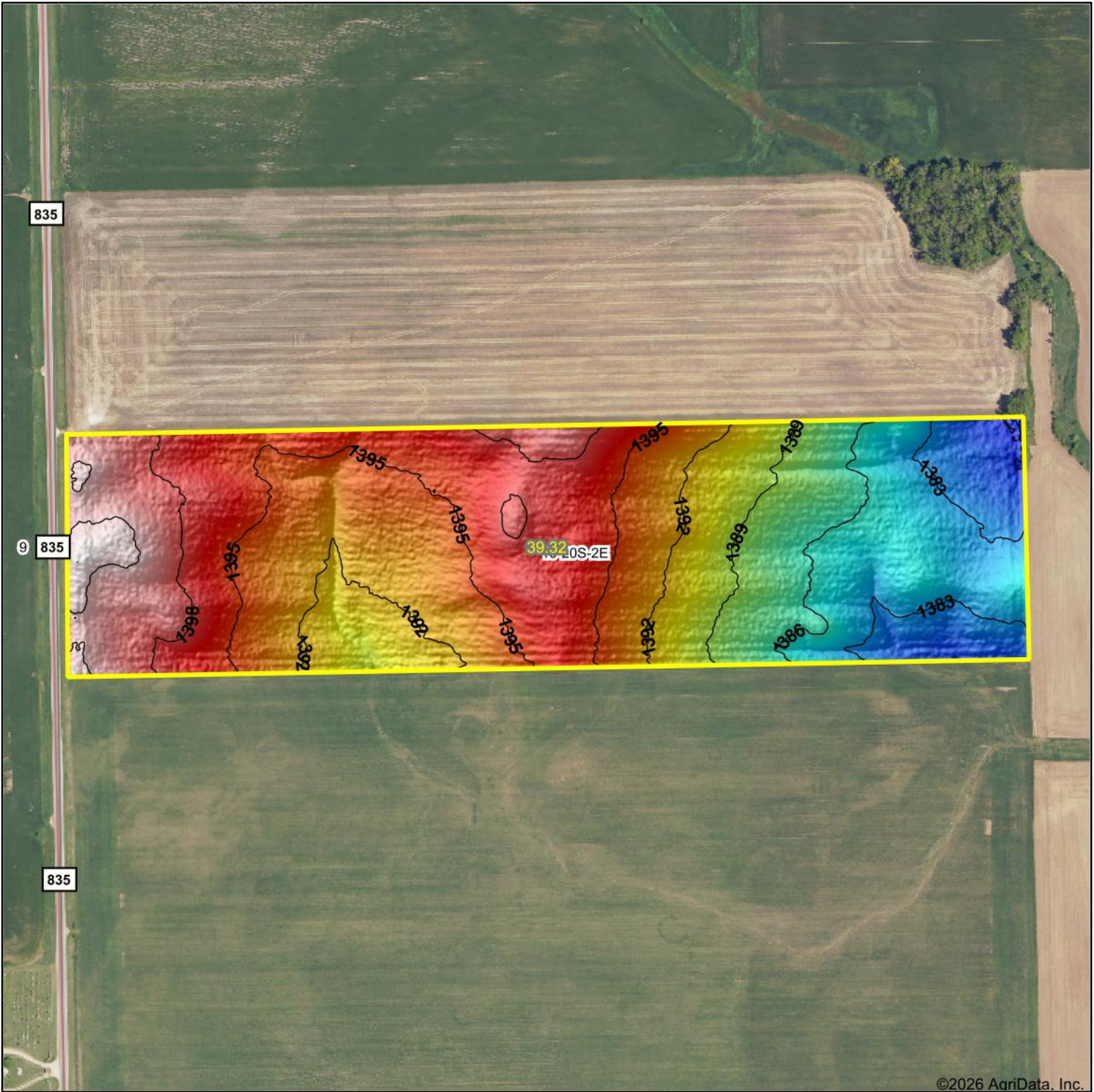


Topography Hillshade



©2026 AgriData, Inc.

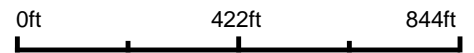


RED CEDAR LAND CO.



© AgriData, Inc. 2025 www.AgriDataInc.com

Source: USGS 1 meter dem
 Interval(ft): 3
 Min: 1,379.5
 Max: 1,402.0
 Range: 22.5
 Average: 1,392.1
 Standard Deviation: 5.54 ft



2/23/2026

10-20S-2E
Marion County
Kansas

Boundary Center: 38° 19' 24.34, -97° 12' 4.98