

MINNESOTA

NOBLES

Form: FSA-156EZ

See Page 2 for non-discriminatory Statements.



United States Department of Agriculture  
Farm Service Agency

Abbreviated 156 Farm Record

FARM : 9972

Prepared : 3/9/22 4:36 PM

Crop Year : 2022

Operator Name : \*

Farms Associated with Operator :

CRP Contract Number(s) : None

Recon ID : 27-105-2022-104

Transferred From : None

ARCPLC G//F Eligibility : Eligible

Farm Land Data

Farmland	Cropland	DCP Cropland	WBP	WRP	CRP	GRP	Sugarcane	Farm Status	Number Of Tracts
70.19	63.90	63.90	0.00	0.00	0.00	0.00	0.00	Active	1
State Conservation	Other Conservation	Effective DCP Cropland	Double Cropped		MPL	Acre Election	EWP	DCP Ag.Rel. Activity	Broken From Native Sod
0.00	0.00	63.90	0.00		0.00		0.00	0.00	0.00

Crop Election Choice

ARC Individual	ARC County	Price Loss Coverage
None	CORN, SOYBN	None

DCP Crop Data

Crop Name	Base Acres	CCC-505 CRP Reduction Acres	PLC Yield	HIP
Corn	32.40	0.00	141	
Soybeans	31.50	0.00	38	
<b>TOTAL</b>	<b>63.90</b>	<b>0.00</b>		

NOTES

Empty box for notes.

Tract Number : 19399

Description : N2 OF NW4 S19/HE

FSA Physical Location : MINNESOTA/NOBLES

ANSI Physical Location : MINNESOTA/NOBLES

BIA Unit Range Number :

HEL Status : NHEL: No agricultural commodity planted on undetermined fields

Wetland Status : Tract contains a wetland or farmed wetland

WL Violations : None

Owners : SUMMIT FARMLAND IV LLP

Other Producers :

Recon ID : None

Tract Land Data

Farm Land	Cropland	DCP Cropland	WBP	WRP	CRP	GRP	Sugarcane
70.19	63.90	63.90	0.00	0.00	0.00	0.00	0.00
State Conservation	Other Conservation	Effective DCP Cropland	Double Cropped	MPL	EWP	DCP Ag. Rel Activity	Broken From Native Sod
0.00	0.00	63.90	0.00	0.00	0.00	0.00	0.00

MINNESOTA  
NOBLES  
Form: FSA-156EZ



FARM : 9972  
Prepared : 3/9/22 4:36 PM  
Crop Year : 2022

Abbreviated 156 Farm Record

DCP Crop Data

Tract 19399 Continued ...

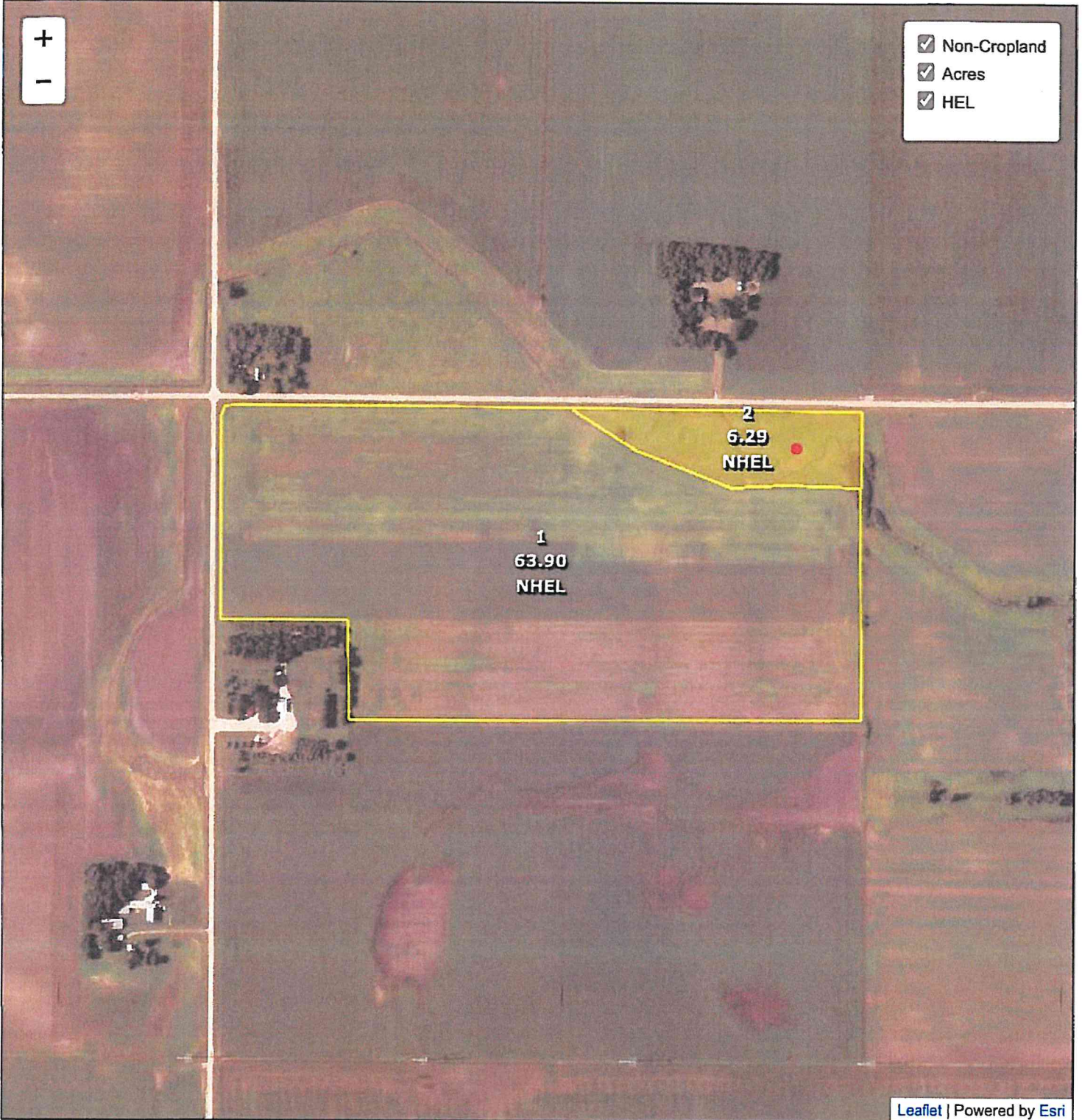
Crop Name	Base Acres	CCC-505 CRP Reduction Acres	PLC Yield
Corn	32.40	0.00	141
Soybeans	31.50	0.00	38
<b>TOTAL</b>	<b>63.90</b>	<b>0.00</b>	

NOTES

In accordance with Federal civil rights law and U.S. Department of Agriculture (USDA) civil rights regulations and policies, the USDA, its Agencies, offices, and employees, and institutions participating in or administering USDA programs are prohibited from discriminating based on race, color, national origin, religion, sex, gender identity (including gender expression), sexual orientation, disability, age, marital status, family/parental status, income derived from a public assistance program, political beliefs, or reprisal or retaliation for prior civil rights activity, in any program or activity conducted or funded by USDA (not all bases apply to all programs). Remedies and complaint filing deadlines vary by program or incident.

Persons with disabilities who require alternative means of communication for program information (e.g., Braille, large print, audiotape, American Sign Language, etc.) should contact the responsible Agency or USDA's TARGET Center at (202) 720-2600 (voice and TTY) or contact USDA through the Federal Relay Service at (800) 877-8339. Additionally, program information may be made available in languages other than English.

To file a program discrimination complaint, complete the USDA Program Discrimination Complaint Form, AD-3027, found online at [http://www.ascr.usda.gov/complaint\\_filing\\_cust.html](http://www.ascr.usda.gov/complaint_filing_cust.html) and at any USDA office or write a letter addressed to USDA and provide in the letter all of the information requested in the form. To request a copy of the complaint form, call (866) 632-9992. Submit your completed form or letter to USDA by: (1) mail: U.S. Department of Agriculture Office of the Assistant Secretary for Civil Rights 1400 Independence Avenue, SW Washington, D.C. 20250-9410; (2) fax: (202) 690-7442; or (3) e-mail: [program.intake@usda.gov](mailto:program.intake@usda.gov). USDA is an equal opportunity provider, employer, and lender.



**Common Land Unit**

- Cropland
- Non-cropland
- CRP

**Farm 9972**  
**Tract 19399**

**Wetland Determination Identifiers**

- Restricted Use
- Limited Restrictions
- Exempt from Conservation Compliance Provisions

**2022 Crop Year**



Tract 1 of 1

United States Department of Agriculture (USDA) Farm Service Agency (FSA) maps are for FSA Program administration only. This map does not represent a legal survey or reflect actual ownership; rather it depicts the information provided directly from the producer and/or National Agricultural Imagery Program (NAIP) imagery. The producer accepts the data 'as is' and assumes all risks associated with its use. USDA-FSA assumes no responsibility for actual or consequential damage incurred as a result of any user's reliance on this data outside FSA Programs. Wetland Identifiers do