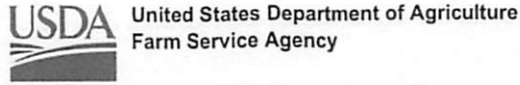


MINNESOTA
LYON
Form: FSA-156EZ



FARM : 12836
Prepared : 8/21/25 10:22 AM CST
Crop Year : 2025

See Page 3 for non-discriminatory Statements.

Abbreviated 156 Farm Record

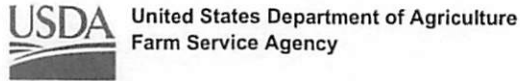
NOTES

Tract Number : 10895
Description : S EXCL BLDG 9 NORDLAND
FSA Physical Location : MINNESOTA/LYON
ANSI Physical Location : MINNESOTA/LYON
BIA Unit Range Number :
HEL Status : NHEL: No agricultural commodity planted on undetermined fields
Wetland Status : Tract does not contain a wetland
WL Violations : None
Owners : SUMMIT FARMLAND IV LLP
Other Producers : None
Recon ID : 27-083-2016-65

Tract Land Data

Farm Land	Cropland	DCP Cropland	WBP	EWP	WRP	GRP	Sugarcane
305.80	296.64	296.64	0.00	0.00	0.00	0.00	0.0

MINNESOTA
LYON
Form: FSA-156EZ



FARM : 12836
Prepared : 8/21/25 10:22 AM CST
Crop Year : 2025

Abbreviated 156 Farm Record

Tract 10895 Continued ...

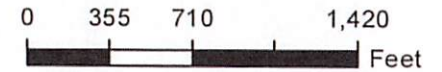
State Conservation	Other Conservation	Effective DCP Cropland	Double Cropped	CRP	MPL	DCP Ag. Rel Activity	SOD
0.00	0.00	296.64	0.00	0.00	0.00	0.00	0.00

DCP Crop Data

Crop Name	Base Acres	CCC-505 CRP Reduction Acres	PLC Yield
Wheat	18.12	0.00	40
Corn	129.25	0.00	143
Soybeans	138.39	0.00	43
TOTAL	285.76	0.00	

NOTES

--



- Unless otherwise noted:
 Shares are 100% operator
 Crops are non-irrigated
 Corn = yellow for grain
 Soybeans = common soybeans for grain
 Wheat = HRS, HRW = Grain
 Sunflower = Oil, Non-Oil = Grain
 Oats and Barley = Spring for grain
 Rye = for grain
 Peas = process
 Alfalfa, Mixed Forage AGM, GMA, IGS = for forage
 Beans = Dry Edible
 NAG = for GZ
 Canola = Spring for seed

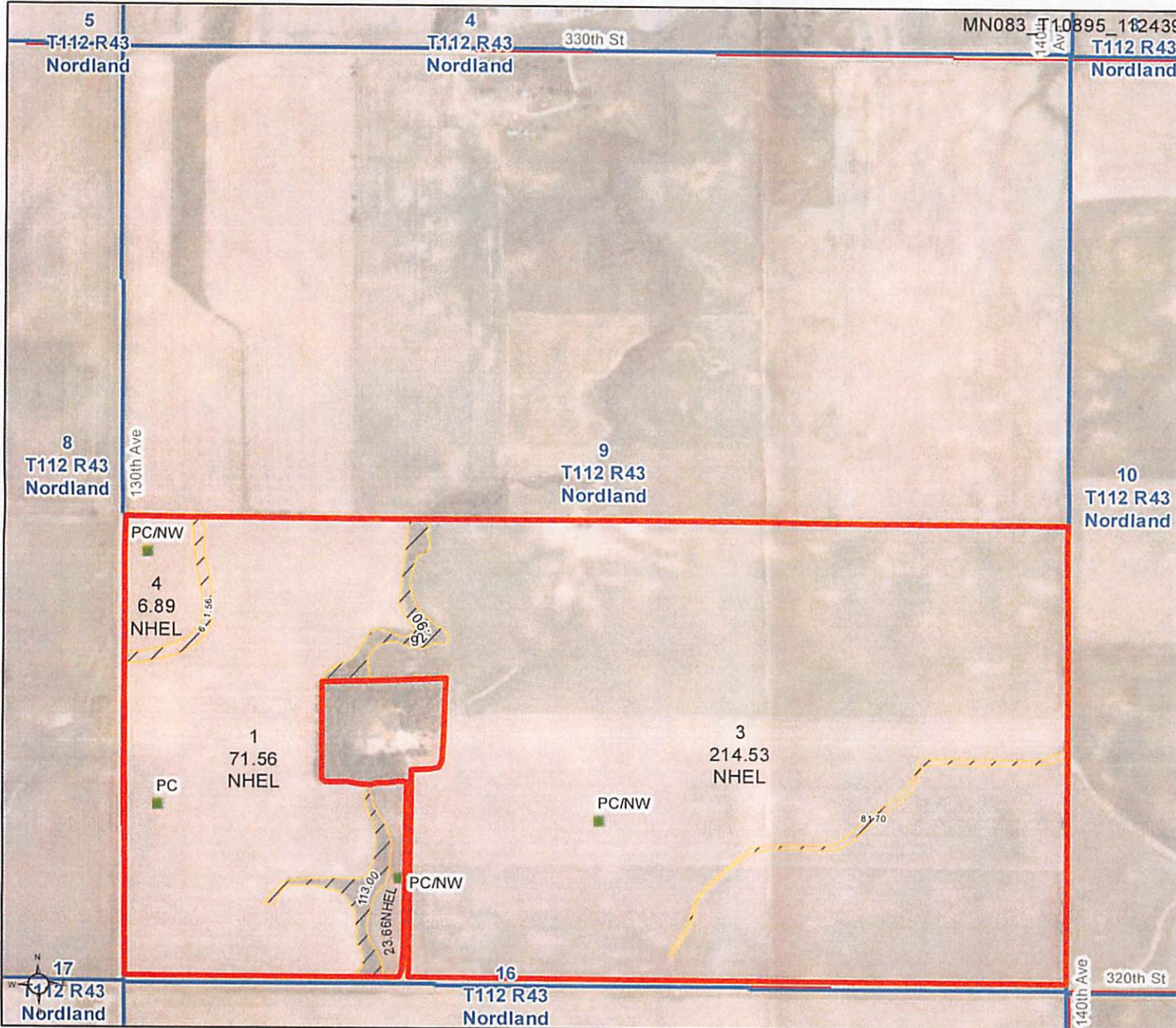
Common Land Unit

- Non-Cropland
- Cropland
- Tract Boundary

Wetland Determination Identifiers

- Restricted Use
- Limited Restrictions
- Exempt from Conservation Compliance Provisions

Tract Cropland Total: 296.64 acres



United States Department of Agriculture (USDA) Farm Service Agency (FSA) maps are for FSA Program administration only. This map does not represent a legal survey or reflect actual ownership; rather it depicts the information provided directly from the producer and/or National Agricultural Imagery Program (NAIP) imagery. The producer accepts the data 'as is' and assumes all risks associated with its use. USDA-FSA assumes no responsibility for actual or consequential damage incurred as a result of any user's reliance on this data outside FSA Programs. Wetland identifiers do not represent the size, shape, or specific determination of the area. Refer to your original determination (CPA-026 and attached maps) for exact boundaries and determinations or contact USDA Natural Resources Conservation Service (NRCS). This map displays the 2023 NAIP imagery.