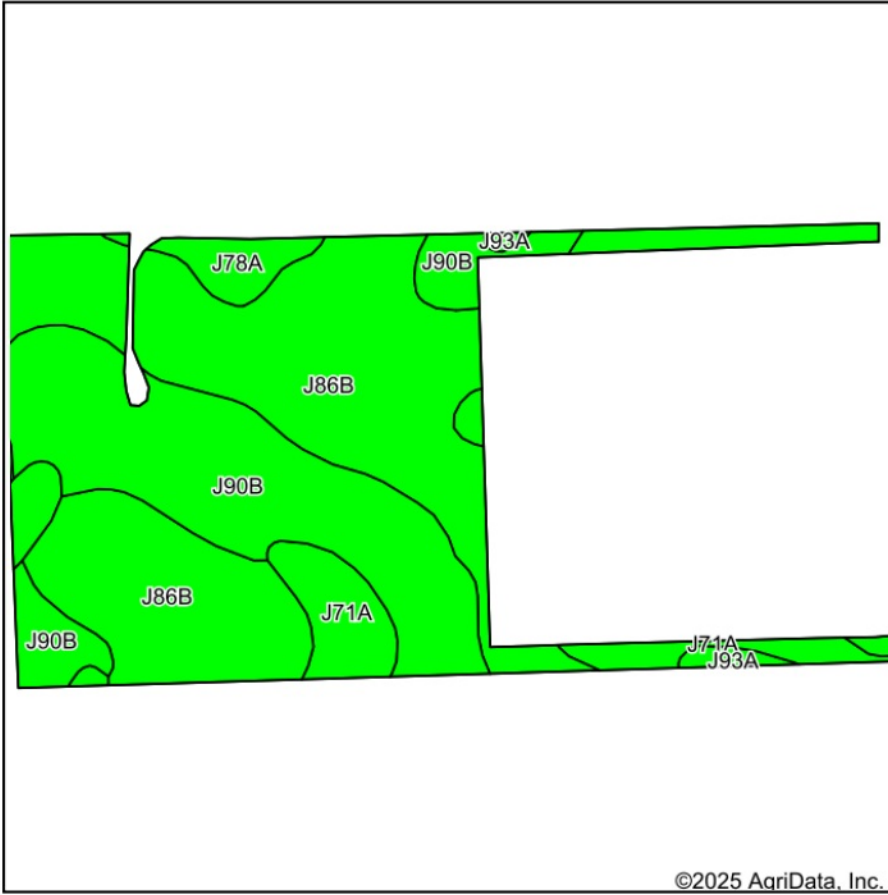
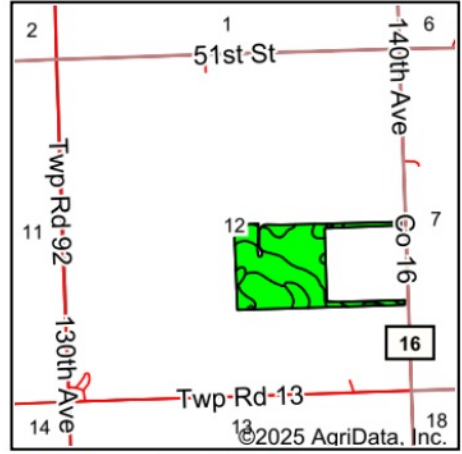


Soils Map



Soils data provided by USDA and NRCS.



State: **Minnesota**
 County: **Pipestone**
 Location: **12-105N-45W**
 Township: **Elmer**
 Acres: **45.33**
 Date: **5/13/2025**

Maps Provided By:

 CUSTOMIZED ONLINE MAPPING
 © AgriData, Inc. 2023 www.AgriDataInc.com



Area Symbol: MN117, Soil Area Version: 24

Code	Soil Description	Acres	Percent of field	PI Legend	Non-Irr Class *c	Productivity Index
J86B	Vienna silty clay loam, 3 to 6 percent slopes	24.25	53.5%		Ile	90
J90B	Kranzburg-Brookings silty clay loams, 1 to 6 percent slopes	14.87	32.8%		Ile	93
J71A	Brookings silty clay loam, 0 to 2 percent slopes	4.40	9.7%		Iw	98
J78A	Lismore silty clay loam, 1 to 3 percent slopes	1.33	2.9%		Ie	98
J93A	Hidewood-Badger complex, 0 to 2 percent slopes	0.48	1.1%		Iiw	92
Weighted Average					1.87	92

*c: Using Capabilities Class Dominant Condition Aggregation Method