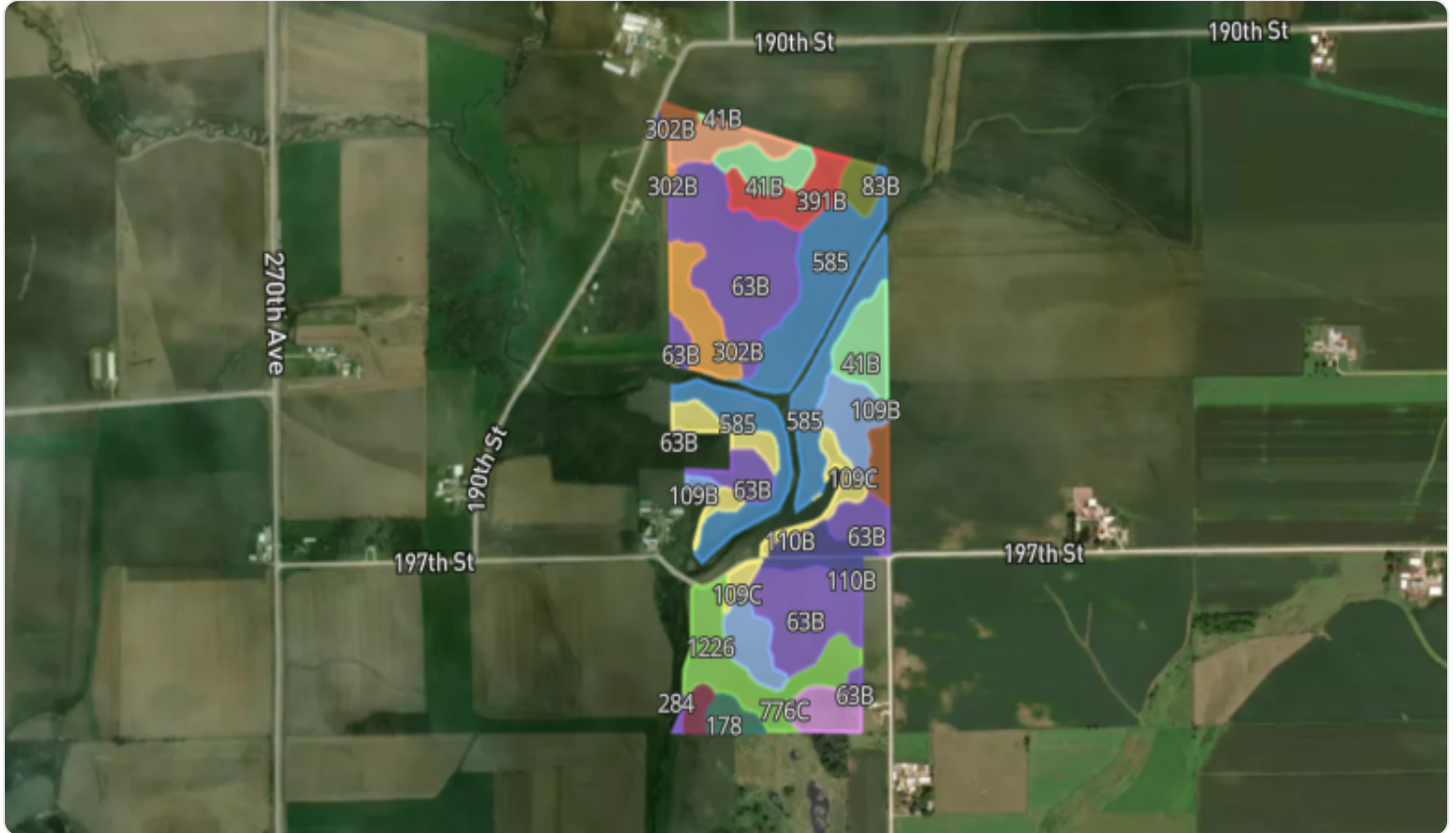


Soil Map



Soil Code	Soil Description	% of Map	Acres	CSR2
63B	Chelsea loamy fine sand, 2 to 5 percent slopes	27.93%	46.08	19
585	Coland-Spillville complex, 0 to 2 percent slopes, occasionally flooded	20.54%	33.88	70
1226	Lawler loam, 0 to 2 percent slopes, rarely flooded	8.17%	13.48	59
109B	Backbone fine sandy loam, 2 to 5 percent slopes	7.46%	12.30	36
41B	Sparta loamy sand, 2 to 5 percent slopes	6.88%	11.35	42
109C	Backbone fine sandy loam, 5 to 9 percent slopes	5.66%	9.33	31
302B	Coggon loam, 2 to 5 percent slopes	4.55%	7.50	76
391B	Clyde-Floyd complex, 1 to 4 percent slopes	4.28%	7.06	87
907B	Schley loam, sandy substratum, 2 to 5 percent slopes	2.81%	4.63	64
	7 other soils	11.71%	19.32	31
Total			164.93	46.6

All data courtesy SSURGO database distributed by the U.S. NRCS.

Soil Capability Classes Irrigated










Capability Class	% of Map	Acres
 N/A	93.11%	153.58
 2e	6.88%	11.35
Total		164.93

All data courtesy SSURGO database distributed by the U.S. NRCS.

Soil Capability Classes Non-Irrigated



Capability Class	% of Map	Acres
 4s	50.65%	83.55
 2w	27.63%	45.57
 2s	9.70%	16.01
 2e	8.14%	13.42
 3e	2.71%	4.47
 3s	1.02%	1.68
 5w	0.14%	0.23
Total		164.93

All data courtesy SSURGO database distributed by the U.S. NRCS.