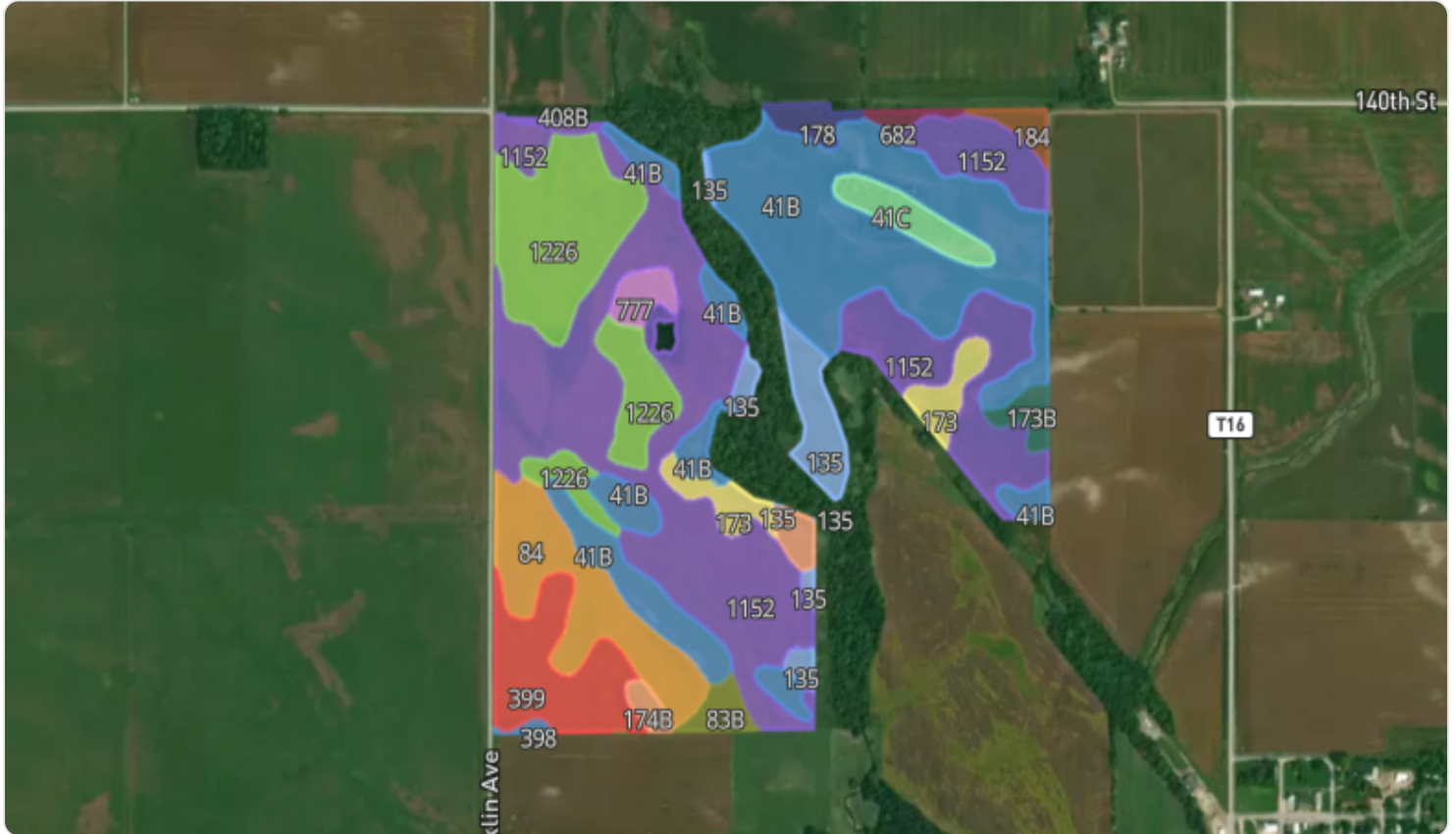


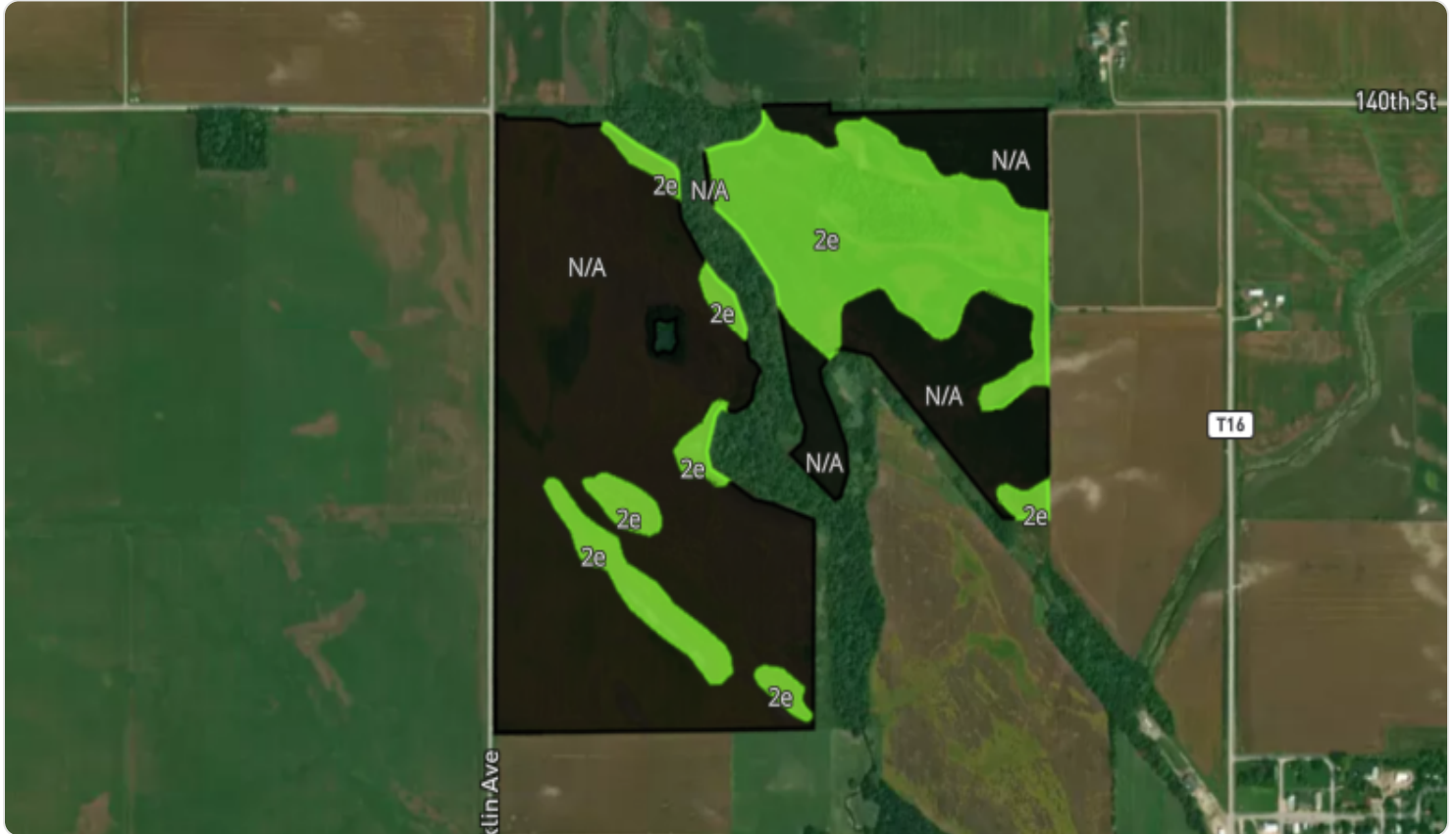
Soil Map





Soil Code	Soil Description	% of Map	Acres	CSR2
1152	Marshan clay loam, 0 to 2 percent slopes, rarely flooded	33.76%	89.15	54
41B	Sparta loamy sand, 2 to 5 percent slopes	26.07%	68.85	42
1226	Lawler loam, 0 to 2 percent slopes, rarely flooded	11.93%	31.49	59
84	Clyde silty clay loam, 0 to 3 percent slopes	7.21%	19.03	88
399	Readlyn silt loam, 1 to 3 percent slopes	5.69%	15.04	91
135	Coland clay loam, 0 to 2 percent slopes, occasionally flooded	3.44%	9.10	65
173	Hoopeston fine sandy loam, 0 to 2 percent slopes	2.83%	7.48	59
41C	Sparta loamy sand, 5 to 9 percent slopes	2.12%	5.60	37
174B	Bolan loam, 2 to 5 percent slopes	1.31%	3.46	64
	8 other soils	5.64%	14.92	82
Total			264.12	57.2

All data courtesy SSURGO database distributed by the U.S. NRCS.

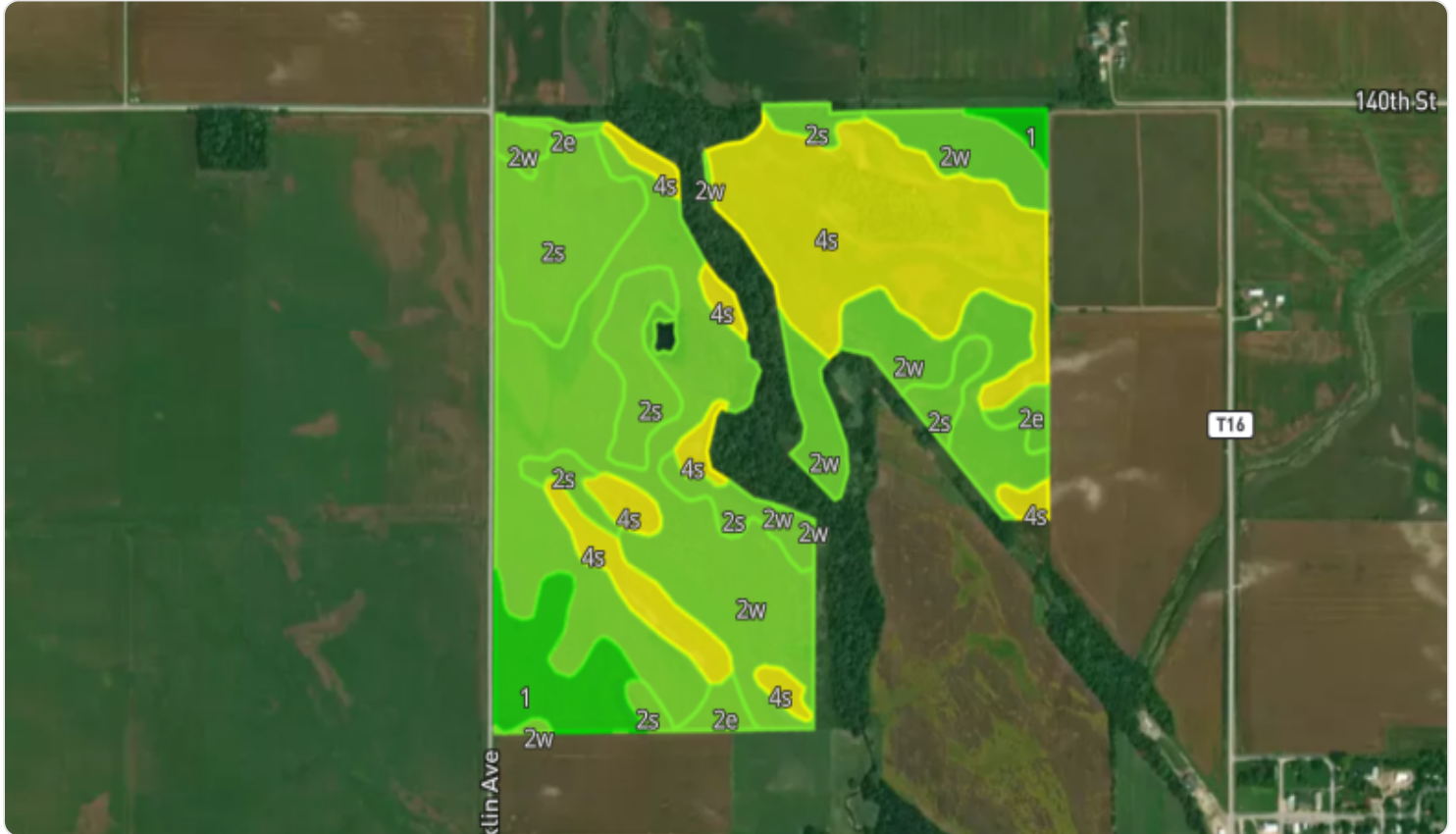
Soil Capability Classes Irrigated








Capability Class	% of Map	Acres
 N/A	71.81%	189.67
 2e	28.19%	74.45
Total		264.12

All data courtesy SSURGO database distributed by the U.S. NRCS.

Soil Capability Classes Non-Irrigated



Capability Class	% of Map	Acres
 2w	45.05%	118.97
 4s	28.19%	74.45
 2s	18.22%	48.12
 1	6.39%	16.90
 2e	2.15%	5.68
Total		264.12

All data courtesy SSURGO database distributed by the U.S. NRCS.