

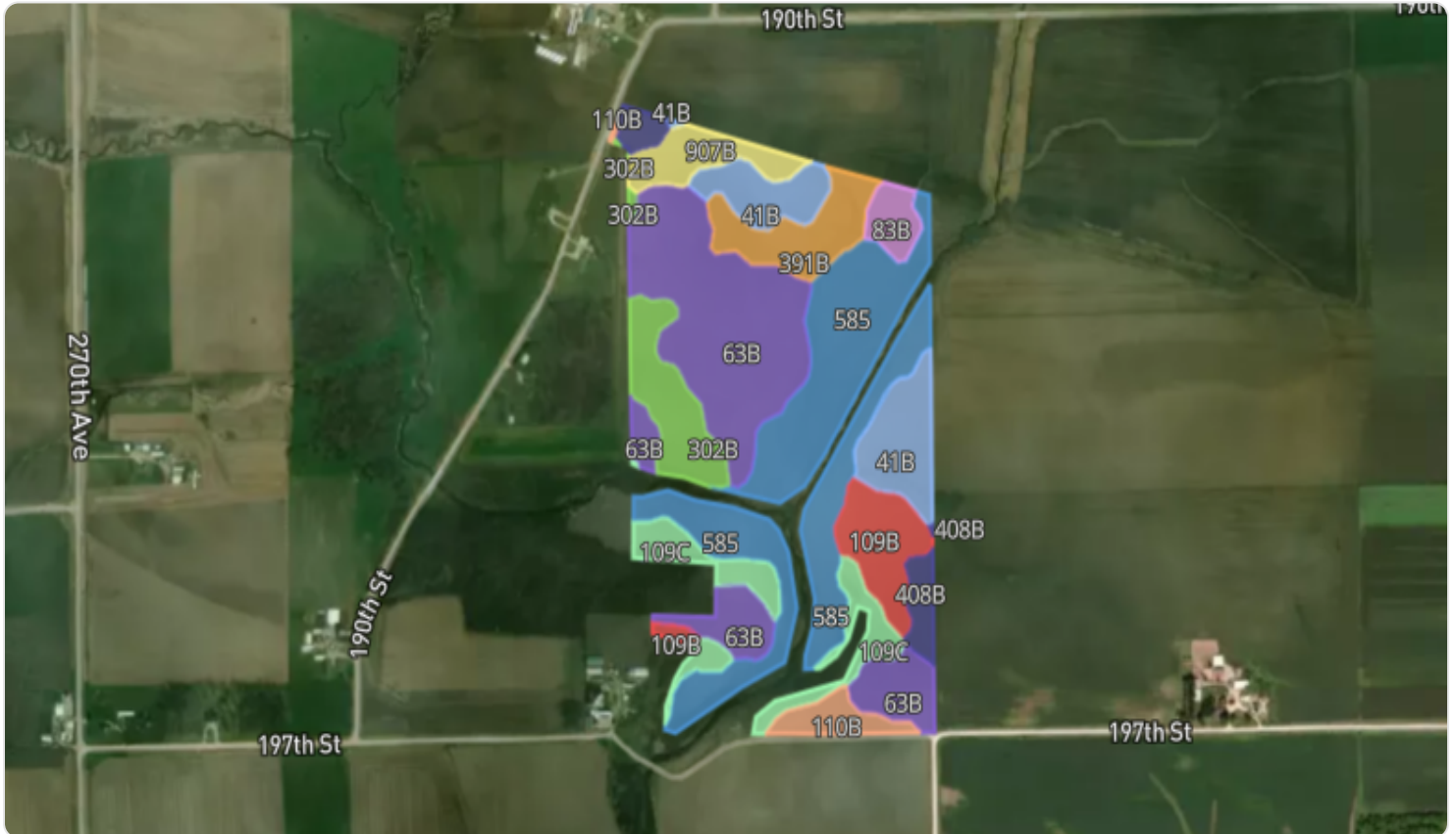
# Delaware-ES-120 Farm

Delaware County, Iowa | 24 89N 4W | 135.41 gross acres

42.50859, -91.25636



## Soil Map





Soil Code	Soil Description	% of Map	Acres	CSR2
585	Coland-Spillville complex, 0 to 2 percent slopes, occasionally flooded	27.31%	32.87	70
63B	Chelsea loamy fine sand, 2 to 5 percent slopes	26.84%	32.31	19
41B	Sparta loamy sand, 2 to 5 percent slopes	9.51%	11.45	42
109C	Backbone fine sandy loam, 5 to 9 percent slopes	7.03%	8.46	31
302B	Coggon loam, 2 to 5 percent slopes	6.19%	7.45	76
391B	Clyde-Floyd complex, 1 to 4 percent slopes	5.92%	7.13	87
109B	Backbone fine sandy loam, 2 to 5 percent slopes	5.90%	7.10	36
907B	Schley loam, sandy substratum, 2 to 5 percent slopes	3.92%	4.72	64
110B	Lamont fine sandy loam, 2 to 5 percent slopes	2.42%	2.91	52
	2 other soils	4.97%	5.97	64
<b>Total</b>			<b>120.37</b>	<b>None</b>

All data courtesy SSURGO database distributed by the U.S. NRCS.

## Soil Capability Classes Irrigated

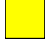





Capability Class	% of Map	Acres
 N/A	90.50%	108.92
 2e	9.51%	11.45
<b>Total</b>		<b>120.37</b>

All data courtesy SSURGO database distributed by the U.S. NRCS.

## Soil Capability Classes Non-Irrigated



Capability Class	% of Map	Acres
 4s	49.28%	59.32
 2w	37.15%	44.72
 2e	11.16%	13.42
 3e	2.42%	2.91
<b>Total</b>		<b>120.37</b>

All data courtesy SSURGO database distributed by the U.S. NRCS.