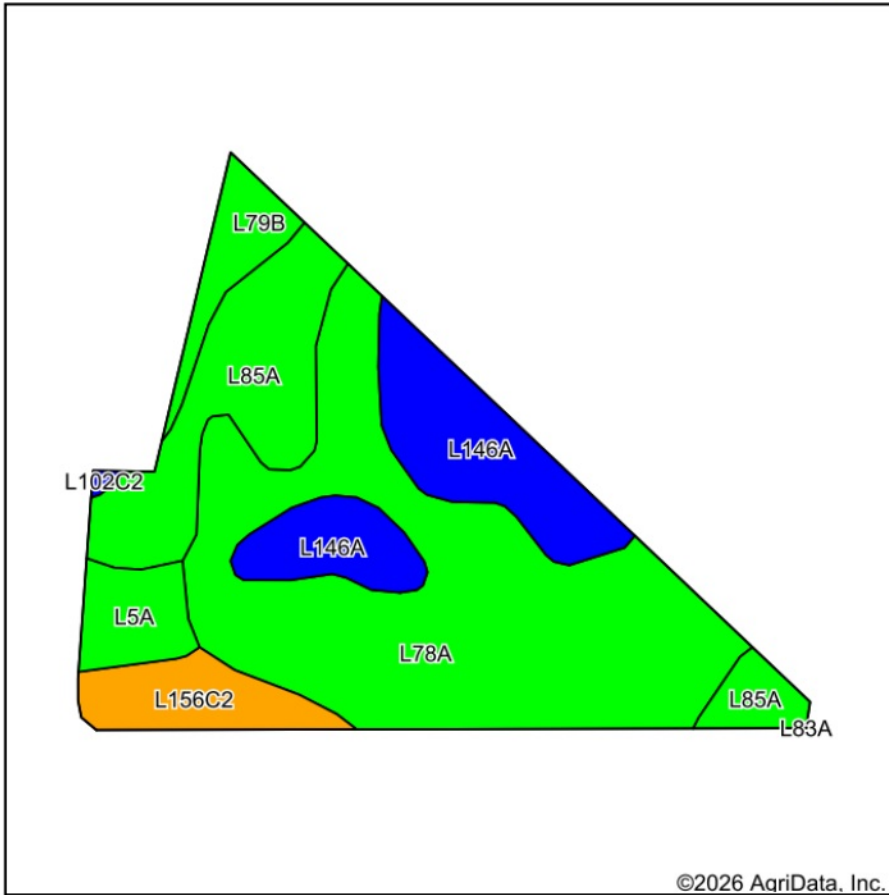
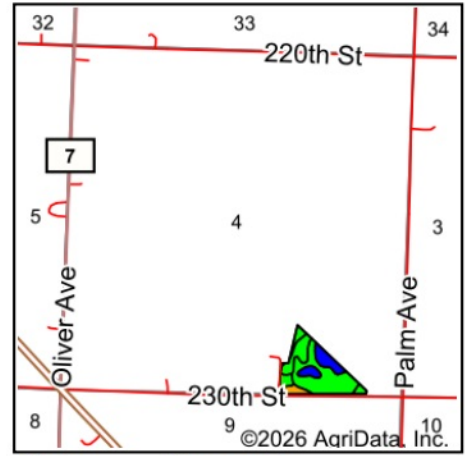


Soils Map



Soils data provided by USDA and NRCS.









State: **Minnesota**
 County: **Nobles**
 Location: **4-102N-40W**
 Township: **Worthington**
 Acres: **17.87**
 Date: **6/15/2026**

Maps Provided By

 CUSTOMIZED ONLINE MAPPING
 © AgriData, Inc. 2025 www.AgriDataInc.com



Area Symbol: MN105, Soil Area Version: 24

Code	Soil Description	Acres	Percent of field	PI Legend	Non-Irr Class *c	Productivity Index
L78A	Canisteo clay loam, 0 to 2 percent slopes	8.82	49.4%		IIw	93
L85A	Nicollet clay loam, 1 to 3 percent slopes	3.17	17.7%		Iw	99
L146A	Glencoe silty clay loam, 0 to 1 percent slopes	3.11	17.4%		IIIw	86
L156C2	Clarion-Storden-Pilot Grove complex, 6 to 10 percent slopes, moderately eroded	1.16	6.5%		IIIe	73
L5A	Delft, overwash-Delft complex, 1 to 4 percent slopes	0.83	4.6%		IIw	96
L79B	Clarion loam, 2 to 6 percent slopes	0.78	4.4%		Ile	95
Weighted Average					2.06	91.8

*c: Using Capabilities Class Dominant Condition Aggregation Method