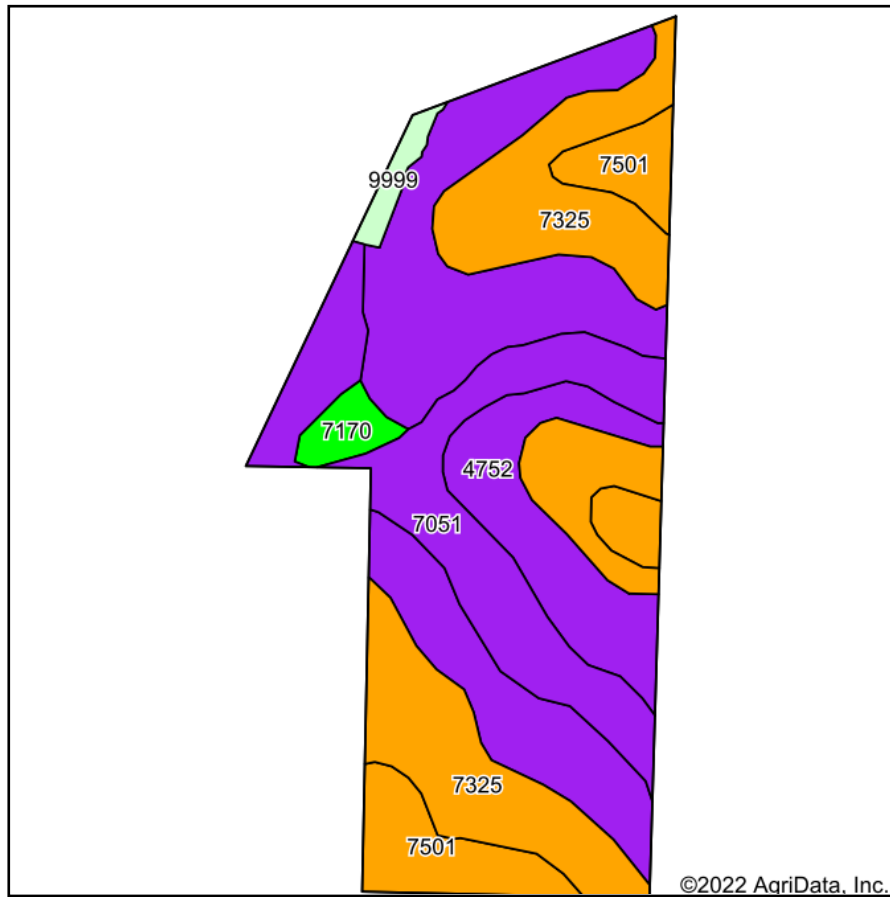
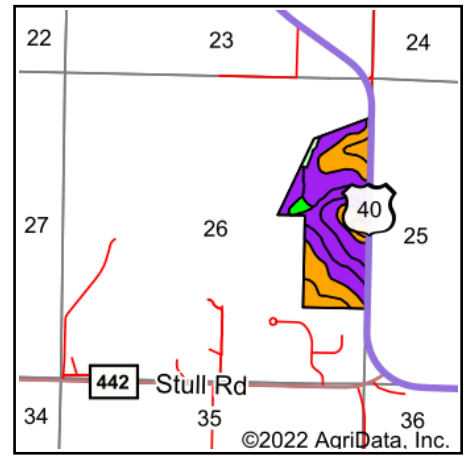


Soils Map



Soils data provided by USDA and NRCS.



State: **Kansas**
 County: **Douglas**
 Location: **26-12S-18E**
 Township: **Kanwaka**
 Acres: **82.88**
 Date: **4/13/2022**



Maps Provided By:



© AgriData, Inc. 2021

www.AgriDataInc.com



Area Symbol: KS045, Soil Area Version: 18

Code	Soil Description	Acres	Percent of field	Non-Irr Class Legend	Non-Irr Class *c	Irr Class *c	*n NCCPI Overall	*n NCCPI Corn	*n NCCPI Small Grains	*n NCCPI Soybeans	*n NCCPI Cotton
4752	Sogn-Vinland complex, 3 to 25 percent slopes	32.76	39.5%		Vls		32	30	31	23	
7325	Martin-Oska silty clay loams, 3 to 6 percent slopes	22.87	27.6%		Ille		53	51	53	46	
7051	Kennebec silt loam, frequently flooded	15.82	19.1%		Vw		78	78	63	64	19
7501	Pawnee clay loam, 4 to 8 percent slopes, eroded	8.64	10.4%		Ille		43	39	42	40	
7170	Reading silt loam, rarely flooded	1.66	2.0%		Iw	Iw	89	89	73	77	8
9999	Water	1.13	1.4%								
Weighted Average					4.49	0.02	*n 48.4	*n 46.7	*n 44.7	*n 39.7	*n 3.8

*n: The aggregation method is "Weighted Average using all components"

*c: Using Capabilities Class Dominant Condition Aggregation Method

Soils data provided by USDA and NRCS.