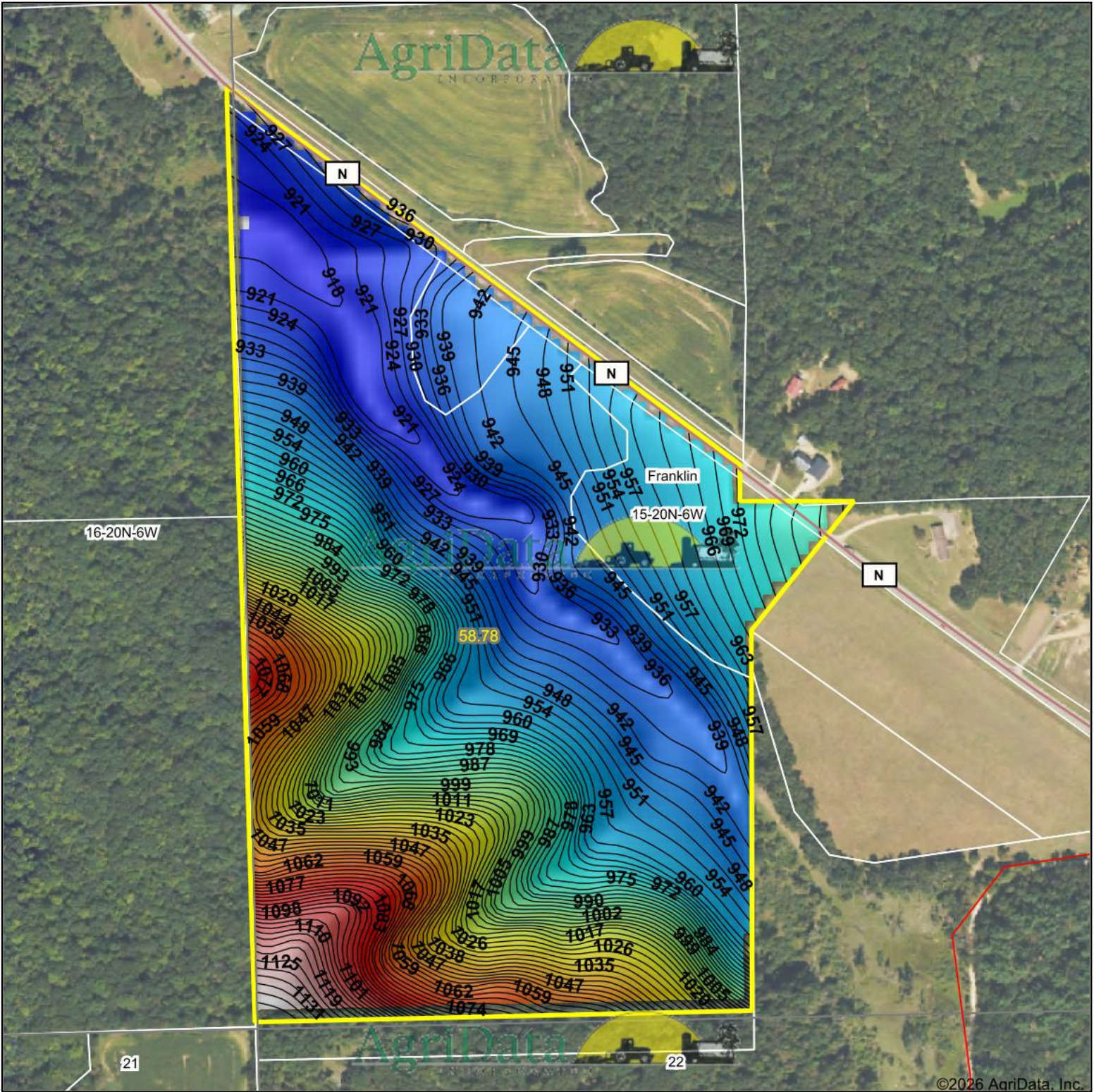


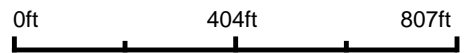
Topography Hillshade



©2026 AgriData, Inc.



Source: USGS 10 meter dem
 Interval(ft): 3
 Min: 915.9
 Max: 1,139.6
 Range: 223.7
 Average: 977.0
 Standard Deviation: 49.64 ft



15-20N-6W
Jackson County
Wisconsin

Boundary Center: 44° 12' 18.33, -91° 5' 25.4

Maps Provided By:



© AgriData, Inc. 2025 www.AgriDataInc.com

Field borders provided by Farm Service Agency as of 5/21/2008.