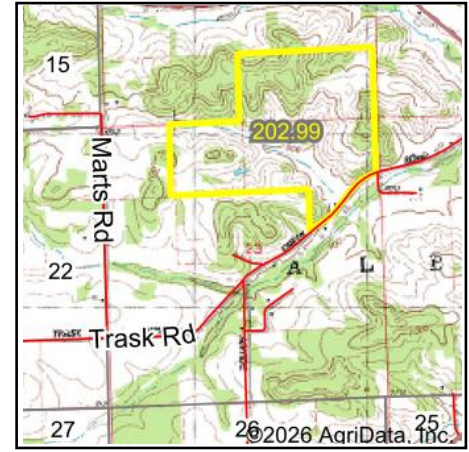
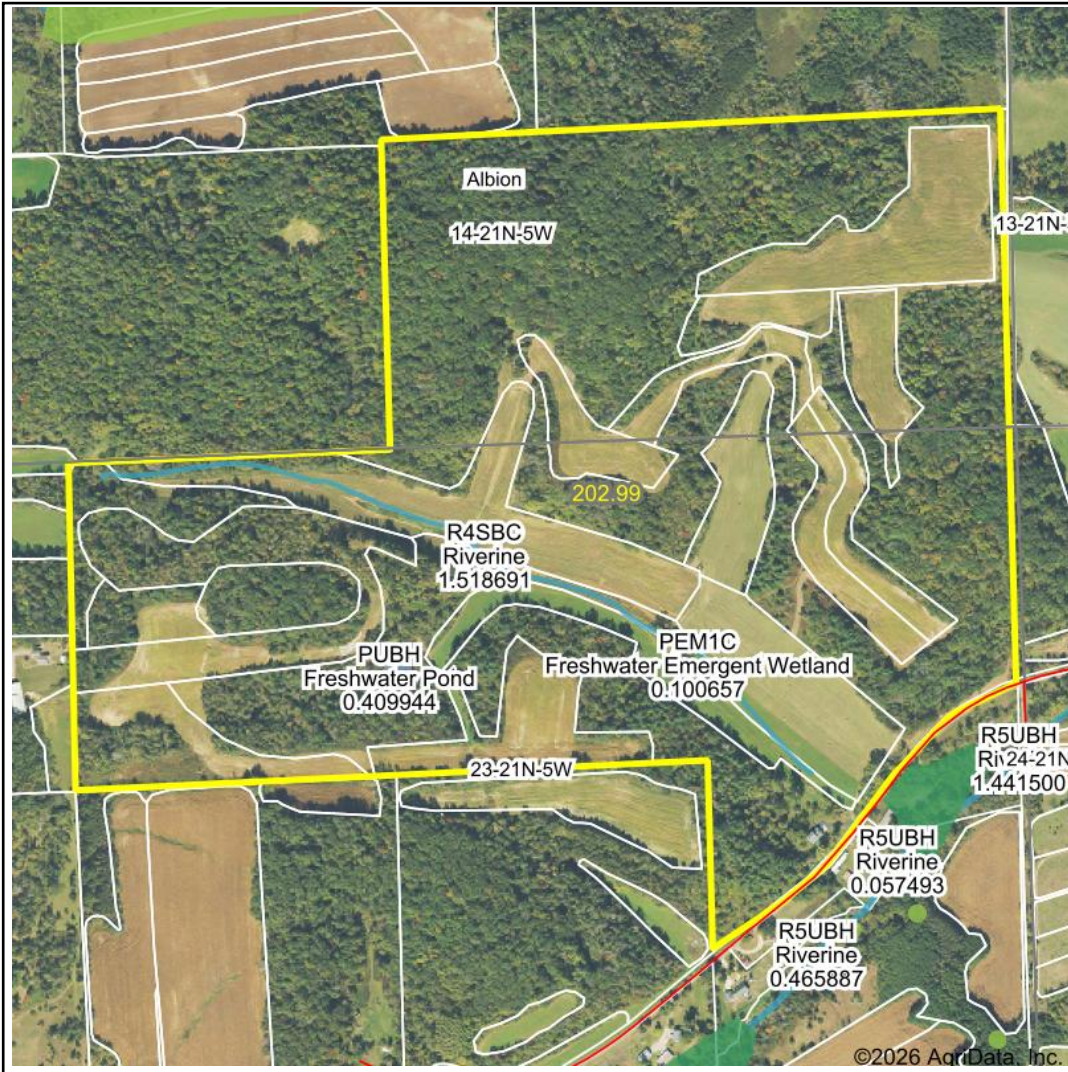


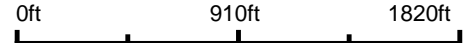
Wetlands Map



State: Wisconsin
Location: 23-21N-5W
County: Jackson
Township: Albion
Date: 6/4/2026

Maps Provided By:

 CUSTOMIZED ONLINE MAPPING
 © AgriData, Inc. 2025 www.AgriDataInc.com



Classification Code	Type	Acres
R4SBC	Riverine	1.52
PUBH	Freshwater Pond	0.41
PEM1C	Freshwater Emergent Wetland	0.10
Total Acres		2.03

Data Source: National Wetlands Inventory website. U.S. DoI, Fish and Wildlife Service, Washington, D.C. <http://www.fws.gov/wetlands/>