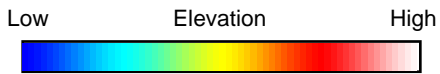
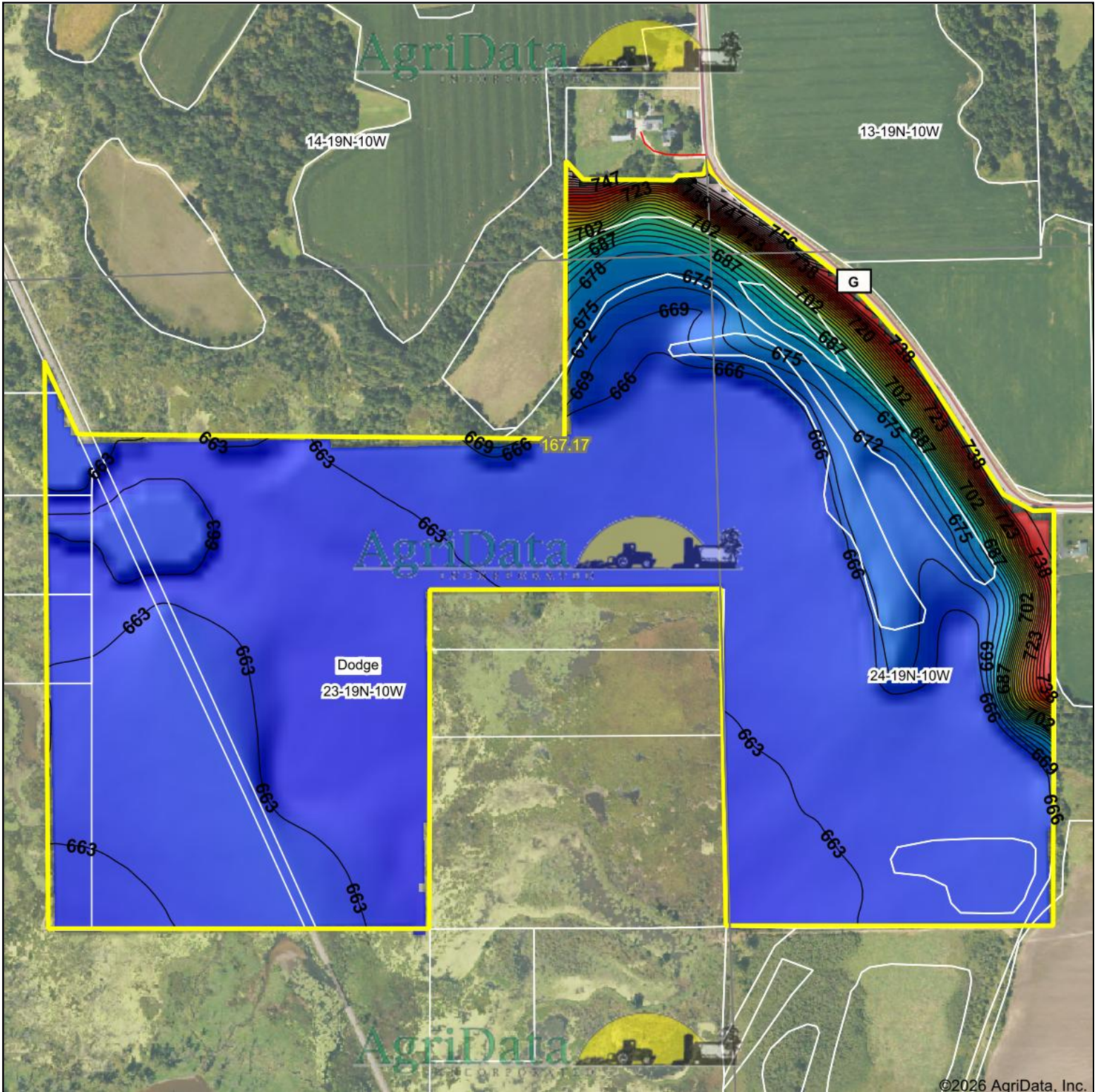
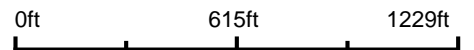


# Topography Hillshade



Source: USGS 10 meter dem  
 Interval(ft): 3  
 Min: 660.9  
 Max: 763.8  
 Range: 102.9  
 Average: 669.5  
 Standard Deviation: 16.44 ft



**23-19N-10W**  
**Trempealeau County**  
**Wisconsin**

Boundary Center: 44° 6' 35.75, -91° 32' 2.61



Field borders provided by Farm Service Agency as of 5/21/2008.