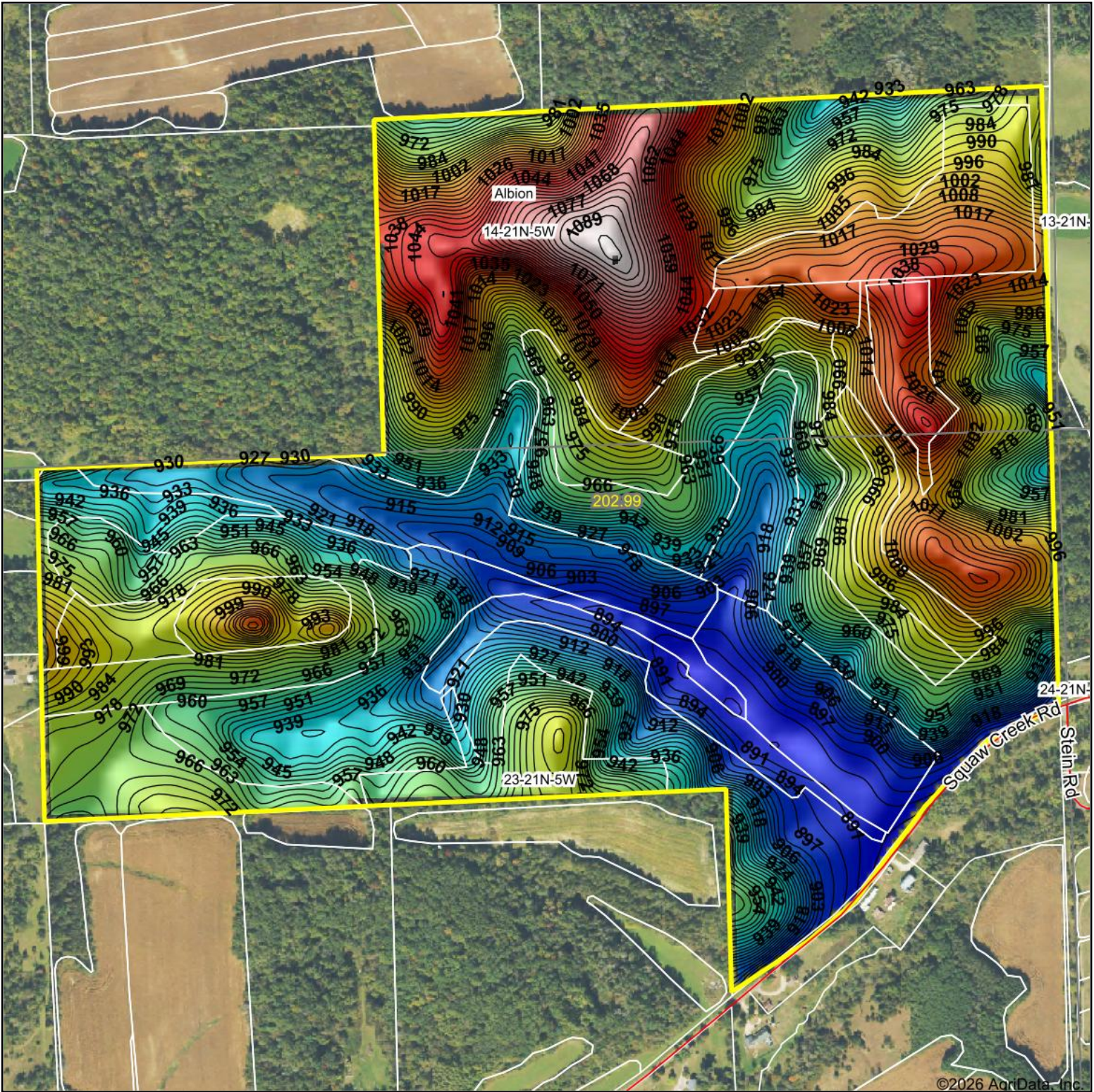
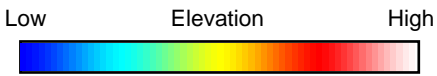


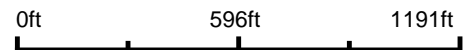
Topography Hillshade



©2026 AgriData, Inc.



Source: USGS 10 meter dem



Interval(ft): 3
 Min: 887.0
 Max: 1,093.7
 Range: 206.7
 Average: 970.2
 Standard Deviation: 45.9 ft



23-21N-5W
Jackson County
Wisconsin

Boundary Center: 44° 17' 25.57, -90° 57' 4.76



Maps Provided By:



© AgriData, Inc. 2025 www.AgriDataInc.com

Field borders provided by Farm Service Agency as of 5/21/2008.