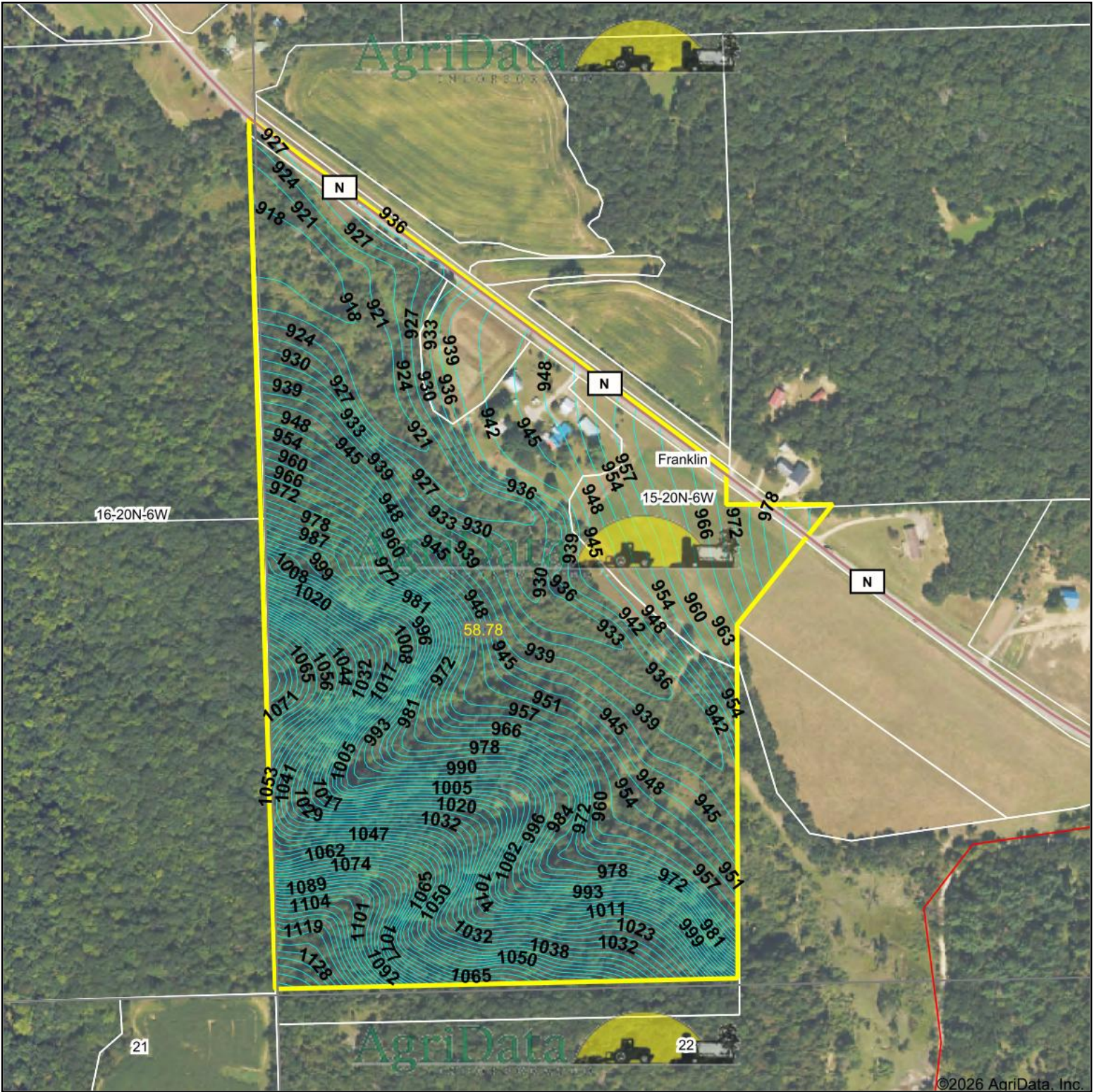


Topography Contours



©2026 AgriData, Inc.

Source: USGS 10 meter dem

Interval(ft): 3.0

Min: 915.9

Max: 1,139.6

Range: 223.7

Average: 977.0

Standard Deviation: 49.64 ft

0ft 434ft 868ft



5/18/2026

15-20N-6W
Jackson County
Wisconsin

Boundary Center: 44° 12' 18.33, -91° 5' 25.4

Maps Provided By:



© AgriData, Inc. 2025 www.AgriDataInc.com

Field borders provided by Farm Service Agency as of 5/21/2008.