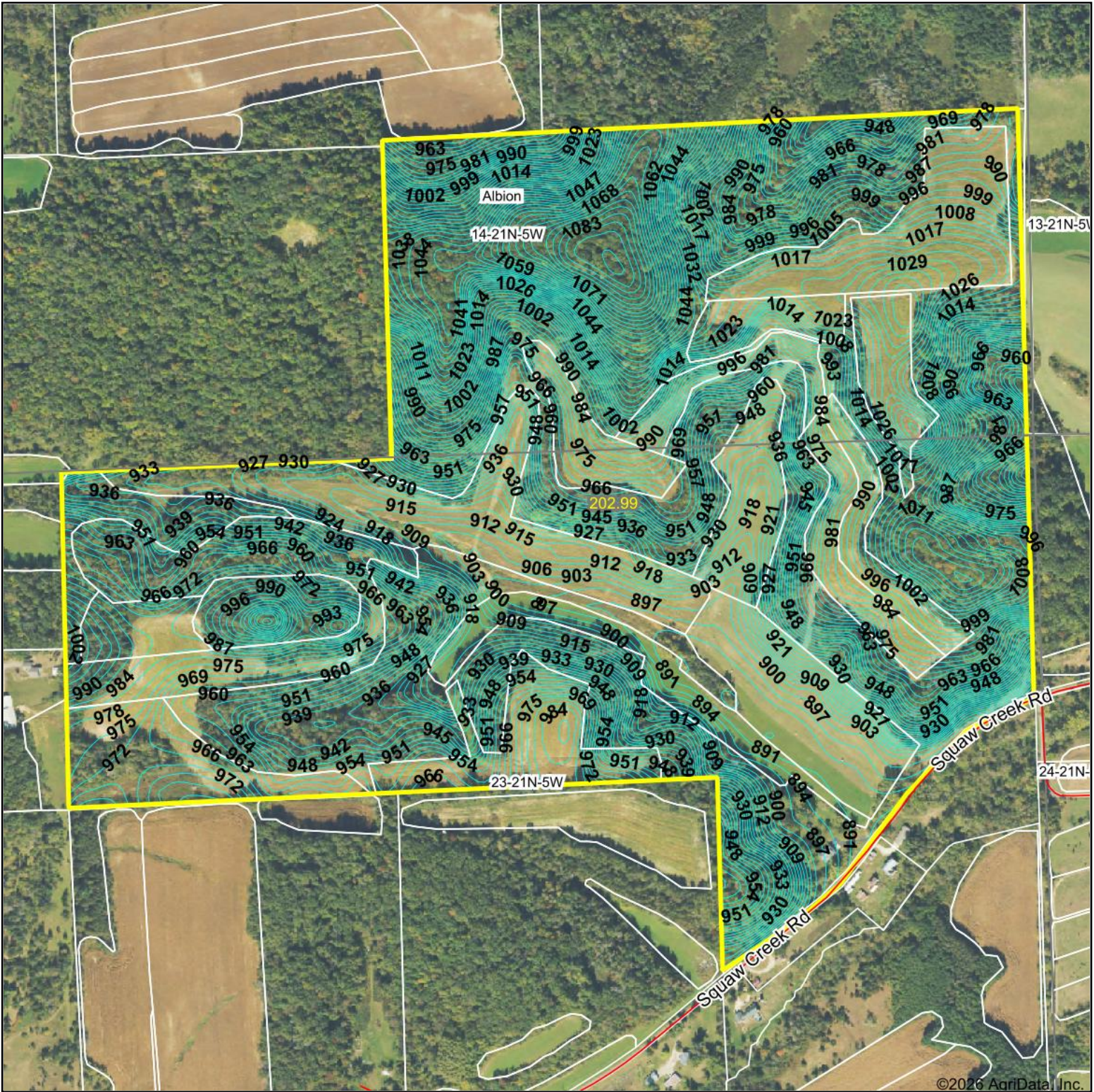


Topography Contours



©2026 AgriData, Inc.

Source: USGS 10 meter dem

Interval(ft): 3.0

Min: 887.0

Max: 1,093.7

Range: 206.7

Average: 970.2

Standard Deviation: 45.9 ft

0ft 626ft 1252ft



6/4/2026

23-21N-5W
Jackson County
Wisconsin

Boundary Center: 44° 17' 25.57, -90° 57' 4.76

Maps Provided By:



© AgriData, Inc. 2025 www.AgriDataInc.com

Field borders provided by Farm Service Agency as of 5/21/2008.