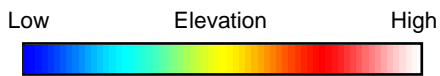
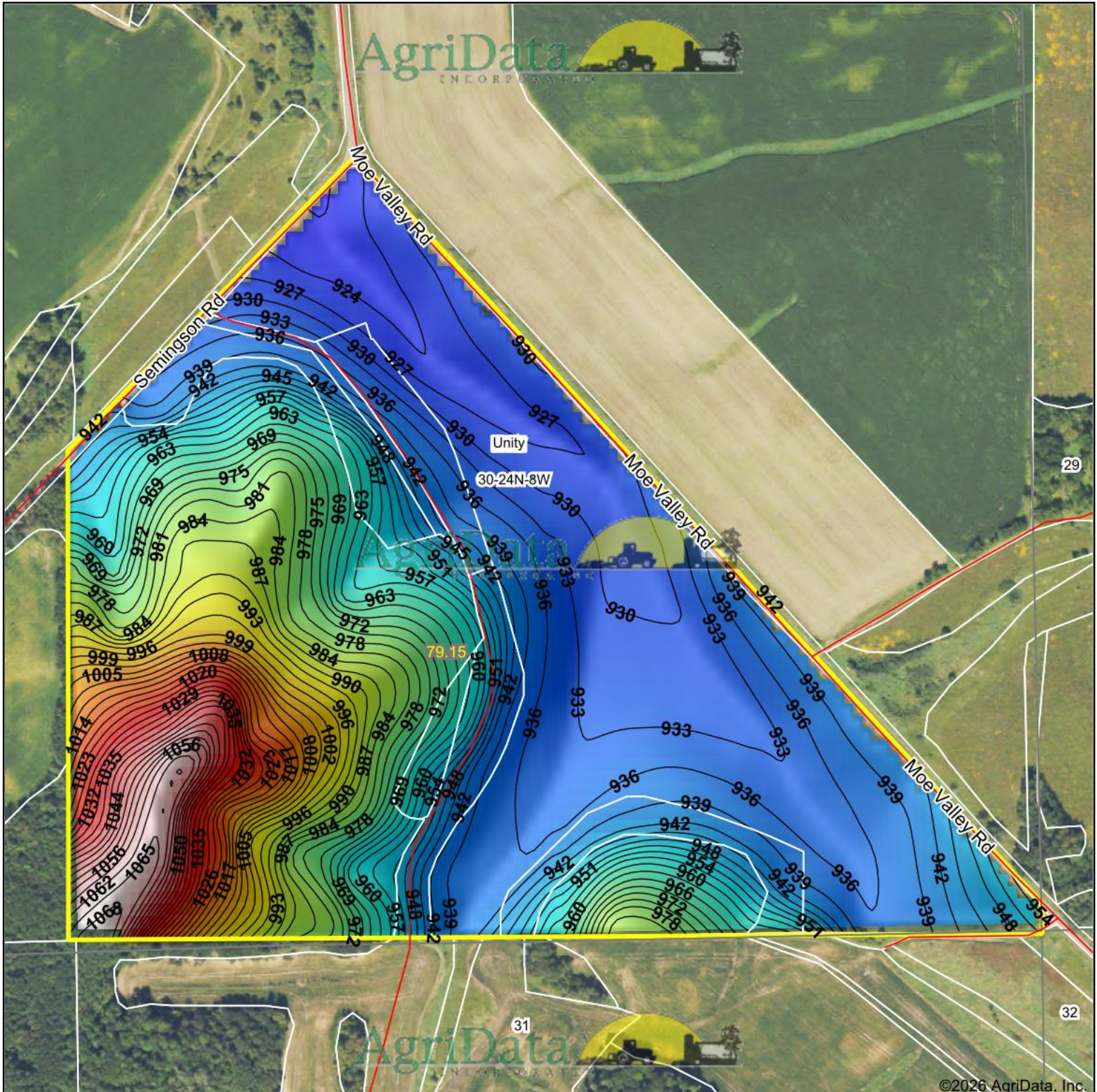


# Topography Hillshade



Source: USGS 10 meter dem

Interval(ft): 3

Min: 920.8

Max: 1,070.5

Range: 149.7

Average: 960.9

Standard Deviation: 35.01 ft



5/4/2026

**30-24N-8W**  
Trempealeau County  
Wisconsin

Boundary Center: 44° 31' 36.35, -91° 23' 33.11

Maps Provided By:



© AgriData, Inc. 2025 www.AgriDataInc.com

Field borders provided by Farm Service Agency as of 5/21/2008.

©2026 AgriData, Inc.