

320 acres~Leslie,AR~Stone County~Riverfront~Timber investment~No legal access~
Angora Mountain Road
Leslie, AR 72645

\$320,000
320± Acres
Stone County



**320 acres~Leslie,AR~Stone County~Riverfront~Timber investment~No legal access~
Leslie, AR / Stone County**

SUMMARY

Address

Angora Mountain Road

City, State Zip

Leslie, AR 72645

County

Stone County

Type

Timberland, Hunting Land, Riverfront, Undeveloped Land

Latitude / Longitude

35.79341 / -92.405611

Acreage

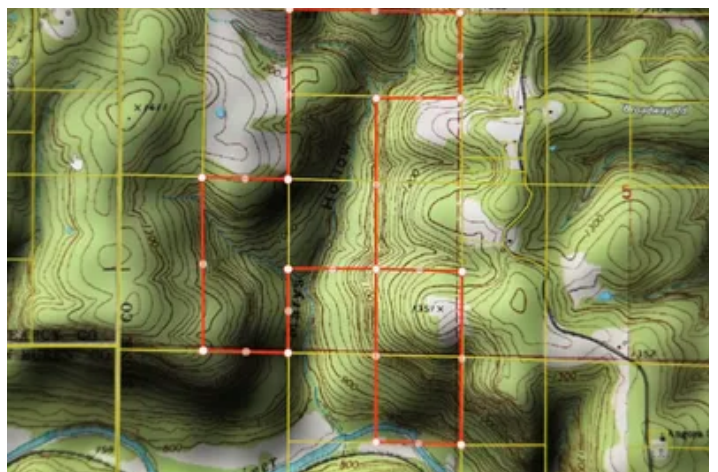
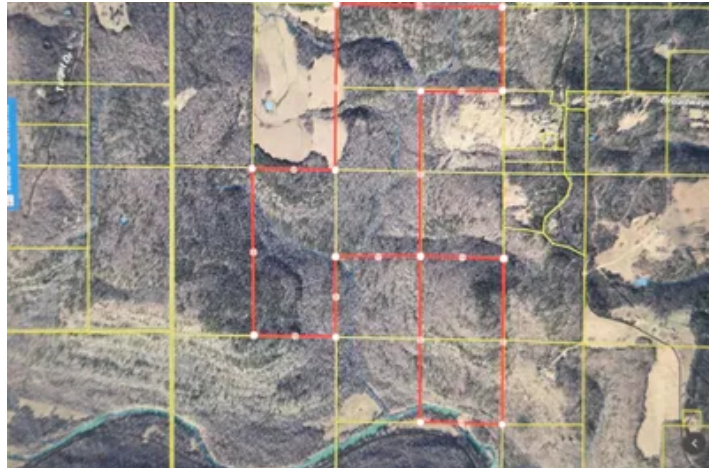
320

Price

\$320,000

Property Website

<https://www.mossoakproperties.com/property/320-acres-leslie-ar-stone-county-riverfront-timber-investment-no-legal-access-/stone/arkansas/104213/>



**320 acres~Leslie,AR~Stone County~Riverfront~Timber investment~No legal access~
Leslie, AR / Stone County**

PROPERTY DESCRIPTION

320 +/- Acres | Stone County, Arkansas | Middle Fork Little Red River Frontage

Held by the same family for over **70 years**, this remarkable **320 +/- acre tract in Stone County, Arkansas** offers a rare opportunity to own a true piece of the Ozarks-untouched, unspoiled, and rich with natural character.

This property features approximately **750 feet of Middle Fork Little Red River frontage**, along with **three year-round creeks** winding through the land. These abundant water sources create an ideal environment for wildlife, making this property a haven for **whitetail deer, turkey, and bear**.

The timber has remained **unharvested for decades**, offering not only a pristine, natural setting but also **strong long-term investment potential**. Towering mature hardwoods, diverse terrain, and untouched ground provide the kind of landscape that is becoming increasingly difficult to find.

Whether you're looking for a **hunting property, recreational retreat, or land investment**, this tract offers incredible opportunity. Its combination of **water, wildlife habitat, mature timber, and long family ownership** makes it truly stand out.

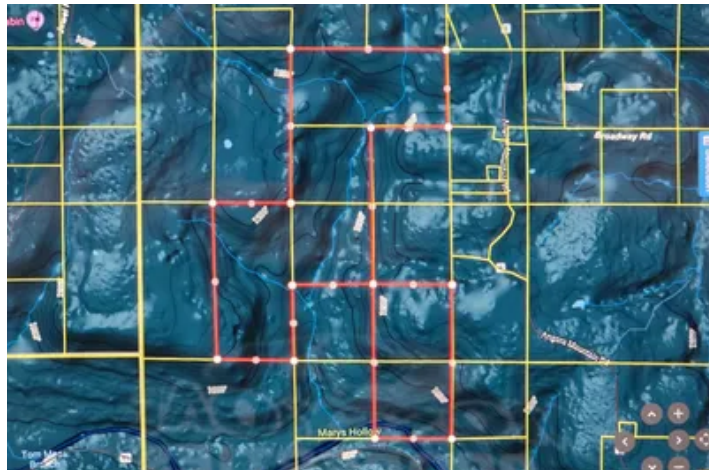
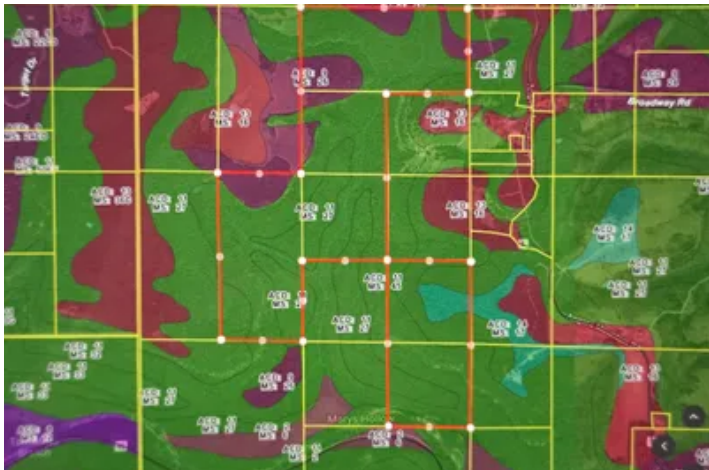
Located in the scenic hills of **Stone County**, this property embodies the beauty and seclusion the Ozarks are known for.

Please note: There is currently no legal access to the property.

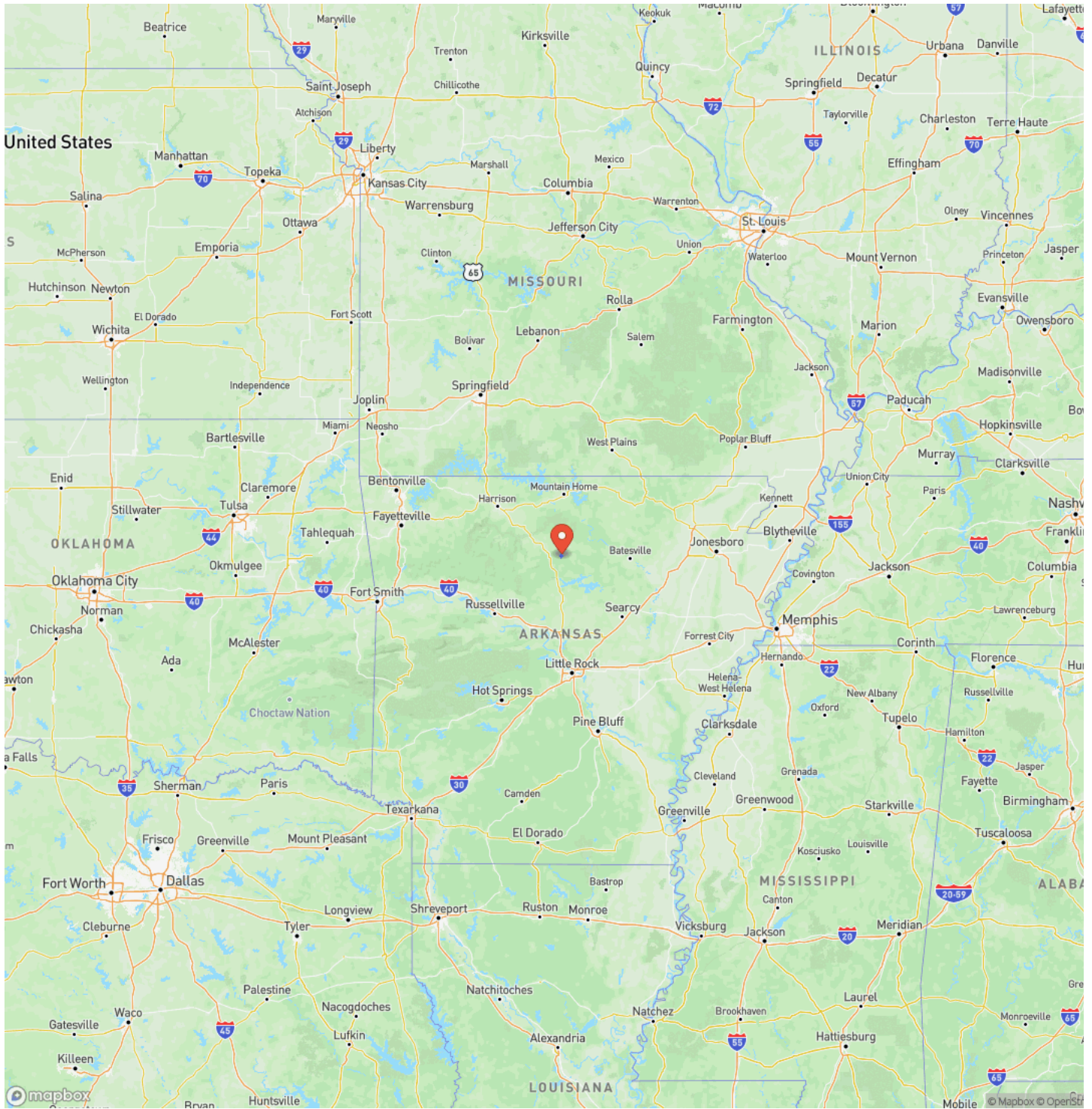
Proudly listed with Mossy Oak Properties Selling Arkansas, [870-495-2123](tel:870-495-2123)
Listing Agent, Krystn Bourgeois, [501-270-5276](tel:501-270-5276)

Equal Housing Opportunity, www.WeSellArkansas.com

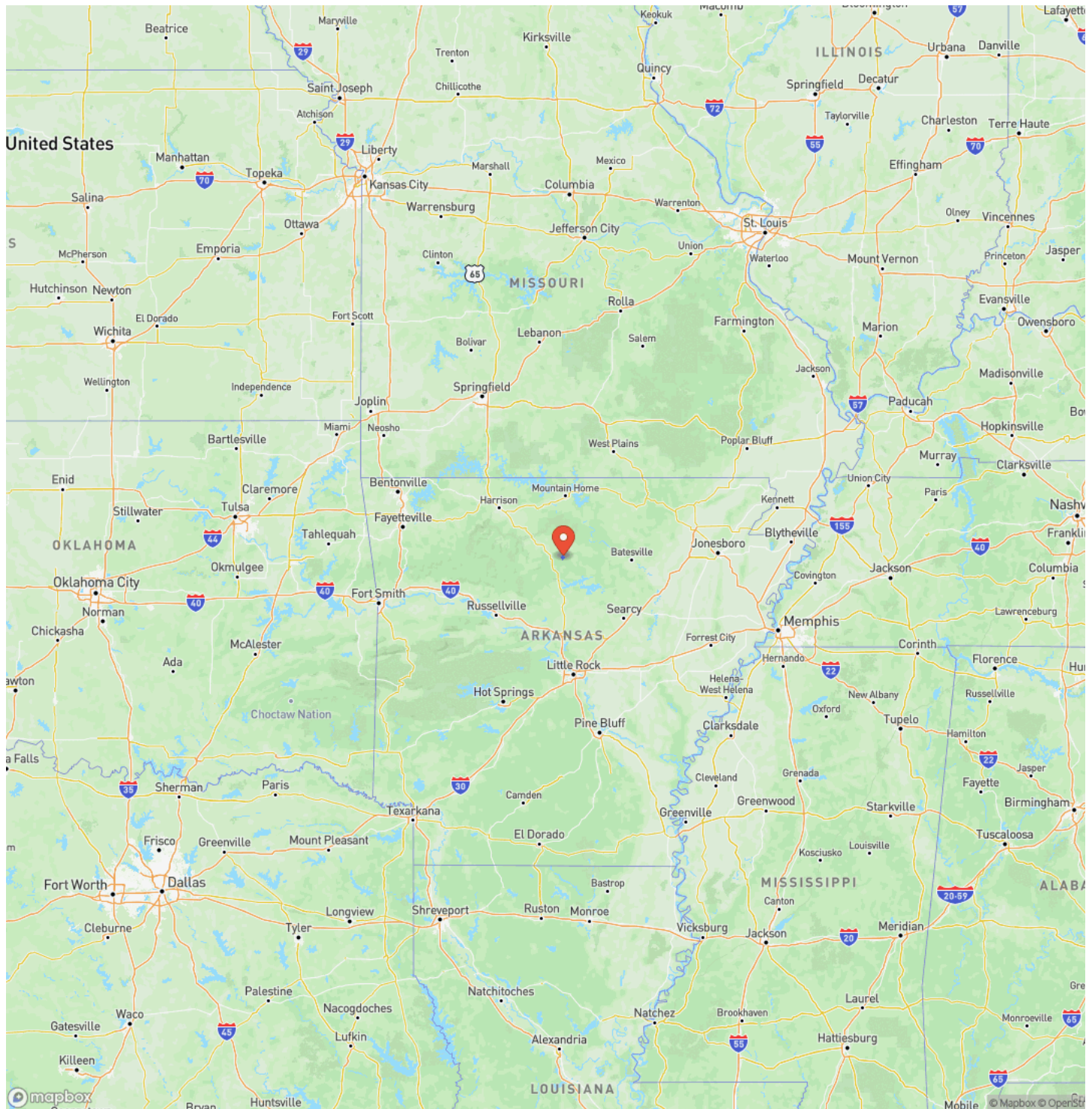
320 acres~Leslie,AR~Stone County~Riverfront~Timber investment~No legal access~
Leslie, AR / Stone County



Locator Map

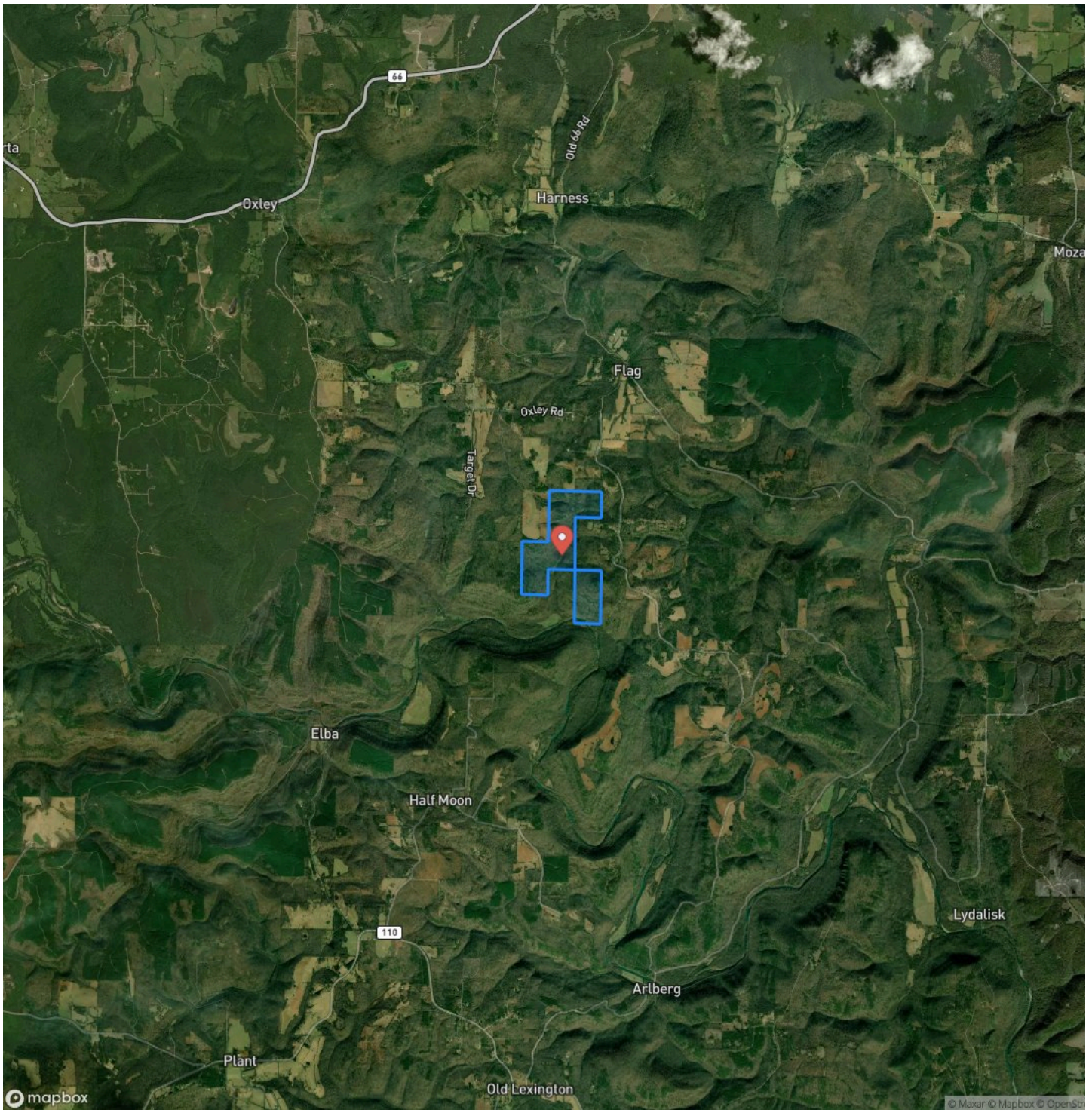


Locator Map



320 acres~Leslie,AR~Stone County~Riverfront~Timber investment~No legal access~
Leslie, AR / Stone County

Satellite Map



DISCLAIMERS

There is no legal access. Maps are for a general reference only.



Mossy Oak Properties Selling Arkansas

8111 N St Louis St

Cave City, AR 72521

(870) 495-2123

<https://wesellarkansas.com/>

