

**Custom Mountain Retreat with Views | 3BR Home,
Shop, RV Shed & Acreage, Mountain View, AR**
148 Cooper Point Drive
Mountain View, AR 72560

\$550,000
6.8± Acres
Stone County



**Custom Mountain Retreat with Views | 3BR Home, Shop, RV Shed & Acreage, Mountain View, AR
Mountain View, AR / Stone County**

SUMMARY

Address

148 Cooper Point Drive

City, State Zip

Mountain View, AR 72560

County

Stone County

Type

Residential Property

Latitude / Longitude

35.82789 / -92.103504

Taxes (Annually)

\$1,565

Dwelling Square Feet

2,769

Bedrooms / Bathrooms

3 / 2

Acreage

6.8

Price

\$550,000

Property Website

<https://www.mossoakproperties.com/property/custom-mountain-retreat-with-views-3br-home-shop-rv-shed-acreage-mountain-view-ar/stone/arkansas/101740/>



Custom Mountain Retreat with Views | 3BR Home, Shop, RV Shed & Acreage, Mountain View, AR Mountain View, AR / Stone County

PROPERTY DESCRIPTION

Mountain View Home with Acreage | Custom Retreat, Shop, RV Shed & Fiber Internet

Welcome to a truly **one-of-a-kind mountain retreat**, perfectly positioned just outside the city limits on a **quiet no-outlet road**, offering unmatched **privacy, long-range mountain views, and peaceful surroundings**.

This **custom-built home with acreage** sits atop a gentle ridge, capturing **year-round panoramic views of the Ozark Mountains**. Inside, you'll find **exceptional craftsmanship** throughout, featuring **3 bedrooms and 2.5 bathrooms** with a spacious **open-concept living area anchored by a stately fireplace**.

The kitchen is designed for both function and style, offering **quartz countertops, custom cabinetry, and direct access to a large covered back deck**—perfect for entertaining or relaxing while taking in the scenery.

The **primary suite is a private retreat**, complete with a **sunroom, walk-in shower, oversized soaking tub, and two walk-in closets**, providing comfort and luxury.

Additional features include:

- **Whole house generator**
- **24x36 workshop/shop building**
- **RV shed for covered parking**
- **8x14 storm shelter**
- Charming **treehouse-style cabin** on the property
- **Fiber optic internet**—ideal for remote work or home office

This property offers the perfect balance of **seclusion and convenience**, with plenty of room to **garden, explore, or simply enjoy nature**.

Whether you're looking for a **full-time residence, mountain getaway, or investment property**, this home has everything you need to enjoy the **Ozark lifestyle**.

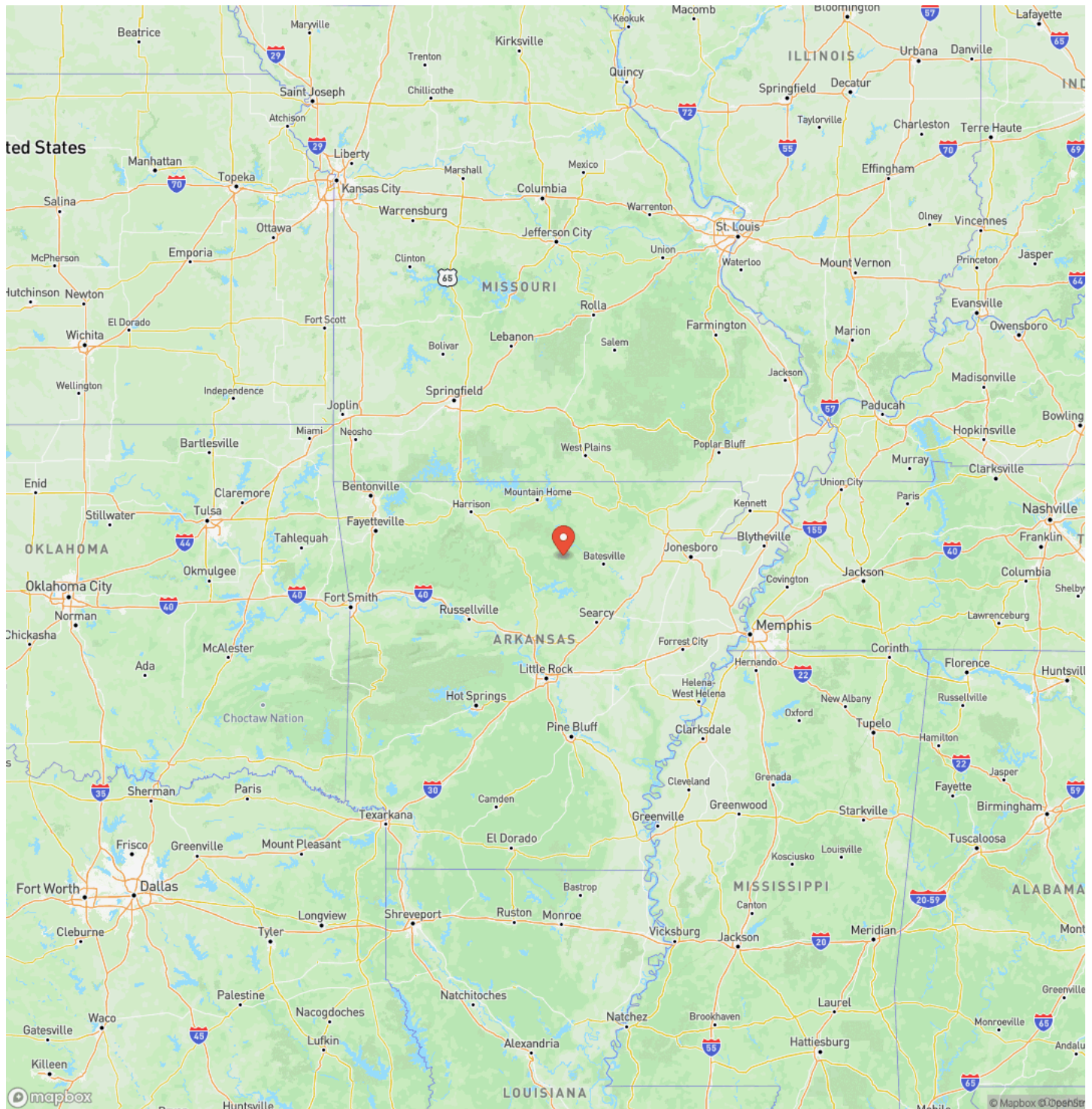
Furniture is negotiable.

Listing Agent, Krystn Bourgeois at [501-270-5276](tel:501-270-5276), with Mossy Oak Properties Selling Arkansas, [870-495-2123](tel:870-495-2123).
Equal Housing Opportunity. www.WeSellArkansas.com.

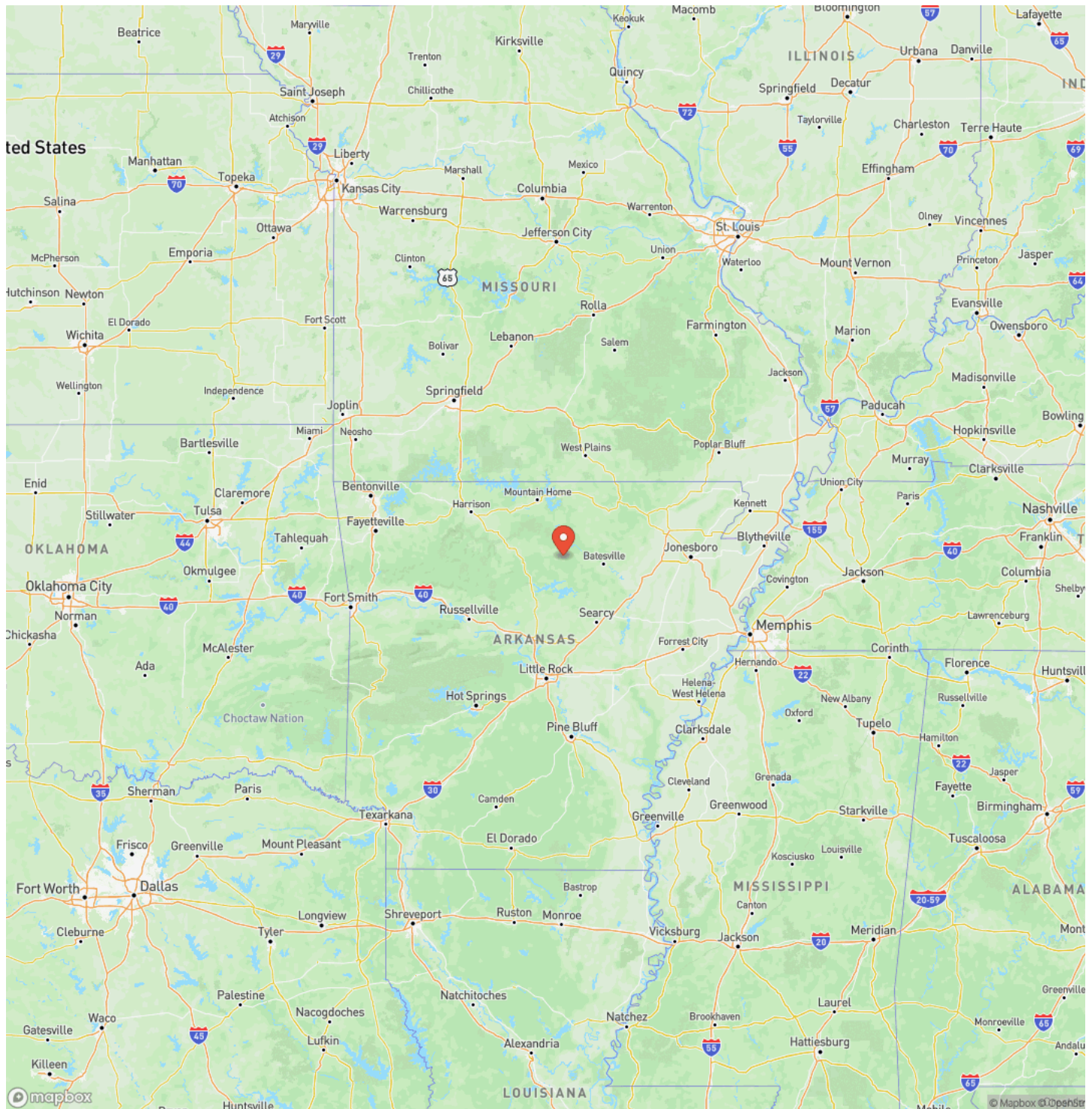
Custom Mountain Retreat with Views | 3BR Home, Shop, RV Shed & Acreage, Mountain View, AR
Mountain View, AR / Stone County



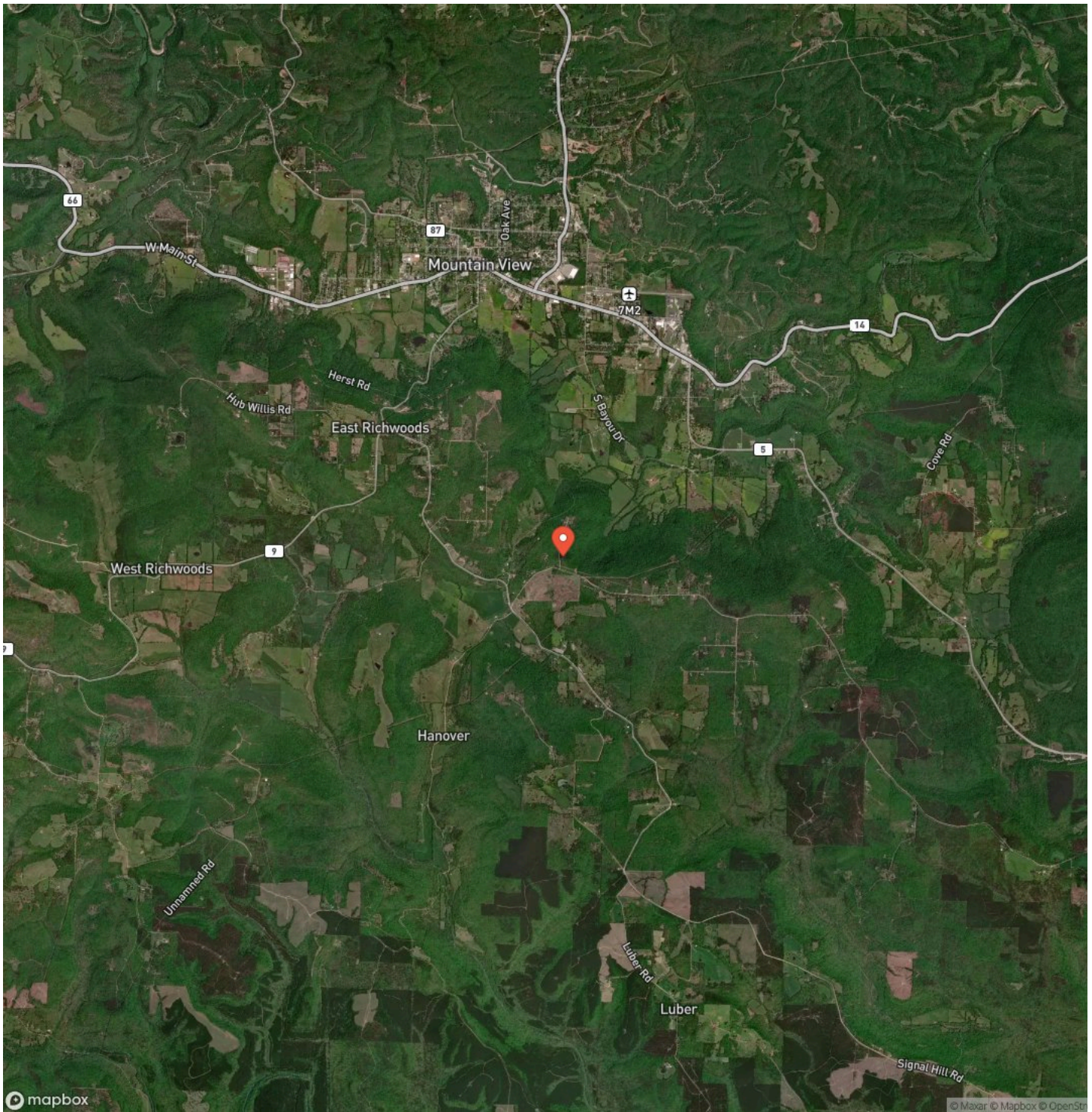
Locator Map



Locator Map



Satellite Map



DISCLAIMERS

Information in this brochure is provided solely for information purposes and does not constitute an offer to sell or advertise real estate outside the states in which broker or agent licensed. The information presented has been obtained from sources deemed to be reliable, but is not guaranteed or warranted by the agent, broker, or the sellers of these properties. This offering is subject to errors, omissions, prior sale, price change, correction or withdrawal from the market without notice. All references to age, square footage, income, expenses, acreage, carrying capacity, and land classification, etc. are approximate. Prospective buyers are chargeable with and expected to conduct their own independent investigation of the information and the property and to rely only on those results. Sellers reserve the right to accept or reject any and all offers without liability to any buyer or cooperating broker.

Maps are provided for illustration purposes only, the accuracy is not warranted. Parcels on interactive maps are not adjusted to match aerial backgrounds. This information is for reference purposes only and is not a legal document. Data maps contain errors. The seller and seller's agent are making known to all potential buyers that there may be variations between the location of the existing fence lines and the legal description of the deeded property. Seller and seller's agent make no warranties with regard to the location of the fence lines in relationship to the deeded property lines, nor does the Seller make any warranties or representations with regard to the specific acreage contained within the fenced property lines. Seller is selling the property in an "as is" condition, which includes the location of the fences as they exist. Boundaries shown on the accompanying maps are approximate, based on county parcel data. The maps are not to scale. The accuracy of the maps is not guaranteed. Prospective buyers are encouraged to verify fence lines, deeded property lines and acreages using a licensed surveyor at their own expense.

Mossy Oak Properties Selling Arkansas

8111 N St Louis St

Cave City, AR 72521

(870) 495-2123

<https://wesellarkansas.com/>

