

Rare 200 +/- Acre Tract | Timber, Views & Hunting  
Paradise, Fox, Arkansas, Stone County  
Jimmy Creek Road  
Fox, AR 72051

**\$400,000**  
199.84± Acres  
Stone County



**\*Lines are not a survey.  
Lines are for general  
reference only.\***



**Rare 200 +/- Acre Tract | Timber, Views & Hunting Paradise, Fox, Arkansas, Stone County**  
**Fox, AR / Stone County**

---

**SUMMARY**

**Address**

Jimmy Creek Road

**City, State Zip**

Fox, AR 72051

**County**

Stone County

**Type**

Hunting Land, Recreational Land, Timberland

**Latitude / Longitude**

35.844116 / -92.36067

**Taxes (Annually)**

\$193

**Acreage**

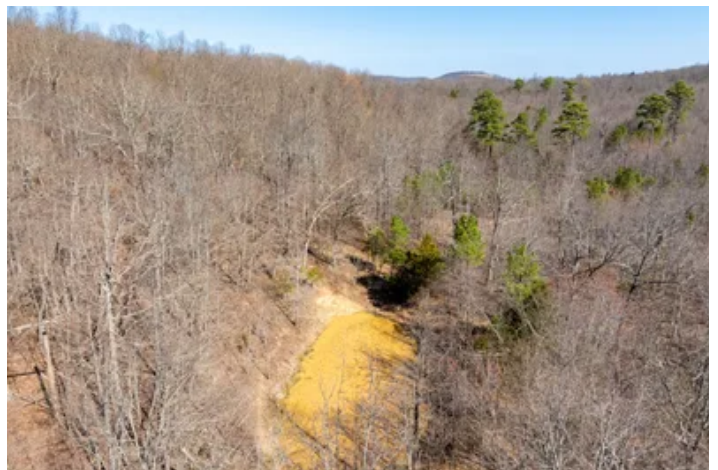
199.84

**Price**

\$400,000

**Property Website**

<https://www.mossoakproperties.com/property/rare-200-acre-tract-timber-views-hunting-paradise-fox-arkansas-stone-county-/stone/arkansas/101686/>



## Rare 200 +/- Acre Tract | Timber, Views & Hunting Paradise, Fox, Arkansas, Stone County Fox, AR / Stone County

---

### **PROPERTY DESCRIPTION**

#### **199.84 +/- Acres | Hunting Land, Timber & Bluffs in Fox, Stone County, Arkansas**

Discover the perfect blend of **seclusion, natural beauty, and investment potential** with this **199.84 +/- acre tract in Fox, Arkansas**, located in highly desirable **Stone County** in the heart of the Ozarks.

This property offers a diverse landscape featuring **marketable timber, rolling terrain, and stunning bluff views** overlooking the surrounding Ozark countryside. With multiple elevated points, you'll enjoy **panoramic views** that make this property ideal for a **future cabin site, hunting retreat, or recreational getaway**.

Accessed via an easement road, this land remains **private, quiet, and undisturbed**, making it perfect for those seeking a true **off-grid escape or secluded property in Arkansas**. Whether you're looking to get away from it all or invest in land, this tract offers both **privacy and long-term value**.

The property is rich in wildlife, with strong signs of **whitetail deer and eastern wild turkey**, making it a prime **hunting property in Stone County Arkansas**. The combination of timber, terrain, and cover creates excellent **habitat and bedding areas**, ideal for serious hunters.

With **no utilities currently on site**, you have the freedom to design your own **off-grid cabin, hunting camp, or private retreat** exactly how you envision it.

Located within driving distance of **Mountain View, Arkansas**, known for its music, festivals, and outdoor recreation, this property offers the best of both worlds—**seclusion with access to amenities**.

If you've been searching for:  
**Large acreage in Arkansas**  
**Hunting land with timber and views**  
**Secluded land in the Ozarks**  
**Investment land in Stone County**

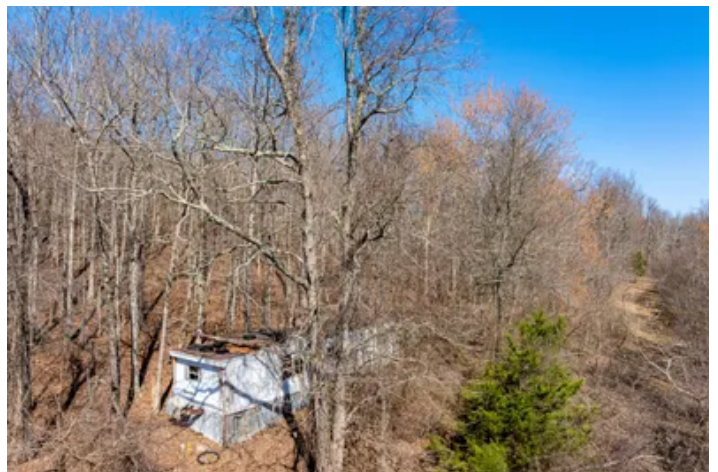
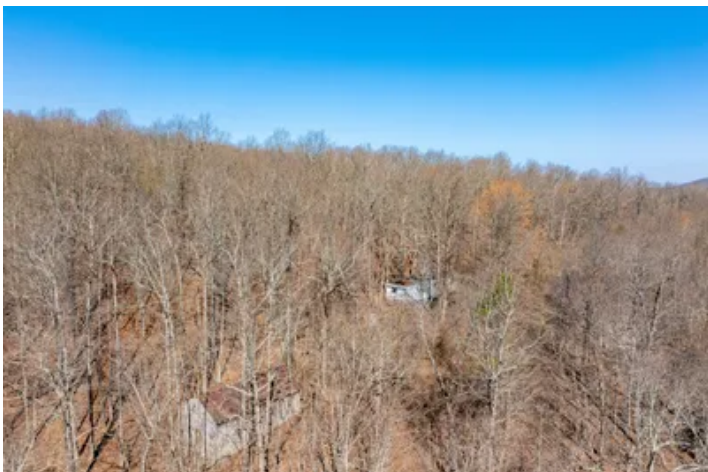
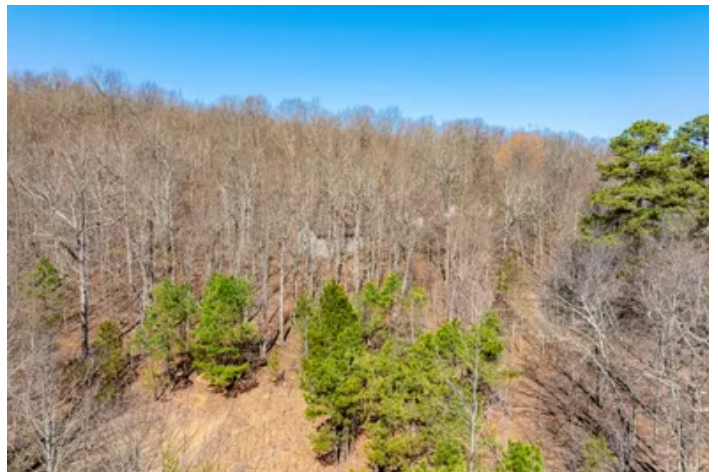
...this property checks all the boxes.

**Large tracts like this rarely come available in this area**—don't miss your opportunity to own a true piece of the Ozarks.

Listing Agent, Krystn Bourgeois at [501-270-5276](tel:501-270-5276), with Mossy Oak Properties Selling Arkansa, [870-495-2123](tel:870-495-2123).  
Equal Housing Opportunity. [www.WeSellArkansas.com](http://www.WeSellArkansas.com).

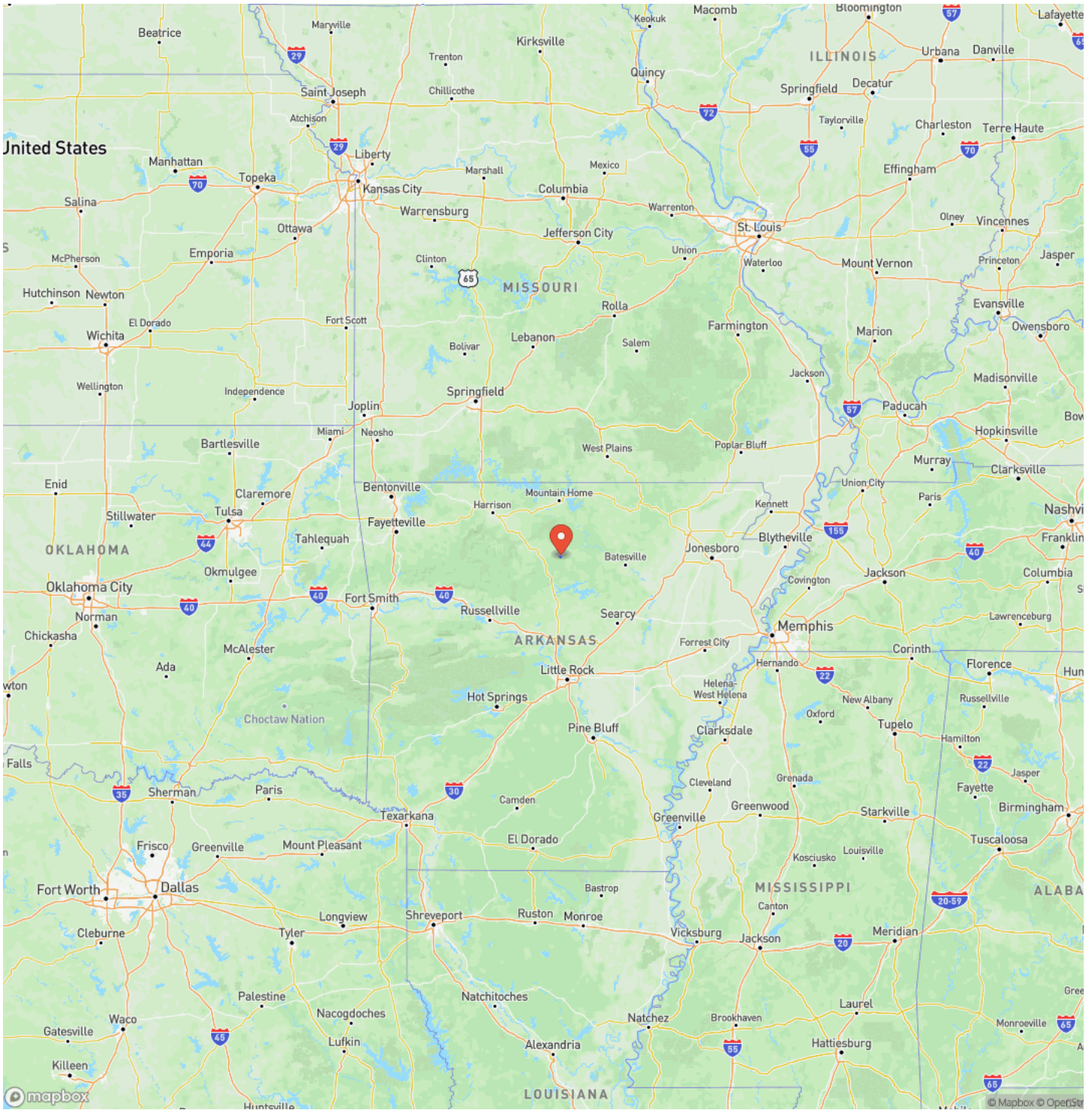
Rare 200 +/- Acre Tract | Timber, Views & Hunting Paradise, Fox, Arkansas, Stone County  
Fox, AR / Stone County

---

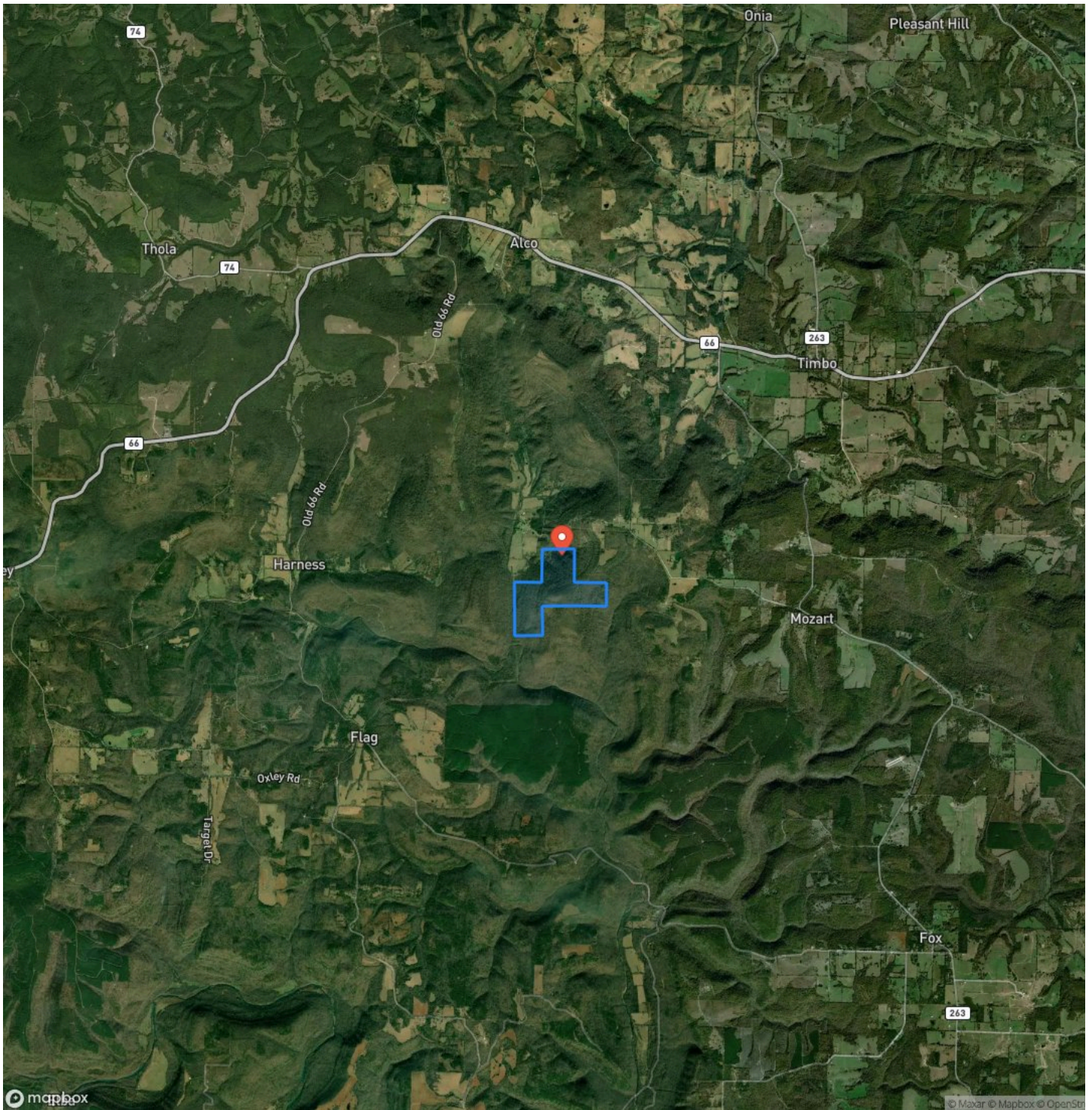




# Locator Map



## Satellite Map







## **DISCLAIMERS**

Information in this brochure is provided solely for information purposes and does not constitute an offer to sell or advertise real estate outside the states in which broker or agent licensed. The information presented has been obtained from sources deemed to be reliable, but is not guaranteed or warranted by the agent, broker, or the sellers of these properties. This offering is subject to errors, omissions, prior sale, price change, correction or withdrawal from the market without notice. All references to age, square footage, income, expenses, acreage, carrying capacity, and land classification, etc. are approximate. Prospective buyers are chargeable with and expected to conduct their own independent investigation of the information and the property and to rely only on those results. Sellers reserve the right to accept or reject any and all offers without liability to any buyer or cooperating broker.

Maps are provided for illustration purposes only, the accuracy is not warranted. Parcels on interactive maps are not adjusted to match aerial backgrounds. This information is for reference purposes only and is not a legal document. Data maps contain errors. The seller and seller's agent are making known to all potential buyers that there may be variations between the location of the existing fence lines and the legal description of the deeded property. Seller and seller's agent make no warranties with regard to the location of the fence lines in relationship to the deeded property lines, nor does the Seller make any warranties or representations with regard to the specific acreage contained within the fenced property lines. Seller is selling the property in an "as is" condition, which includes the location of the fences as they exist. Boundaries shown on the accompanying maps are approximate, based on county parcel data. The maps are not to scale. The accuracy of the maps is not guaranteed. Prospective buyers are encouraged to verify fence lines, deeded property lines and acreages using a licensed surveyor at their own expense.

---

**Mossy Oak Properties Selling Arkansas**

8111 N St Louis St

Cave City, AR 72521

(870) 495-2123

<https://wesellarkansas.com/>

---

