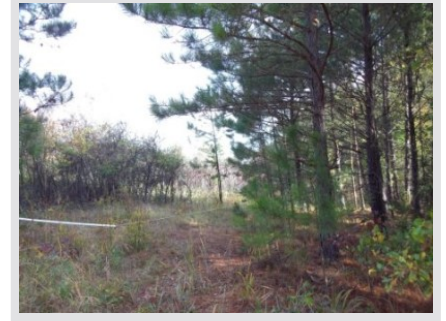


33 Acres - Greenwood County, South Carolina

Tract A652-A (SOLD)



Acreage

32.867 +/- acres

General Description

This 32.867 ac tract has a great home site on the front and acreage that can be hunted and used as a timber investment on the back, or fenced for horses or cattle. Owner financing available to qualified buyers. TM # 6922-157-754

Location / Directions:

From Ware Shoals, take Hwy 420 south toward Shoals Junction. After you pass 114 Smith Street Ext, the property starts on the left. Look for Advance Land and Timber signs.

Agent:

Mark McMillan
803-957-9503

Aerial Map

