



✉ contact@advancelandandtimber.com

📞 (803) 957-9503

www.advancelandandtimber.com

341 Acres - Burke County, Georgia  
Tract B94B George Perkins Tract (New Listing)



### Acreage

341 +/- Acres

### General Description

Conveniently located just off Hwy 25, north of Waynesboro, this tract has it all! Loaded with mature stands of Loblolly and hardwood. Timber value is in excess of \$1,000 per acre. Plantation has been well managed and is ready for product class change. Easy access from George Perkins Road and the southern portion front on Brier Creek. Parcel has established food plots and abundant wildlife. This tract has it all!

### Location / Directions:

From Waynesboro, travel Hwy 25 north for 6 miles and turn left onto George Perkins Road. Tract starts approximately .75 miles and fronts on both side of the road.

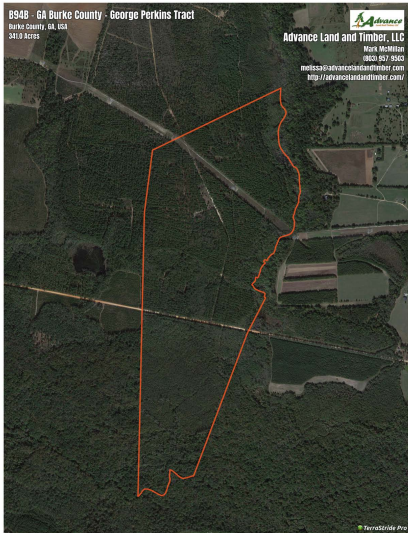
### Agent:

Mark McMillan  
803-957-9503

Aerial Map 

8948 - GA Burke County - George Perkins Tract  
Burke County, GA, USA  
31.9 Acres

  
Advance Land and Timber, LLC  
Mark McMillan  
703.697.9048  
melissa@advanceandtimber.com  
http://advanceandtimber.com/



© TerraStadia Pro