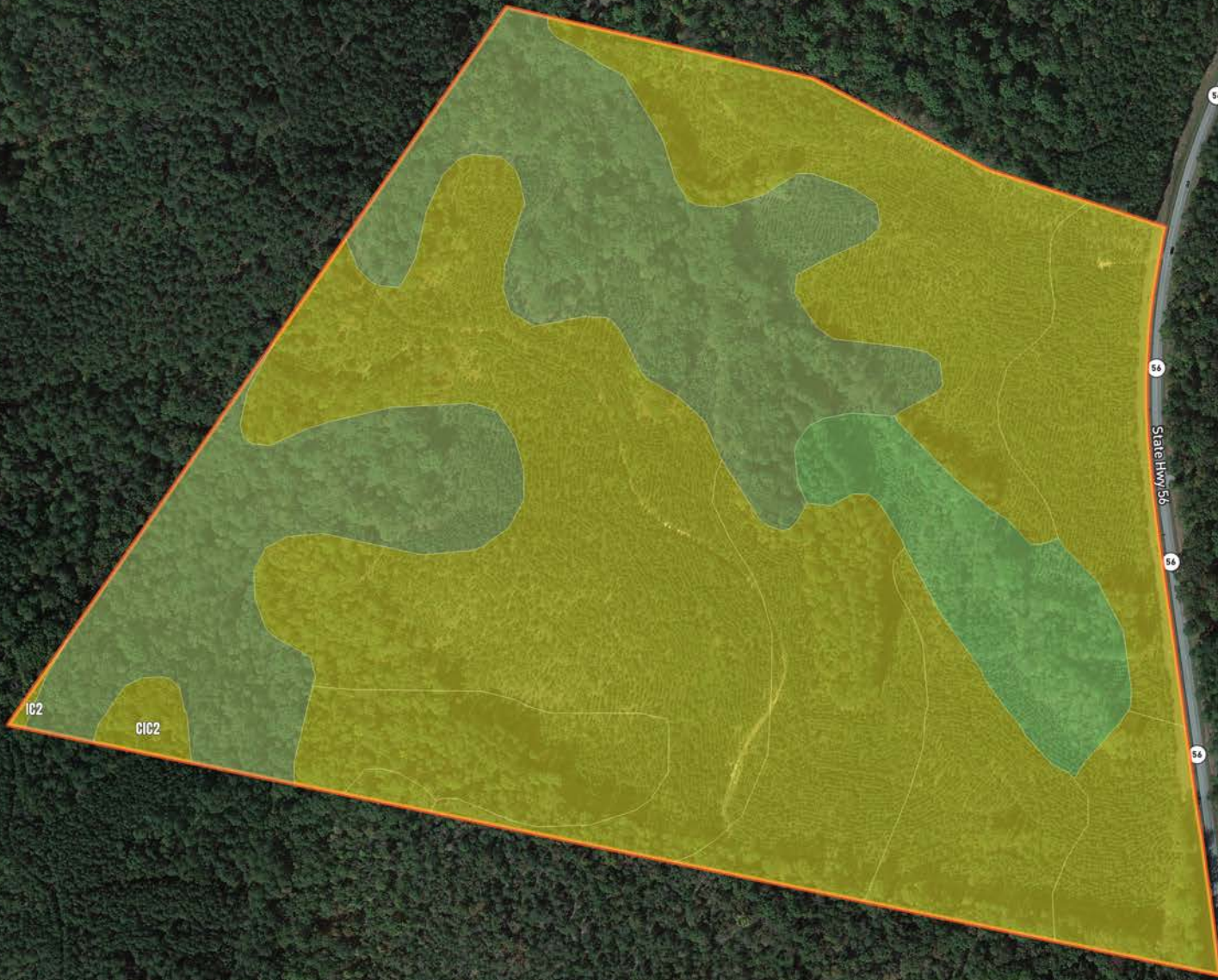


B415 - SC
Laurens Co -
Tract 6314
102.0 Acres



B415 - SC Laurens Co - Tract 6314

Soil Report

Symbol	Map Unit Description	Farm Land Class	Area (AC)	Available Water Storage (0-150cm - Weighted Average)	Flooding Frequency (Maximum)	Drainage Class (Dominant Condition)	Drainage Class (Wettest Component)	Hydric Classification	Water Table Depth (Annual Minimum)	Water Table Depth (April to June Minimum)	Bedrock Depth (Minimum)	Soil Order
ClC2	Cecil sandy loam, 6 to 10 percent slopes, eroded	Farm land of statewide importance	0	20.9	None	Well drained	Well drained	0	0	0	0	Ultisols
WIF	Wilkes soils, 15 to 40 percent slopes	Not prime farmland	0	3.6	None	Well drained	Well drained	0	0	0	25	Alfisols
PaD2	Paulet sandy clay loam, 10 to 15 percent slopes, eroded	Not prime farmland	0	19.1	None	Well drained	Well drained	0	0	0	0	Ultisols
CIB	Cecil sandy loam, 2 to 6 percent slopes	All areas are prime farmland	0	17.6	None	Well drained	Well drained	0	0	0	0	Ultisols
Gp	Gullied land-Paulet soils complex	Not prime farmland	0	18.5	None	Well drained	Well drained	0	0	0	0	Entisols
MhF	Madison and Paulet soils, 15 to 40 percent slopes	Not prime farmland	0	21.0	None	Well drained	Well drained	0	0	0	0	Ultisols
HyB2	Hwassee sandy clay loam, 2 to 6 percent slopes, eroded	Farm land of statewide importance	0	20.7	None	Well drained	Well drained	0	0	0	0	Ultisols