

75 Acres - Tishomingo County, Mississippi Tract 8211 (SOLD)



Acreage

75.36 +/- acres

General Description

Located conveniently between Corinth and Burnsville this tract is ideal for recreation as well as timber production and investment. Easily accessed from over 1,000 feet of road frontage on County Roads 369 and 298. The timber consists of 61 acres of 9-year old pine plantation, with the remainder being mixed hardwood along the bottomland.

Location / Directions:

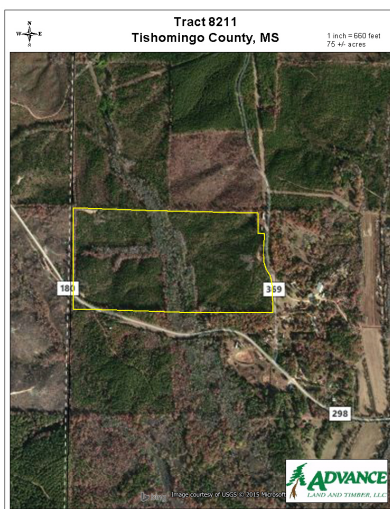
From Burnsville, MS take MS Hwy 365 North 3.5 miles, then left on Co Rd 298 for 3.7 miles, then right on Co Rd 369 for .4 miles. Look for Advance Land and Timber signs.

Mineral rights to be verified by buyer.

Agent:

Greg Fleming
601-678-7640

Aerial Map



The information provided on this map is believed to be accurate and is based on the best information available at this time, however, this information is in no way guaranteed. www.advancelandandtimber.com 1-800-950-9503