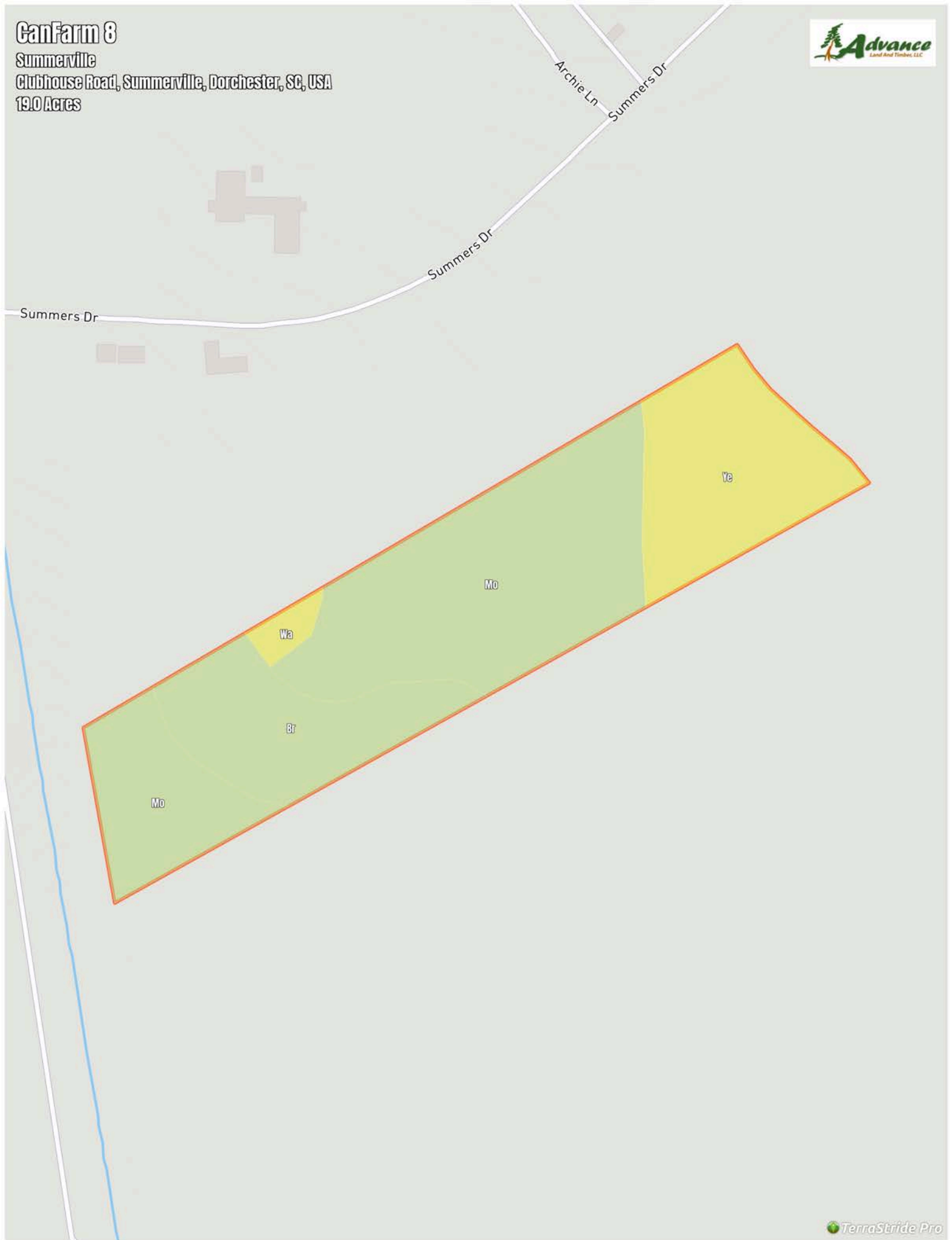


# CanFarm 8

Summerville

Clubhouse Road, Summerville, Dorchester, SC, USA

19.0 Acres



# CanFarm 8

## Soil Report

| Symbol | Map Unit Description                         | Farmland class                   | Area (AC) | Available Water Storage (0-150cm - Weighted Average) | Flooding Frequency (Maximum) | Drainage Class (Dominant Condition) | Drainage Class (Wettest Component) | Hydric Classification | Water Table Depth (Annual Minimum) | Water Table Depth (April to June Minimum) | Bedrock Depth (Minimum) | Soil Order |
|--------|--|----------------------------------|-----------|--|------------------------------|-------------------------------------|------------------------------------|-----------------------|------------------------------------|---|-------------------------|------------|
| Mo     | Mouzon fine sandy loam, occasionally flooded | Farmland of statewide importance | 0         | 19.8   | Occasional                   | Poorly drained                      | Poorly drained                     | 98                    | 15                                 | 15  | 0                       | Alfisols   |
| Ye     | Yemassee fine sandy loam                     | Prime farmland if drained        | 0         | 21.3   | None                         | Somewhat poorly drained             | Somewhat poorly drained            | 4                     | 38                                 | 0   | 0                       | Ultisols   |
| Br     | Brookman clay loam, frequently flooded       | Not prime farmland               | 0         | 28.8   | Frequent                     | Very poorly drained                 | Very poorly drained                | 97                    | 15                                 | 15  | 0                       | Alfisols   |
| Wa     | Wahee fine sandy loam                        | Farmland of statewide importance | 0         | 23.3   | None                         | Somewhat poorly drained             | Somewhat poorly drained            | 4                     | 31                                 | 0   | 0                       | Ultisols   |