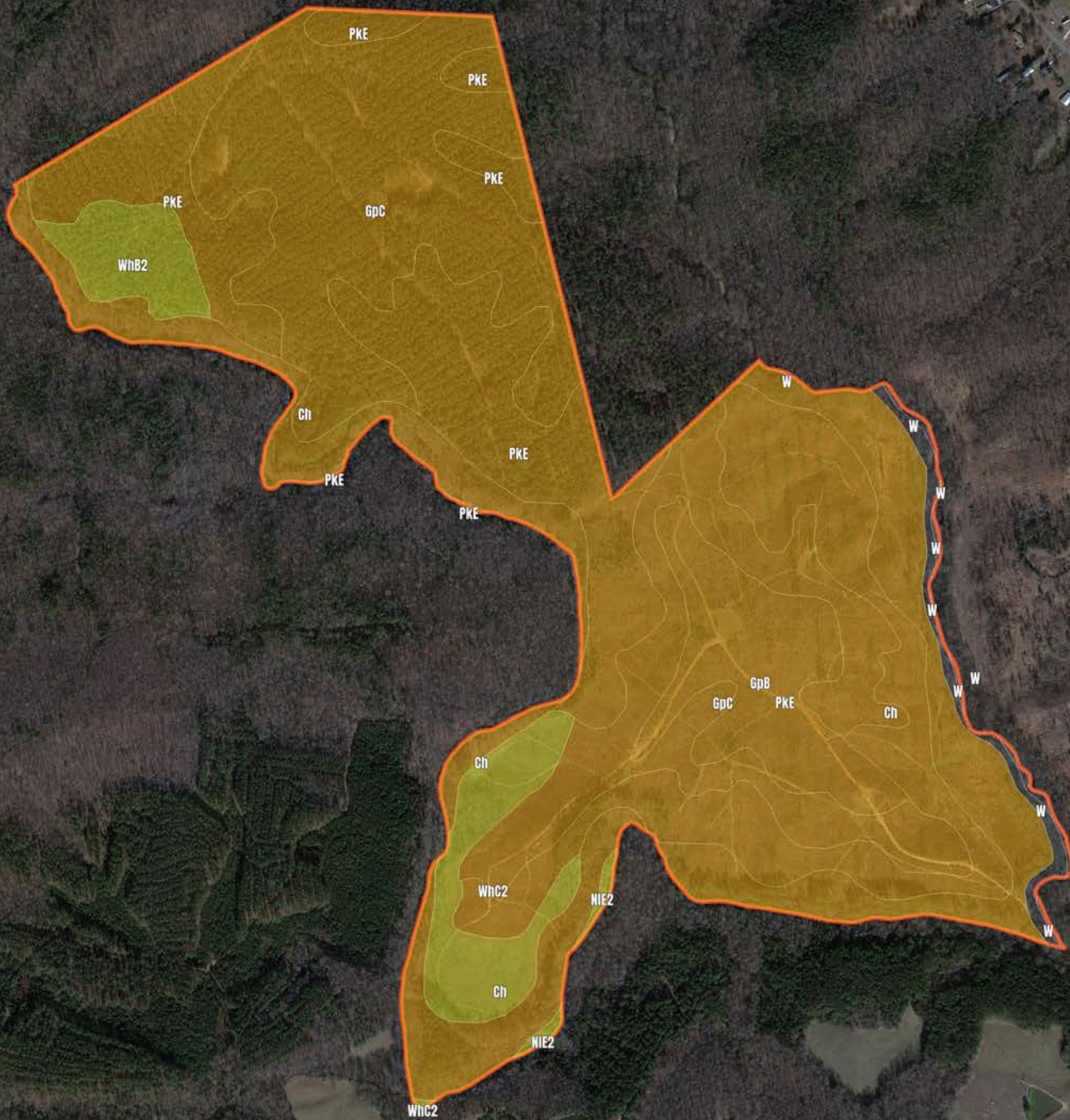


SC Lancaster Co-MC 8975

Tradesville
Tradesville, SC, USA
256.0 Acres



SC Lancaster Co-MC 8975

Soil Report

Symbol	Map Unit Description	Farmland class	Area (AC)	Available Water Storage (0-150cm - Weighted Average)	Flooding Frequency (Maximum)	Drainage Class (Dominant Condition)	Drainage Class (Wettest Component)	Hydric Classification	Water Table Depth (Annual Minimum)	Water Table Depth (April to June Minimum)	Bedrock Depth (Minimum)	Soil Order
GpC	Goldston-Pickens complex, 6 to 10 percent slopes	Not prime farmland	0	5.2	None	Well drained	Well drained	0	0	0	41	Inceptisols
PkE	Pickens slaty silt loam, 10 to 25 percent slopes	Not prime farmland	0	6.0	None	Somewhat excessively drained	Somewhat excessively drained	0	0	0	51	Inceptisols
Ch	Chewacla soils	Prime farmland if drained and either protected from flooding or not frequently f	0	29.3	Frequent	Somewhat poorly drained	Somewhat poorly drained	5	15	15	0	Inceptisols
GpB	Goldston-Pickens complex, 2 to 6 percent slopes	Not prime farmland	0	5.1	None	Well drained	Well drained	0	0	0	41	Inceptisols
WhC2	Wickham sandy loam, 6 to 10 percent slopes, eroded	Farmland of statewide importance	0	17.9	None	Well drained	Well drained	0	0	0	0	Ultisols
WhB2	Wickham sandy loam, 2 to 6 percent slopes, eroded	All areas are prime farmland	0	17.9	None	Well drained	Well drained	0	0	0	0	Ultisols
W	Water	Not prime farmland	0	0.0				0	0	0	0	
NIE2	Nason loam, 15 to 25 percent slopes, eroded	Not prime farmland	0	14.5	None	Well drained	Well drained	0	0	0	74	Ultisols