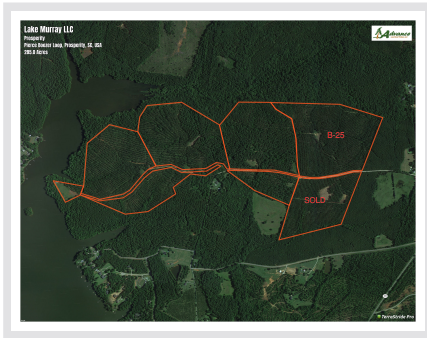


## 70 Acres - Newberry County, South Carolina

Tract B25 (New Listing)



### Acreage

70 +/- Acres

### General Description

This property is located in Prosperity, Newberry County, just off Hwy 391 on Pierce Boozer Loop Rd. It consists of 70 acres of thinned, manicured pine plantations that are 21 years old as well as established food plots. The property is already gated and has an excellent internal road system allowing you to access corner to corner. This tract is an ideal setting for a permanent residential site, hunting property, or country getaway that is only minutes away from the Saluda River and Lake Murray.

### Location / Directions:

#### From Lexington:

Travel Hwy 378 to traffic circle and take 391 toward Prosperity. Travel approximately 6 miles and turn left onto the 2nd entrance of Pierce Boozer Loop Road. Travel approximately 1/2 mile and parcel fronts on right. Look for Advance Land and Timber signs.

#### From Newberry:

Travel Hwy 76 to Hwy 391 and continue approximately 7.3 miles and turn right onto Pierce Boozer Loop Road. Travel approximately 1/2 mile and parcel fronts on right. Look for Advance Land and Timber signs.

### Agent:

Cole McMillan  
803-960-4630

### Aerial Map

