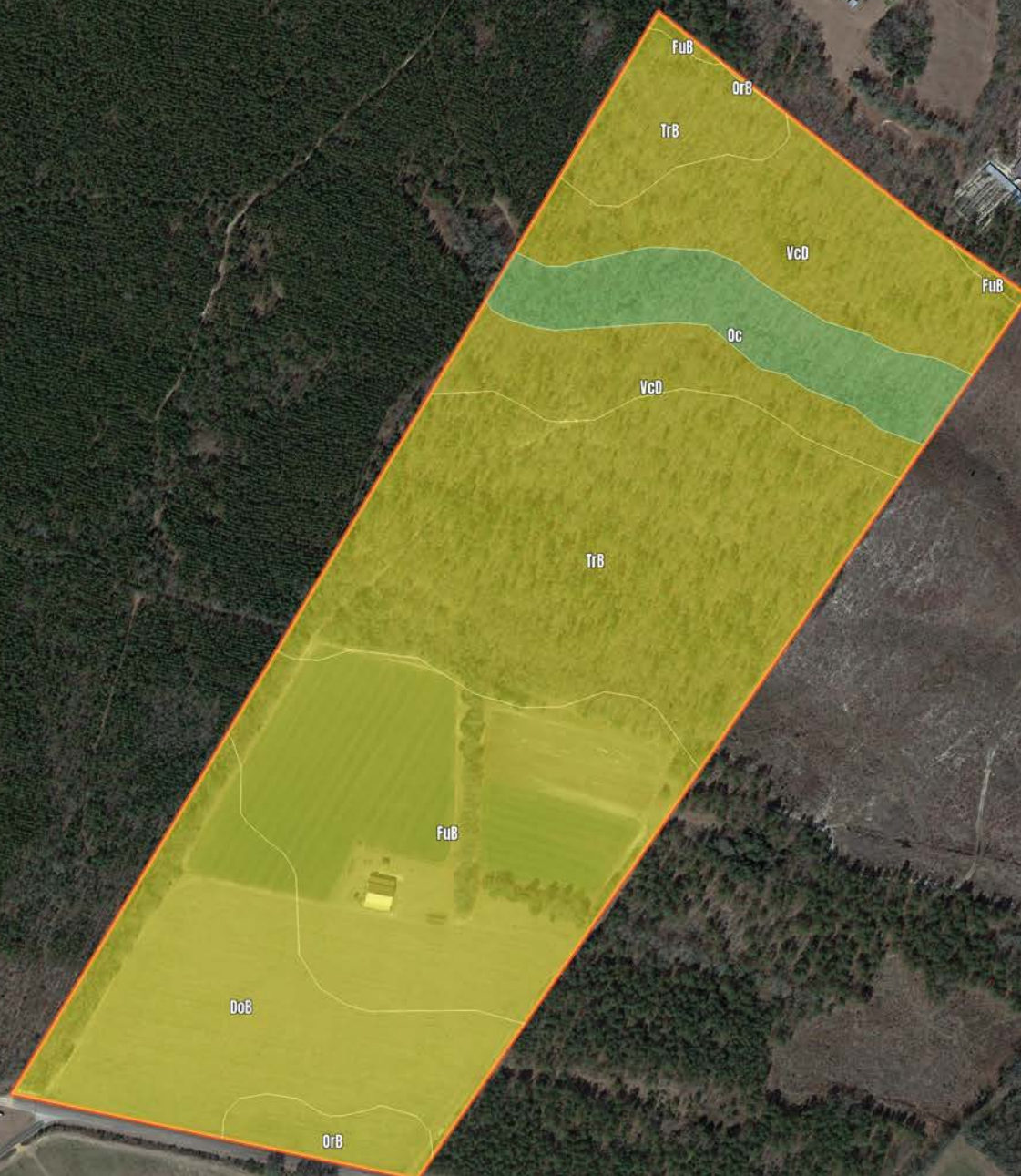


B433 - SC Aiken Co - Hollow Creek Farm

Salley

879 Hollow Creek Road, Salley, SC, USA

107.0 Acres



B433 - SC Aiken Co - Hollow Creek Farm

Soil Report

Symbol	Map Unit Description	Farmland classes	Area (AC)	Available Water Storage (0-150cm - Weighted Average)	Flooding Frequency (Maximum)	Drainage Class (Dominant Condition)	Drainage Class (Wettest Component)	Hydric Classification	Water Table Depth (Annual Minimum)	Water Table Depth (April to June Minimum)	Bedrock Depth (Minimum)	Soil Order
TrB	Troup sand, 0 to 6 percent slopes	Not prime farmland	0	12.1	None	Somewhat excessively drained	Somewhat excessively drained	2	0	0	0	Ultisols
FuB	Fuquay sand, 2 to 6 percent slopes	Farmland of statewide importance	0	16.3	None	Well drained	Well drained	0	153	0	0	Ultisols
DoB	Dothan loamy sand, 2 to 6 percent slopes	All areas are prime farmland	0	16.5	None	Well drained	Well drained	0	122	122	0	Ultisols
VcD	Vaughan-Ailey complex, 6 to 15 percent slopes	Not prime farmland	0	11.1	None	Well drained	Well drained	2	0	0	0	Ultisols
Oc	Ochlocknee sandy loam	Farmland of statewide importance	0	18.7	Occasional	Well drained	Well drained	0	122	122	0	Entisols
OrB	Orangeburg loamy sand, 2 to 6 percent slopes	All areas are prime farmland	0	18.8	None	Well drained	Well drained	0	0	0	0	Ultisols