



✉ contact@advancelandandtimber.com

📞 (803) 957-9503

www.advancelandandtimber.com

57 Acres - Newberry County, South Carolina

Tract B65 (SOLD)



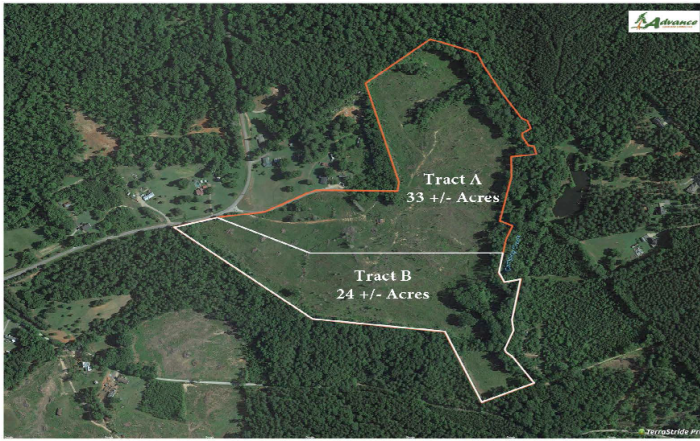
Acreage

57 +/- Acres

Property Price

General Description

This property consists of 57 acres located off Long Road in Prosperity, SC. You can buy the entire 57 acres or it can be subdivided into two different tracts (see map), tract A being 33 acres and tract B being 24 acres. The entire tract has been planted in 1-year old loblolly pines. The front 6 acres used to be pasture and can easily be converted back to that stage. There is a breathtaking view from the hillside that would make excellent homesites. You can even see Little Mountain in the distance. There is currently an old cabin on the property from the 1800s. This property is approximately 5 minutes from Mid Carolina High school. Camping Creek runs the bottom property line from corner to corner and makes up over 2,800 feet of creek frontage. Whether you are looking for 57 acres or 20 acres, this property can meet your needs.



B65 - SC Newberry County - Division Options

Tract	Acres	\$/Acre	Total Price
A	33	\$5,700	\$188,100
B	24	\$5,600	\$134,400

Location / Directions: 

From downtown Prosperity take Macedonia Church Road 2.6 miles and make a slight left turn onto Mt Pilgrim Church Road – in 1.5 miles turn right onto Long Road – in half a mile the property will be on the left.

Agent:

Mark Kiser Cole McMillan
 803-924-4465 803-960-4630

Aerial Map 

