

60 Acres - Horry County, South Carolina

Tract A725 G (SOLD)



Acreage

60 +/- Acres

General Description

Consists of 60 acres of well managed 26 year old stand of loblolly pine. This parcel will provide an excellent investment of recreational, residential and timberland use. The established plantation would provide an excellent opportunity for future income to pay for investment. Conveniently located to North Myrtle Beach and all of its amenities.

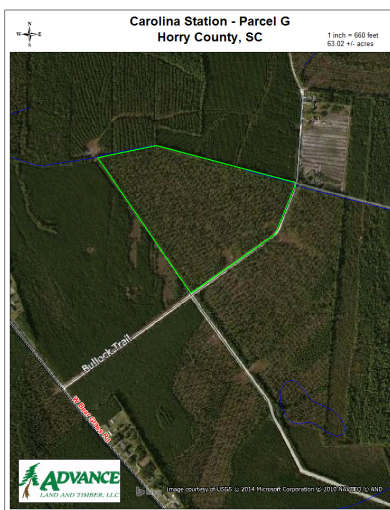
Location / Directions:

From North Myrtle Beach travel west on Hwy 9 to Longs Community. Turn left on Hwy 905 toward Conway. Travel approximately 3 miles and turn right on Bear Grass Road. Go north approximately 1 mile. Turn right on Bullock Road. Go approximately 2000 ft. and parcel fronts on left side of Bullock Road. Look for Advance Land and Timber signs.

Agent:

Carwin Owens
434-841-0784

Aerial Map



The information provided on this map is believed to be accurate and is based on the best information available at this time, however, this information is in no way guaranteed.

www.advancelandandtimber.com
1-800-800-9909