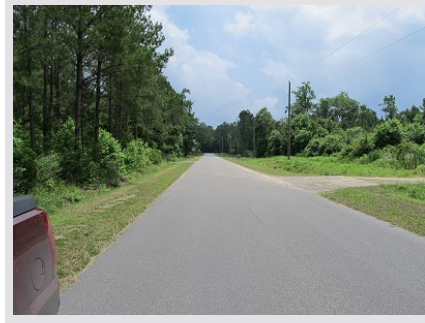


299 Acres - Horry County, South Carolina
Tract BC30 (SOLD)



Acreage

298.59 Acres

General Description

This parcel is minutes from North Myrtle Beach consisting of 298 acres right along the side of Hwy. 22 and 66. This parcel has over 500 ft. of road frontage with an excellent stand of timber with ages ranging from 2000, 1993, 1994, and 1996 stands of loblolly plantation pines. This parcel would be an excellent timber and recreational investment. TMS # 098-00-03-063

Location / Directions:

From Conway take 701 north to Hwy. 22 and turn right, turn left on to Hwy. 66 and after one mile turn left on to Ashley Circle. Look for Advance Land and Timber signs.

Agent:

Carwin Owens
434-841-0784

Aerial Map 