

256 Acres - Horry County, South Carolina

Tract A725 O (SOLD)



Acreage

256.4 +/- Acres

General Description

Consists of 256 +/- acres of well stocked plantation. Has excellent timber and recreational value. Parcel conveniently located to North Myrtle Beach.

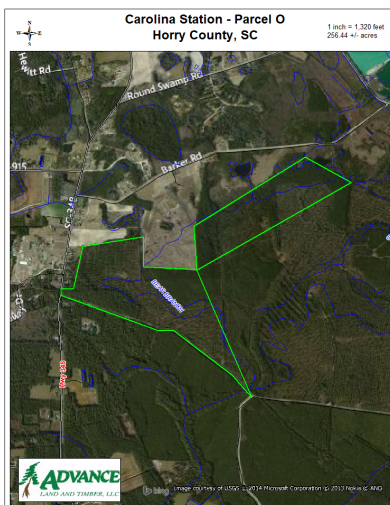
Location / Directions:

From North Myrtle Beach travel west on Hwy 9 to Longs Community. Turn left on Hwy 905 toward Conway. Travel approximately 9 miles and turn right on Bear Grass Road. Travel approximately 4 miles to the end of Bear Grass Road. Turn right on SR 348 and travel approximately 2 miles. Property is on the right fronting on SR 348.

Agent:

Carwin Owens
434-841-0784

Aerial Map



The information provided on this map is believed to be accurate and is based on the best information available at this time, however, this information is in no way guaranteed. www.advancelandandtimber.com 1-800-880-8809