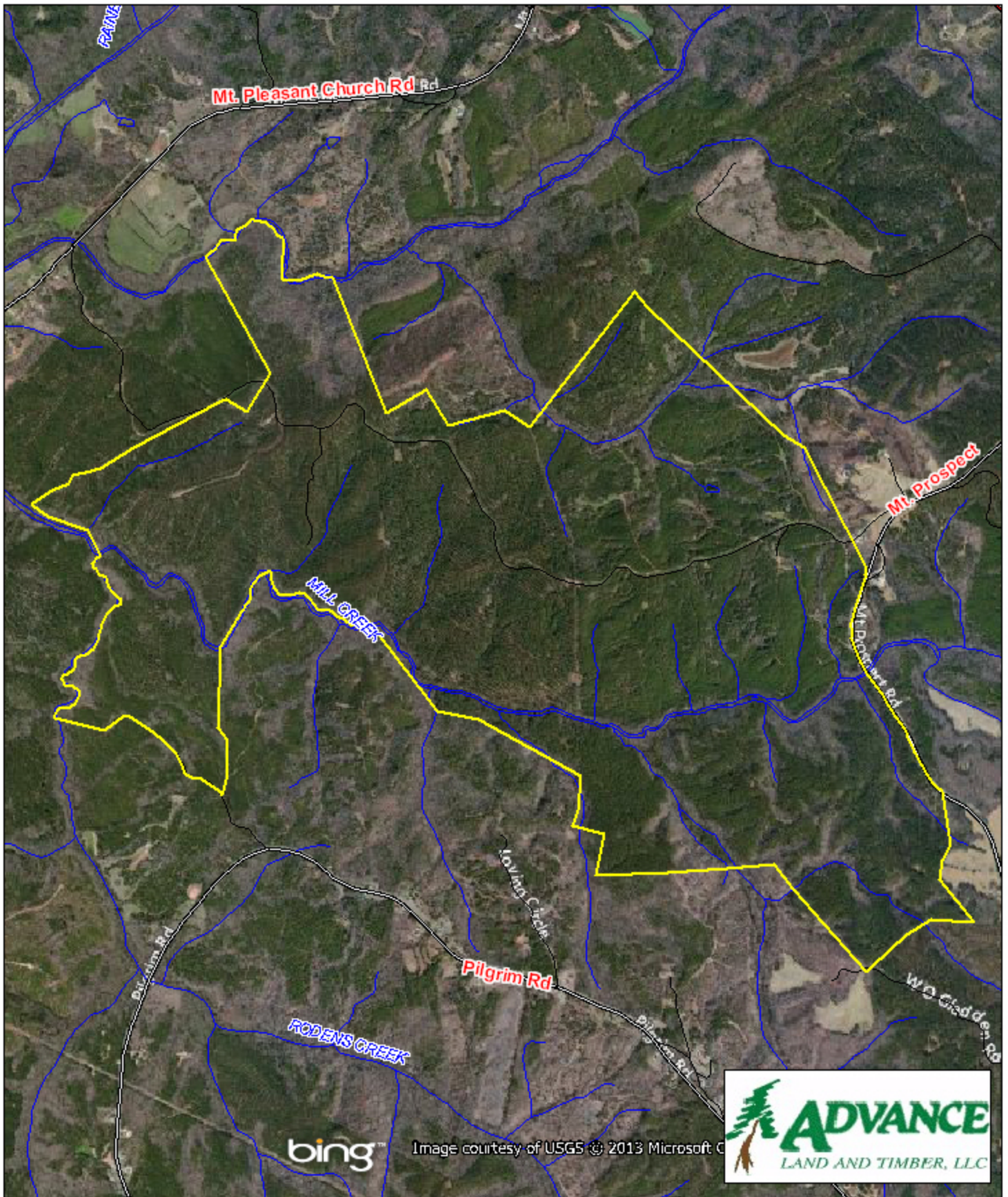




Mill Creek Tract Chester County, SC

1 inch = 2,000 feet
1623.33 +/- acres



The information provided on this map is believed to be accurate and is based on the best information available at this time, however, this information is in no way guaranteed.

www.advancelandandtimber.com
1-800-860-9909



Source: Esri, DigitalGlobe, GeoEye, i-cubed, USDA, USGS, AEX, Getmapping, Aerogrid, IGN, IGP, swisstopo, and the GIS User Community

Legend

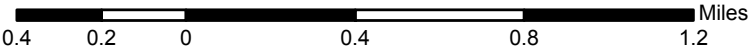
- Strata_ST**
- Natural Bottomland
 - Natural Upland
 - Non Timbered
 - Planted Upland

Property Map

Kershaw Unit - Mill Creek Tract : 1,623 acres

10/15/2013

1:28,773



Primary Data Frame
Coordinate System: NAD 1983 UTM Zone 17N

Locus

