

107 Acres - Aiken County, South Carolina

Tract A810 (SOLD)



Acreage

General Description

If you are looking for the ultimate getaway, this tract is a must! Parcel consists of 106 acres located just east of Perry, SC in Aiken County. Tract has excellent access, fronting on two county maintained dirt roads (Harry Poole and Tillman Poole). Parcel has an excellent stand of mature loblolly pines that have been thinned once and will be ready for the next thinning most anytime! The balance of the parcel consists of mature mixed hardwoods and pines. The White and Red Oaks make for excellent recreational use. Features include an 8 acre pasture field and a beautiful cabin. Cabin is approximately 1,000+/- square feet with 3 bedrooms and one bath for an ideal hunting camp. Well managed. Abundance of wildlife including deer, turkey, dove, and also wood ducks in the pond which is shared by the adjacent property owner. This won't last long!

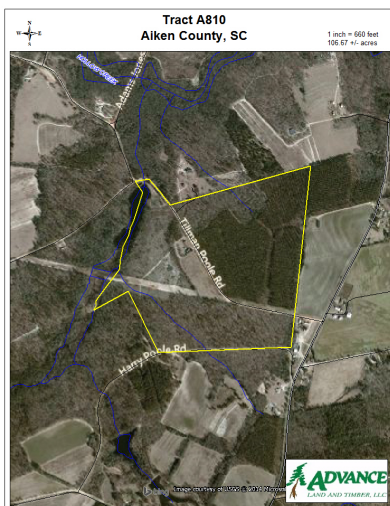
Location / Directions:

From Wagner (Aiken County) travel east on Hwy 39. As you come into Perry, take left fork (Hwy 389) and travel approximately 4 miles. Turn left on Altees Corbett Road. Travel north about 1 mile. Property fronts on Harry Poole Road (left) and Tillman Poole Road. Look for Advance Land and Timber signs. House fronts on Tillman Poole Road.

Agent:

Carwin Owens
434-841-0784

Aerial Map



The information provided on this map is believed to be accurate and is based on the best information available at this time, however, this information is in no way guaranteed. www.advancelandandtimber.com 1-800-850-9909