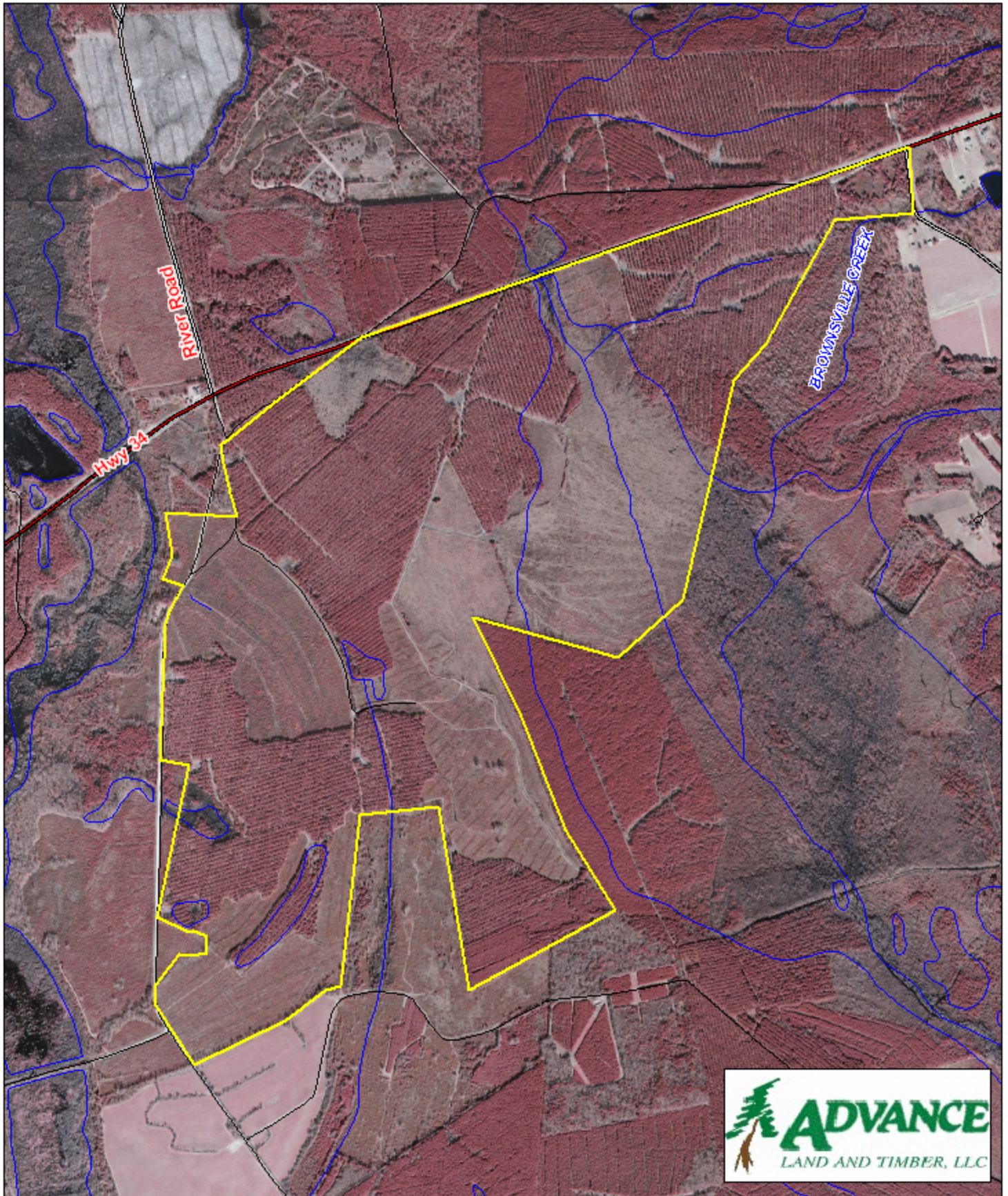




# J.P. Hodges Tract Marlboro County, SC

1 inch = 1,650 feet  
1,079.0 +/- acres



The information provided on this map is believed to be accurate and is based on the best information available at this time, however, this information is in no way guaranteed.

[www.advancelandandtimber.com](http://www.advancelandandtimber.com)  
1-800-860-9909