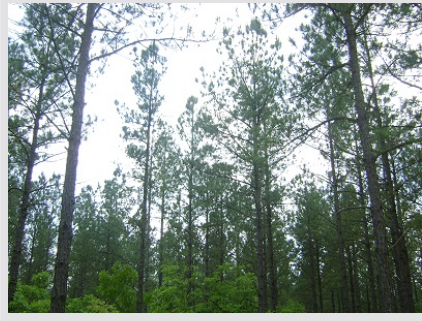


100 Acres - Kershaw County, South Carolina
Tract F215 (SOLD)



Acreage

100 Acres

General Description

Nice easily subdivided parcel with good road frontage. Nice timber growing with multiple roads dissecting property offering multiple use options! Good wildlife area!

Location / Directions:

From Kershaw take SC Hwy 157 east out of town. Turn right onto Charlie Johnson Rd (dirt road). Stay on Charlie Johnson till you see Advance Land and Timber signs. Property on both sides of road.

Agent:

Carwin Owens
434-841-0784

Aerial Map 