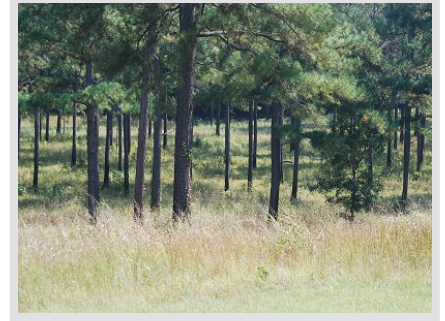


1,162 Acres - Saluda County, South Carolina

Tract A578 (SOLD)



Acreage

1162.34 Acres

TM #035-00-00-019, 036-00-00-054, 035-00-00-028, 036-00-00-075, 067-00-00-001, 035-00-00-027, 036-00-00-72

General Description

A timber investment dream! This tract is loaded with wood! Also a tremendous recreational tract. Includes Barns, houses, and sheds.

Location / Directions:

From Saluda take Hwy 172 south. Look for Advance Land and Timber signs as you reach the county line.

Agent:

Carwin Owens
434-841-0784

Aerial Map 