

**1,942 Acres - Horry County, South Carolina**  
**Tract A725 N (SOLD)**



**Acreage**

1941.9 +/- Acres

**General Description**

Consists of 1941+/- acres. This is one of the last parcels of its size and quality in Horry County. This tract has a little bit of everything. Excellent road frontage, interior roads, well stocked plantation pine with various ages which makes for an excellent timber investment and an abundance of deer, turkey and small game. This is a rare opportunity to own a tract of this quality that will someday be a great potential for development.

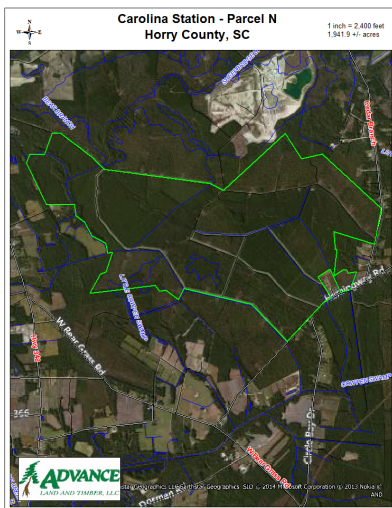
**Location / Directions:** 

From North Myrtle Beach travel west on Hwy 9 to Longs Community. Turn left on Hwy 905 toward Conway. Travel approximately 3 miles and turn right on Bear Grass Road. Travel approximately 2 1/2 miles on Hemmingway Road. Turn right and travel approximately 1 1/2 miles. Parcel fronts on the left. Parcel also fronts on Cedar Branch Road which connects Hemmingway Road with Hwy 9.

**Agent:**

Carwin Owens  
 434-841-0784

**Aerial Map** 



The information provided on this map is believed to be accurate and is based on the best information available at this time, however, this information is in no way guaranteed. www.advancelandandtimber.com 1-800-860-9909