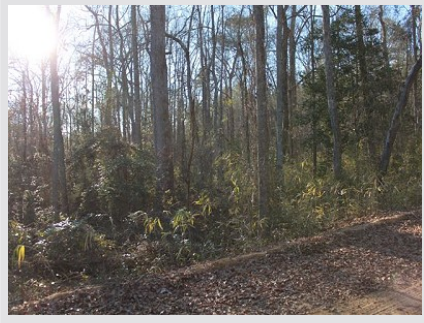


64 Acres - Orangeburg County, South Carolina

Tract A599 (SOLD)



Acreage

64 Acres

General Description

This tract is located on the line of Orangeburg and Aiken counties. 64 acres of everything you could want at a price everyone can afford. This tract is centered around a deep 4+ acre pond that has loads of summerducks in the trees and great fishing on the lower end. Plenty of deer and turkeys cover this land and there are several large food plots that are just waiting to be planted. Good growing timber (both hardwoods and planted pine) provide habitat and a good investment for the future. Awesome location for a home or a hunting camp.

Location / Directions:

From Perry, SC take Hwy 389 (John Nunn Hwy) southeast for 2.7 miles. Turn right on Warner Road and go 2.1 miles. Take a left at Cooper Pond Road and the tract will be at the end of the road behind the two gates (in front and to your left).

Agent:

Carwin Owens
434-841-0784

Aerial Map 