

**Hunting Camp Minutes from Dagmar
WMA, Cache River NWR and White River
NWR**

**7211 Hwy 70 West
Brinkley, AR 72021**

\$90,000

**1.890± Acres
Monroe County**



MORE INFO ONLINE:

ArkansasLandForSale.com

Hunting Camp Minutes from Dagmar WMA, Cache River NWR and White River NWR Brinkley, AR / Monroe County

SUMMARY

Address

7211 Hwy 70 West

City, State Zip

Brinkley, AR 72021

County

Monroe County

Type

Hunting Land, Single Family, Lot

Latitude / Longitude

34.8382834 / -91.249717

Dwelling Square Feet

1800

Bedrooms / Bathrooms

3 / 2

Acreage

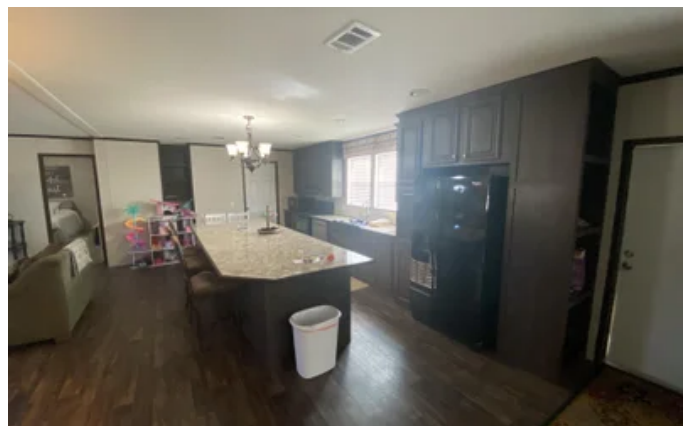
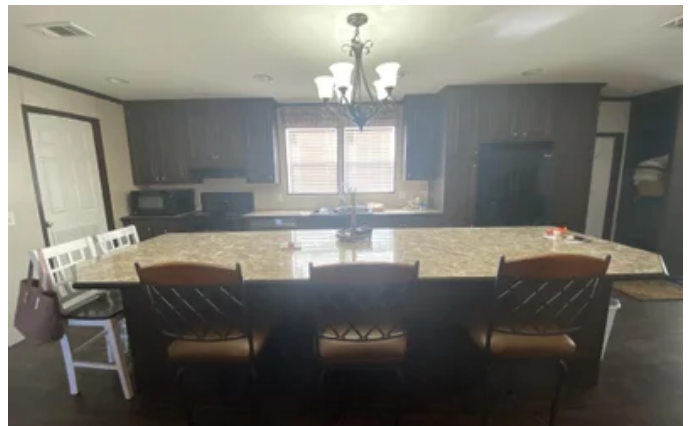
1.890

Price

\$90,000

Property Website

<https://arkansaslandforsale.com/property/hunting-camp-minutes-from-dagmar-wma-cache-river-nwr-and-white-river-nwr-monroe-arkansas/25351/>



MORE INFO ONLINE:

ArkansasLandForSale.com

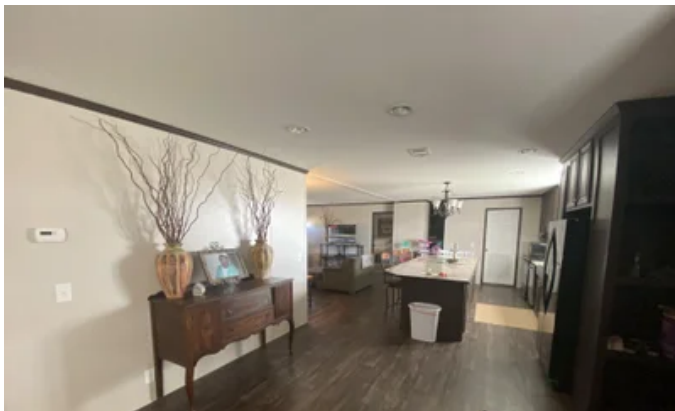
Hunting Camp Minutes from Dagmar WMA, Cache River NWR and White River NWR Brinkley, AR / Monroe County

PROPERTY DESCRIPTION

Located on HWY 70 in Brinkley makes this an excellent opportunity to have a hunting camp just minutes away from some of the best hunting Arkansas has to offer. Only 2 miles to Dagmar WMA, 7 Miles to Cache River NWR access and 12 Miles to the White River NWR access in Clarendon. It's hard to beat the location of this property. The house sits on 1.89 +/- Acres with plenty of extra room to add on another house or shop. Its an 1800sf 3 bed 2 bath mobile home with a large kitchen and living room area. Whether you're looking for a hunting camp or a place to call home, its great for both. Call Listing Agent Nick Newton at [501-276-8409](tel:501-276-8409) for more information.

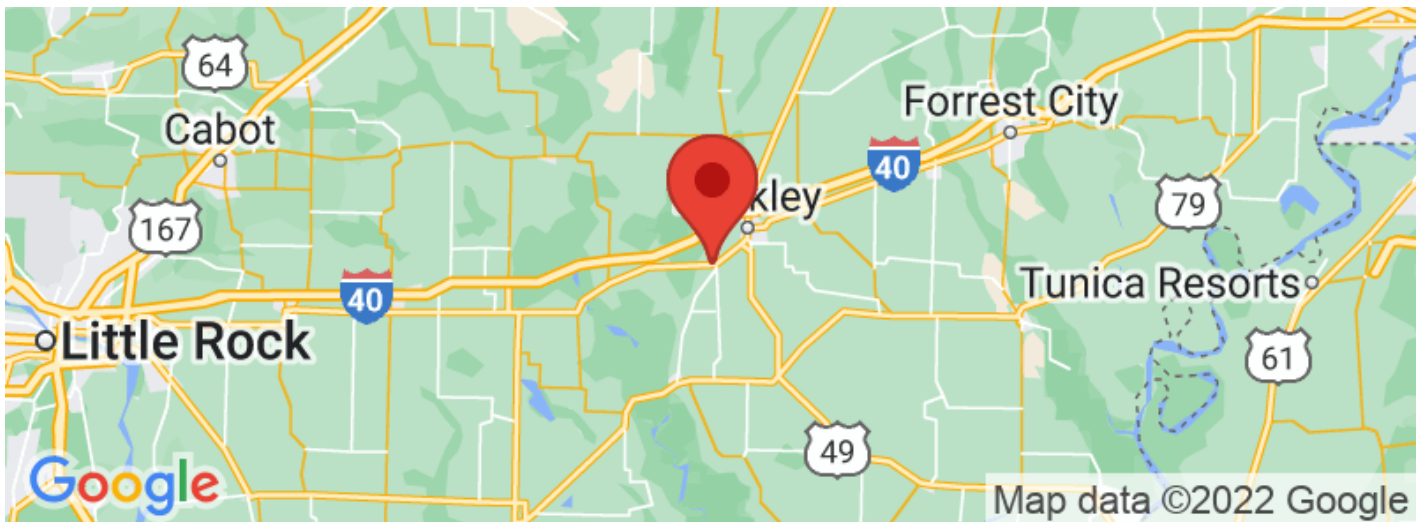
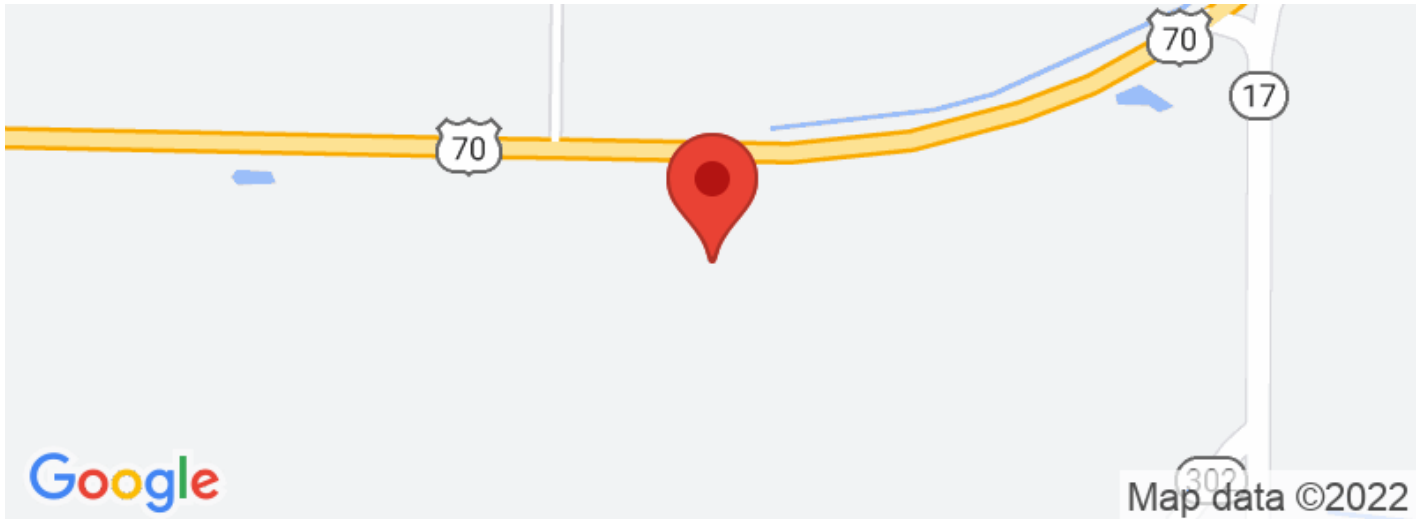


**Hunting Camp Minutes from Dagmar WMA, Cache River NWR and White River NWR
Brinkley, AR / Monroe County**



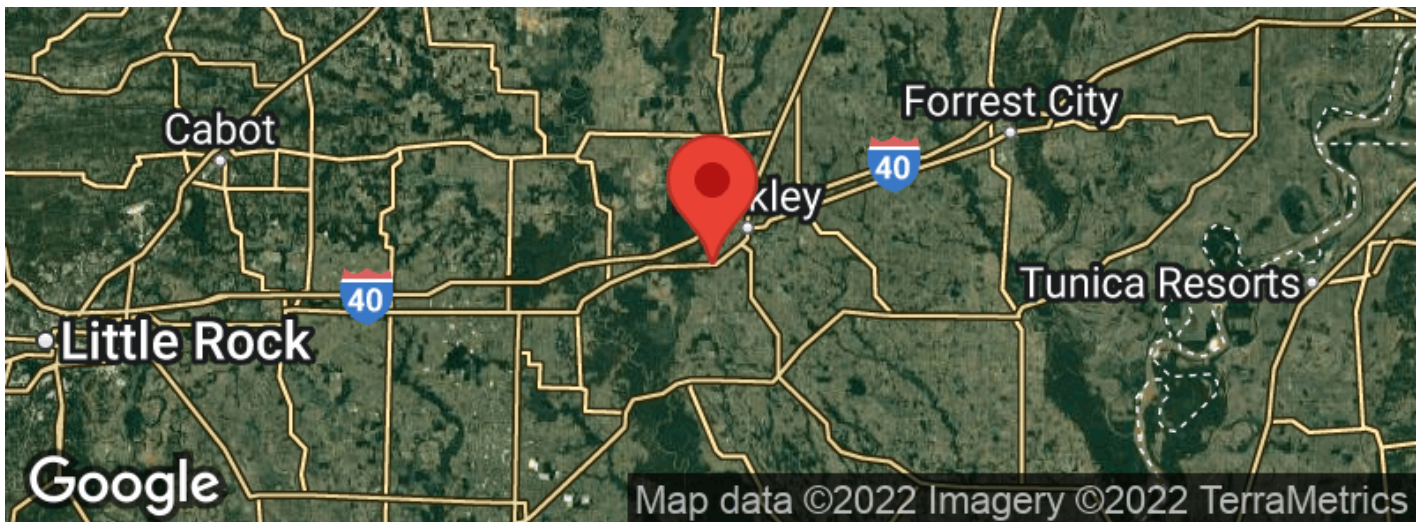
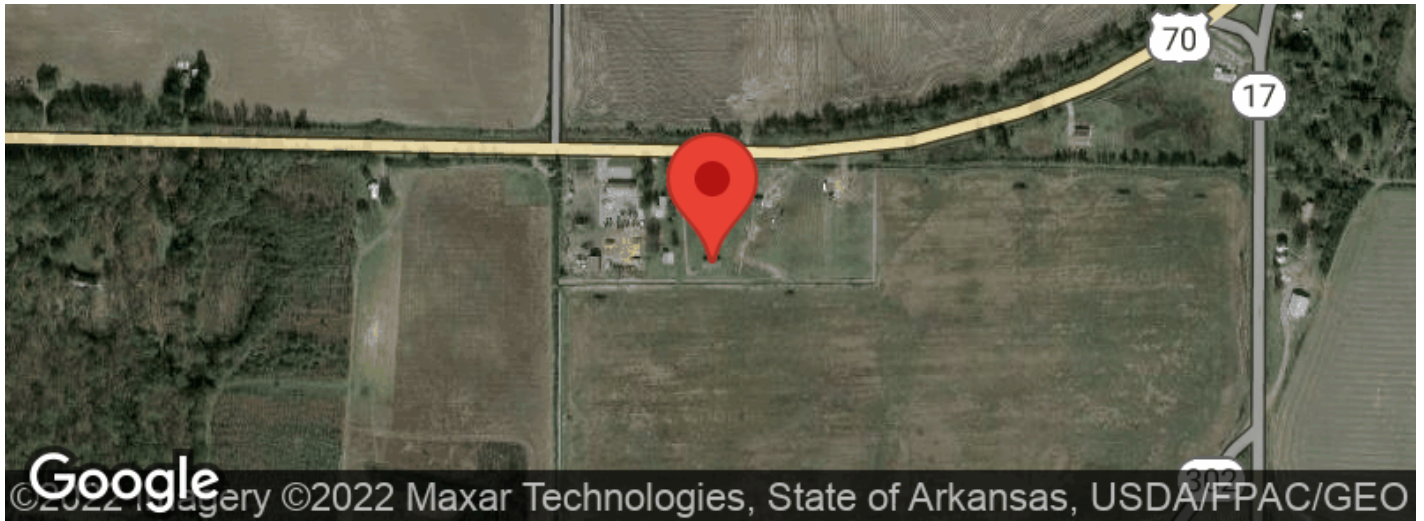


Locator Maps



Hunting Camp Minutes from Dagmar WMA, Cache River NWR and White River NWR
Brinkley, AR / Monroe County

Aerial Maps



Hunting Camp Minutes from Dagmar WMA, Cache River NWR and White River NWR
Brinkley, AR / Monroe County

LISTING REPRESENTATIVE

For more information contact:



Representative

Nick Newton

Mobile

(501) 276-8409

Email

nnewton@mossyoakproperties.com

Address

2024 North Main Street

City / State / Zip

North Little Rock, AR 72114

NOTES



NOTES

This image shows a blank sheet of white paper with horizontal ruling lines. The lines are evenly spaced and run across the width of the page. There are no margins, text, or other markings on the paper.

MORE INFO ONLINE:
ArkansasLandForSale.com

DISCLAIMERS

Information in this brochure is provided solely for information purposes and does not constitute an offer to sell or advertise real estate outside the states in which broker or agent licensed. The information presented has been obtained from sources deemed to be reliable, but is not guaranteed or warranted by the agent, broker, or the sellers of these properties. This offering is subject to errors, omissions, prior sale, price change, correction or withdrawal from the market without notice. All references to age, square footage, income, expenses, acreage, carrying capacity, and land classification, etc. are approximate. Prospective buyers are chargeable with and expected to conduct their own independent investigation of the information and the property and to rely only on those results. Sellers reserve the right to accept or reject any and all offers without liability to any buyer or cooperating broker.

Maps are provided for illustration purposes only, the accuracy is not warranted. Parcels on interactive maps are not adjusted to match aerial backgrounds. This information is for reference purposes only and is not a legal document. Data maps contain errors. The seller and seller's agent are making known to all potential buyers that there may be variations between the location of the existing fence lines and the legal description of the deeded property. Seller and seller's agent make no warranties with regard to the location of the fence lines in relationship to the deeded property lines, nor does the Seller make any warranties or representations with regard to the specific acreage contained within the fenced property lines. Seller is selling the property in an "as is" condition, which includes the location of the fences as they exist. Boundaries shown on the accompanying maps are approximate, based on county parcel data. The maps are not to scale. The accuracy of the maps is not guaranteed. Prospective buyers are encouraged to verify fence lines, deeded property lines and acreages using a licensed surveyor at their own expense.



Mossy Oak Properties Delta Land Management Co. LLC
2024 North Main Street
North Little Rock, AR 72114
(501) 604-4565
ArkansasLandForSale.com

