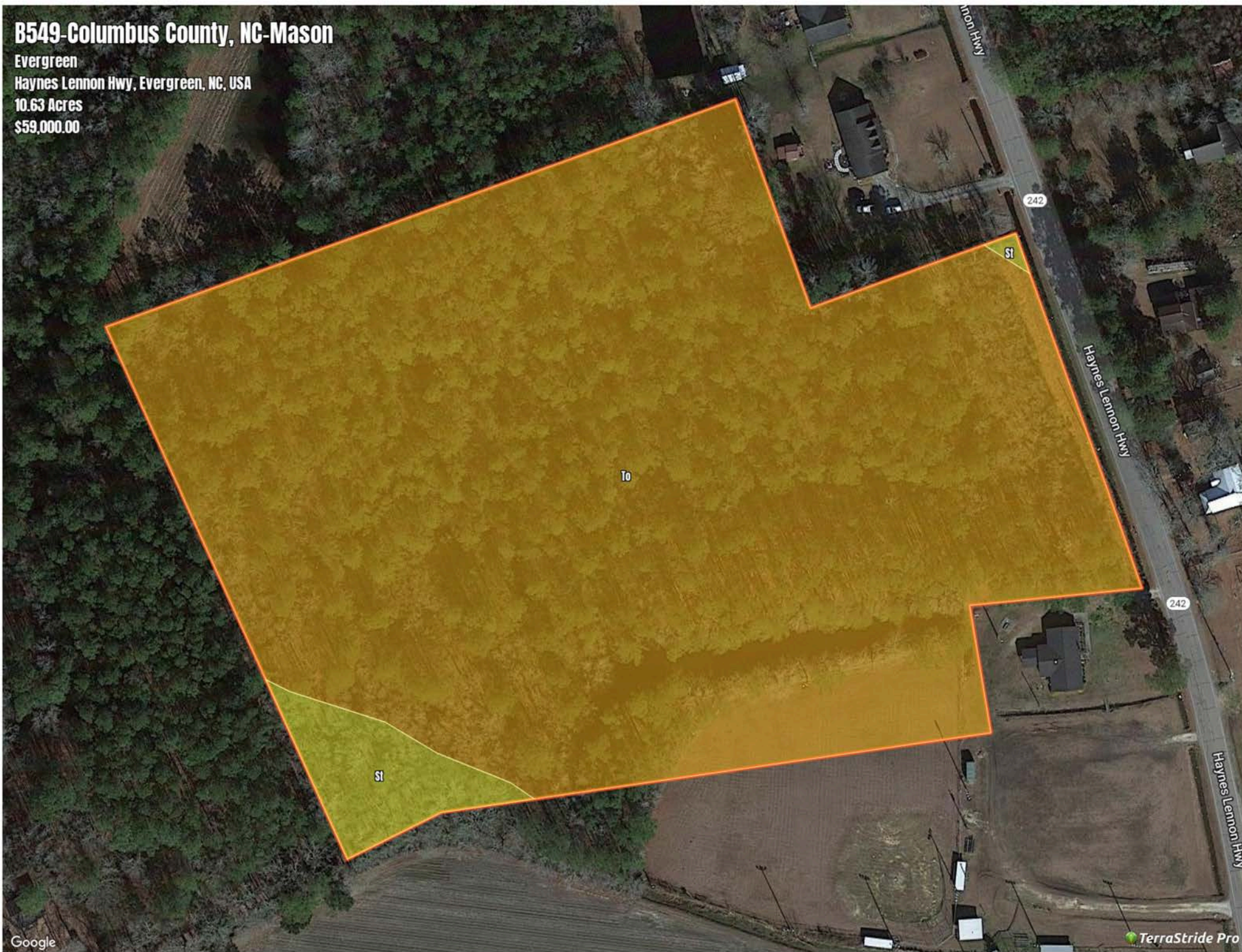


# B549-Columbus County, NC-Mason

Evergreen  
Haynes Lennon Hwy, Evergreen, NC, USA  
10.63 Acres  
\$59,000.00



# B549-Columbus County, NC-Mason

## Soil Report

Symbol	Map Unit Description	Farmland class	Area (AC)	Available Water Storage (0-150cm - Weighted Average)	Flooding Frequency (Maximum)	Drainage Class (Dominant Condition)	Drainage Class (Wettest Component)	Hydric Classification	Water Table Depth (Annual Minimum)	Water Table Depth (April to June Minimum)	Bedrock Depth (Minimum)	Soil Order
To	Torhunta fine sandy loam	Prime farmland if drained	0	14.7	None	Very poorly drained	Very poorly drained	90	0	81	0	Inceptisols
St	Stallings sandy loam	Farmland of statewide importance	0	17.6	None	Somewhat poorly drained	Somewhat poorly drained	7	53	81	0	Ultisols