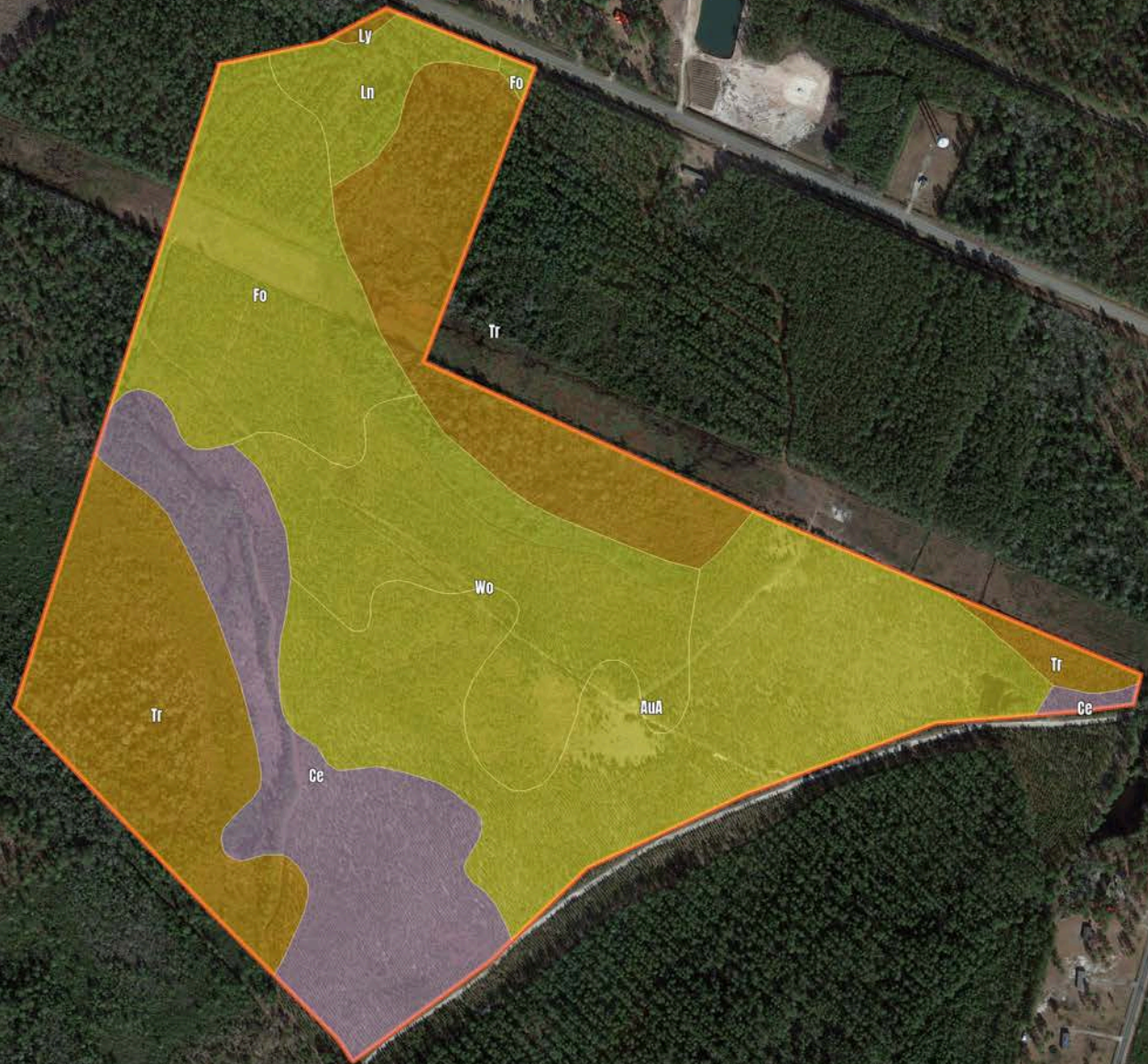


B526 - Site B-Sassafras Timber

150.36 Acres

\$601,440.00



B526 – Site B-Sassafras Timber

Soil Report

Symbol	Map Unit Description	Farmland class	Area (AC)	Available Water Storage (0-150cm - Weighted Average)	Flooding Frequency (Maximum)	Drainage Class (Dominant Condition)	Drainage Class (Wettest Component)	Hydric Classification	Water Table Depth (Annual Minimum)	Water Table Depth (April to June Minimum)	Bedrock Depth (Minimum)	Soil Order
Tr	Torhunta mucky sandy loam	Prime farmland if drained	0	14.7	None	Very poorly drained	Very poorly drained	90	0	81	0	Inceptisols
AuA	Autryville loamy sand, 0 to 3 percent slopes	Farmland of statewide importance	0	12.4	None	Well drained	Well drained	0	122	183	0	Ultisols
Ce	Centenary sand	Not prime farmland	0	11.6	None	Well drained	Well drained	5	107	152	0	Spodosols
Wo	Woodington loamy sand	Farmland of statewide importance	0	17.7	None	Poorly drained	Poorly drained	90	15	81	0	Ultisols
Fo	Foreston loamy sand	Farmland of statewide importance	0	15.4	None	Moderately well drained	Moderately well drained	5	61	91	0	Ultisols
Ln	Lynchburg fine sandy loam	Prime farmland if drained	0	18.4	None	Somewhat poorly drained	Somewhat poorly drained	6	15	76	0	Ultisols
Ly	Lynn Haven and Torhunta soils	Prime farmland if drained	0	21.7	Rare	Very poorly drained	Very poorly drained	90	0	15	0	Inceptisols