

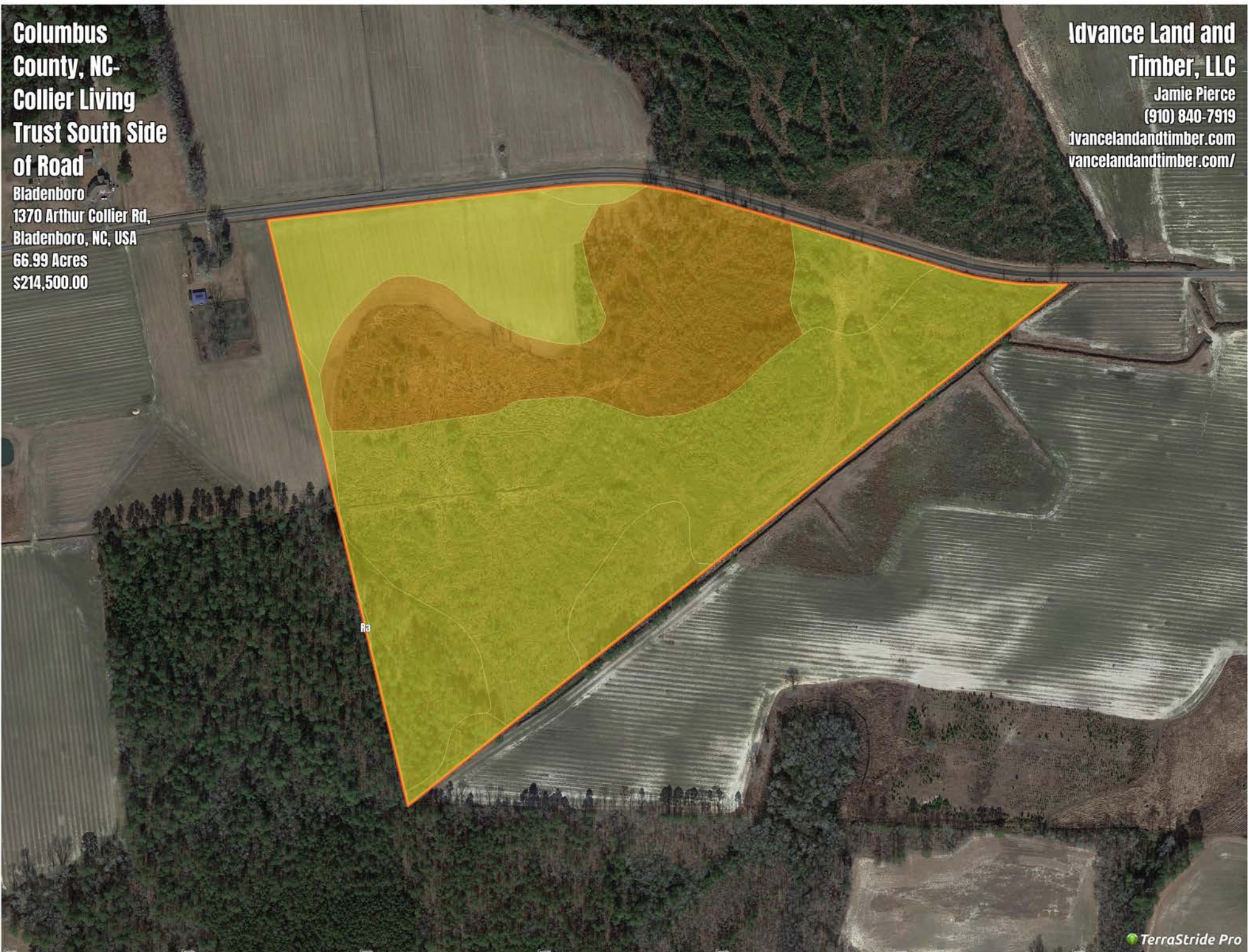
**Columbus  
County, NC-  
Collier Living  
Trust South Side  
of Road**

Bladenboro  
1370 Arthur Collier Rd,  
Bladenboro, NC, USA  
66.99 Acres  
\$214,500.00

**Advance Land and  
Timber, LLC**

Jamie Pierce  
(910) 840-7919

[advancelandandtimber.com](http://advancelandandtimber.com)  
[vancelandandtimber.com/](http://vancelandandtimber.com/)



# Columbus County, NC-Collier Living Trust South Side of Road

## Soil Report

| Symbol | Map Unit Description                           | Formland classes                 | Area (AC) | Available Water Storage (0-150cm - Weighted Average) | Flooding Frequency (Maximum) | Drainage Class (Dominant Condition) | Drainage Class (Wettest Component) | Hydric Classification | Water Table Depth (Annual Minimum) | Water Table Depth (April to June Minimum) | Bedrock Depth (Minimum) | Soil Order  |
|--------|--|----------------------------------|-----------|--|------------------------------|-------------------------------------|------------------------------------|-----------------------|------------------------------------|---|-------------------------|-------------|
| Ra     | Rains fine sandy loam                          | Prime farmland if drained        | 0         | 23.6   | None                         | Poorly drained                      | Poorly drained                     | 95                    | 15                                 | 46  | 0                       | Ultisols    |
| To     | Torhunta fine sandy loam                       | Prime farmland if drained        | 0         | 14.7   | None                         | Very poorly drained                 | Very poorly drained                | 90                    | 0                                  | 81  | 0                       | Inceptisols |
| Fo     | Fores ton loamy fine sand                      | Farmland of statewide importance | 0         | 15.3   | None                         | Moderately well drained             | Moderately well drained            | 5                     | 61                                 | 91  | 0                       | Ultisols    |
| WaB    | Wagram loamy fine sand, 0 to 6 percent slopes  | Farmland of statewide importance | 0         | 16.7   | None                         | Well drained                        | Well drained                       | 0                     | 192                                | 203                                       | 0                       | Ultisols    |
| BuB    | Butters loamy fine sand, 0 to 3 percent slopes | Farmland of statewide importance | 0         | 13.6   | None                         | Well drained                        | Well drained                       | 0                     | 122                                | 183                                       | 0                       | Ultisols    |
| NoA    | Norfolk loamy fine sand, 0 to 2 percent slopes | All areas are prime farmland     | 0         | 19.3   | None                         | Well drained                        | Well drained                       | 5                     | 122                                | 152                                       | 0                       | Ultisols    |