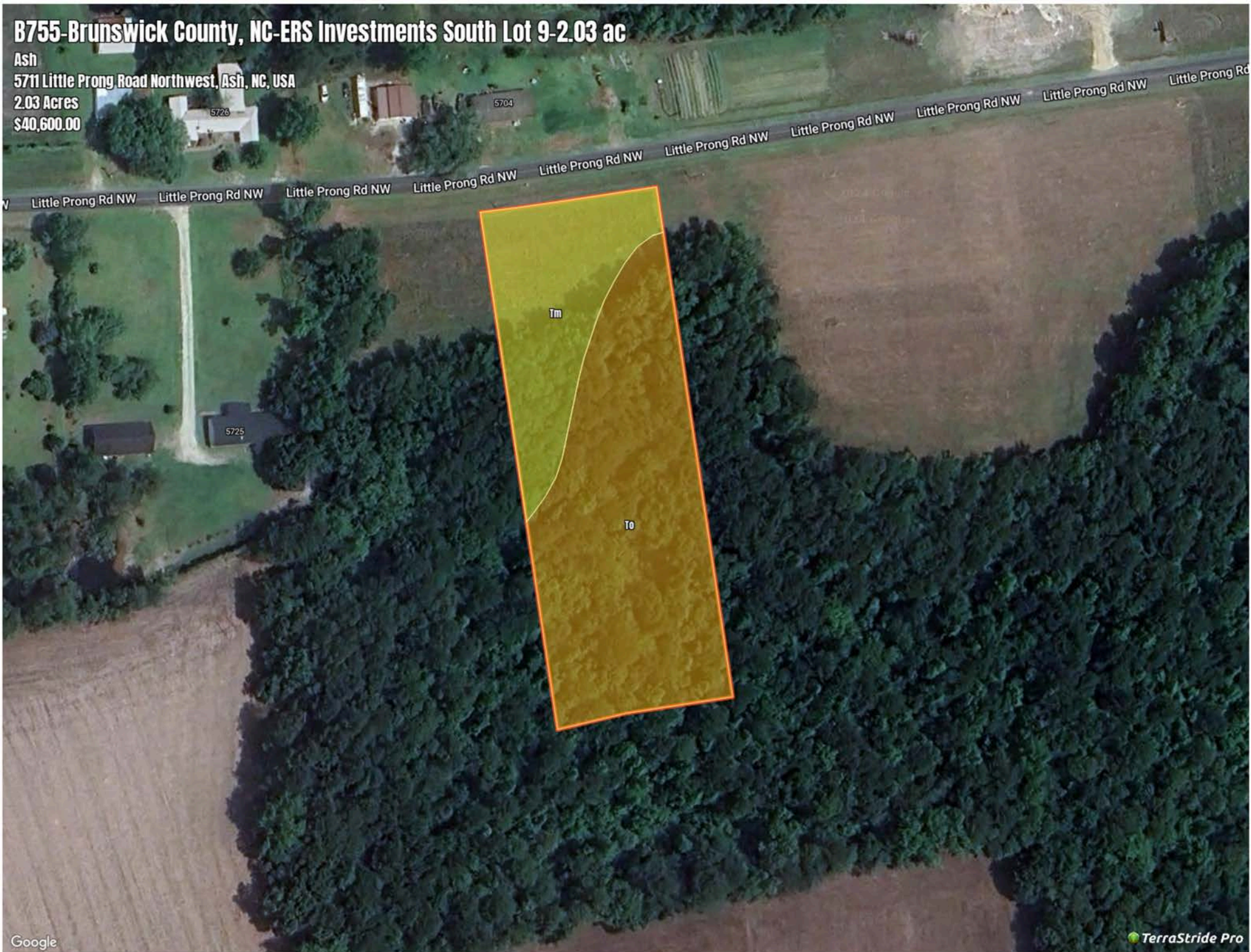


B755-Brunswick County, NC-ERS Investments South Lot 9-2.03 ac

Ash
5711 Little Prong Road Northwest, Ash, NC, USA
2.03 Acres
\$40,600.00



B755-Brunswick County, NC-ERS Investments South Lot 9-2.03 ac

Soil Report

Symbol	Map Unit Description	Farmland class	Area (AC)	Available Water Storage (0-150cm - Weighted Average)	Flooding Frequency (Maximum)	Drainage Class (Dominant Condition)	Drainage Class (Wettest Component)	Hydric Classification	Water Table Depth (Annual Minimum)	Water Table Depth (April to June Minimum)	Bedrock Depth (Minimum)	Soil Order
To	Torhunta mucky fine sandy loam	Prime farmland if drained	0	13.9	None	Very poorly drained	Very poorly drained	90	0	81	0	Inceptisols
Tm	Tomahawk loamy fine sand	Farmland of statewide importance	0	12.6	None	Moderately well drained	Moderately well drained	7	61	76	0	Ultisols