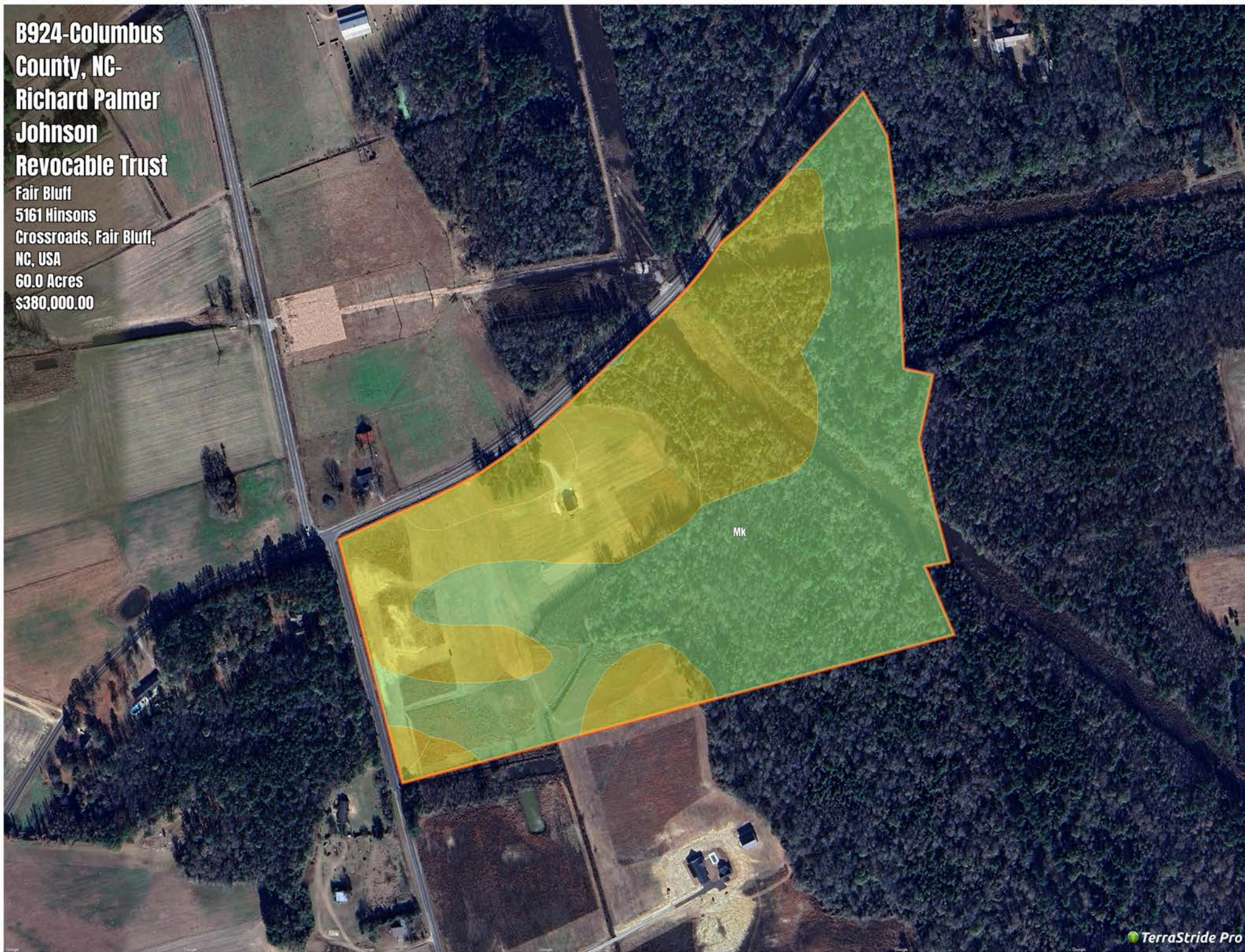


**B924-Columbus
County, NC-
Richard Palmer
Johnson
Revocable Trust**

Fair Bluff
5161 Hinsons
Crossroads, Fair Bluff,
NC, USA
60.0 Acres
\$380,000.00



B924-Columbus County, NC-Richard Palmer Johnson Revocable Trust

Soil Report

Symbol	Map Unit Description	Farmland class	Area (AC)	Available Water Storage (0-150cm - Weighted Average)	Flooding Frequency (Maximum)	Drainage Class (Dominant Condition)	Drainage Class (Wettest Component)	Hydric Classification	Water Table Depth (Annual Minimum)	Water Table Depth (April to June Minimum)	Bedrock Depth (Minimum)	Soil Order
Mk	Muckalee sandy loam, frequently flooded	Not prime farmland	0	16.2	Frequent	Poorly drained	Poorly drained	80	15	23	0	Entisols
NoB	Norfolk loamy fine sand, 2 to 6 percent slopes	All areas are prime farmland	0	19.1	None	Well drained	Well drained	5	122	152	0	Ultisols
Jo	Johns fine sandy loam	Prime farmland if drained	0	16.8	Rare	Moderately well drained	Moderately well drained	6	61	76	0	Ultisols
Lu	Lumbee fine sandy loam	Prime farmland if drained	0	15.4	Rare	Poorly drained	Poorly drained	90	0	81	0	Ultisols
WaB	Wagram loamy fine sand, 0 to 6 percent slopes	Farmland of statewide importance	0	16.7	None	Well drained	Well drained	0	192	203	0	Ultisols