

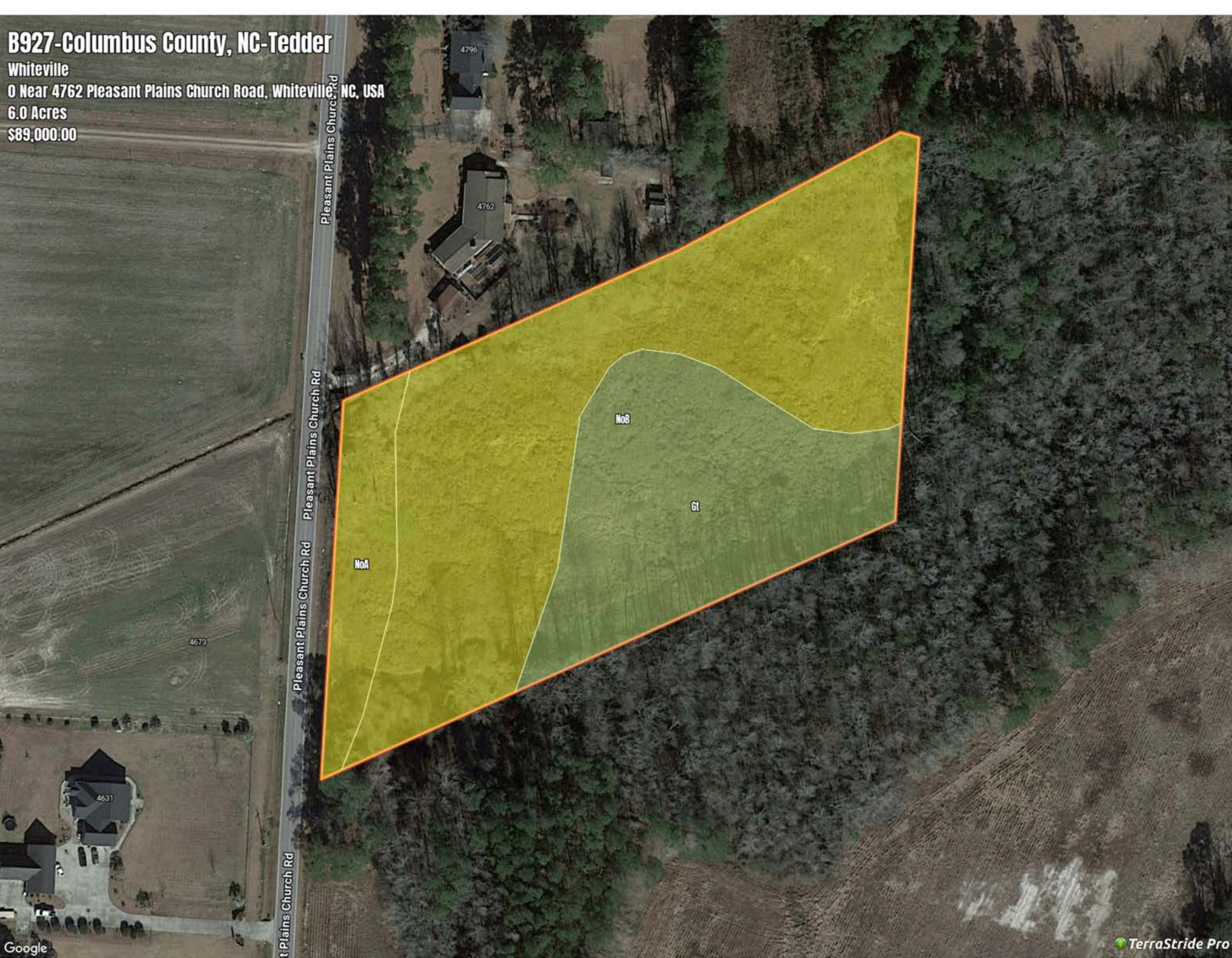
B927-Columbus County, NC-Tedder

Whiteville

0 Near 4762 Pleasant Plains Church Road, Whiteville, NC, USA

6.0 Acres

\$89,000.00



B927-Columbus County, NC-Tedder

Soil Report

Symbol	Map Unit Description	Farmland class	Area (AC)	Available Water Storage (0-150cm - Weighted Average)	Flooding Frequency (Maximum)	Drainage Class (Dominant Condition)	Drainage Class (Wettest Component)	Hydric Classification	Water Table Depth (Annual Minimum)	Water Table Depth (April to June Minimum)	Bedrock Depth (Minimum)	Soil Order
NoB	Norfolk loamy fine sand, 2 to 6 percent slopes	All areas are prime farmland	0	19.1	None	Well drained	Well drained	5	122	152	0	Ultisols
Gt	Grifton fine sandy loam	Prime farmland if drained	0	20.7	None	Poorly drained	Poorly drained	90	0	15	0	Alfisols
NoA	Norfolk loamy fine sand, 0 to 2 percent slopes	All areas are prime farmland	0	19.3	None	Well drained	Well drained	5	122	152	0	Ultisols