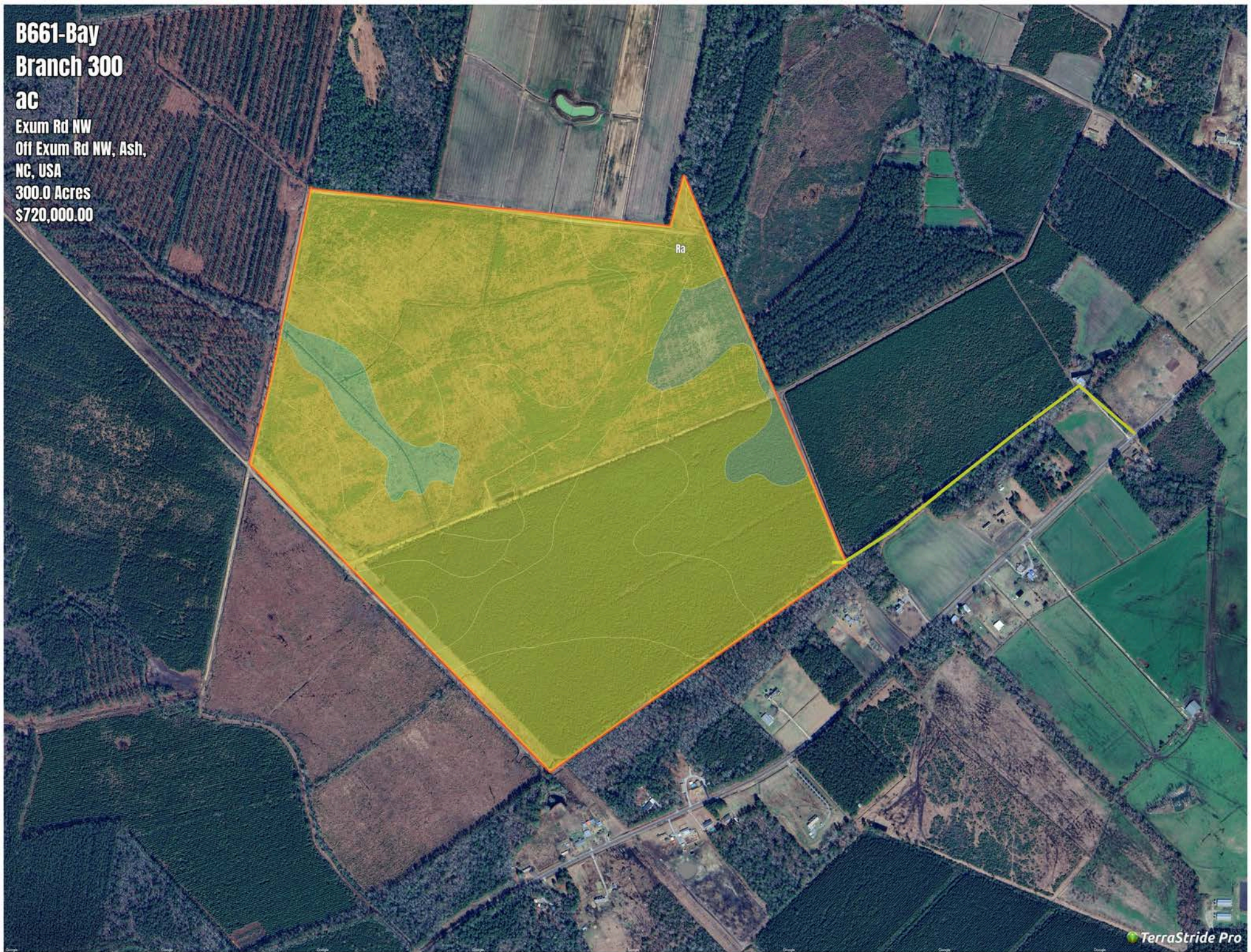


**B661-Bay  
Branch 300**

**ac**

Exum Rd NW  
Off Exum Rd NW, Ash,  
NC, USA  
300.0 Acres  
\$720,000.00



# B661-Bay Branch 300 ac

## Soil Report

Symbol	Map Unit Description	Farmland class	Area (AC)	Available Water Storage (0-150cm - Weighted Average)	Flooding Frequency (Maximum)	Drainage Class (Dominant Condition)	Drainage Class (Wettest Component)	Hydric Classification	Water Table Depth (Annual Minimum)	Water Table Depth (April to June Minimum)	Bedrock Depth (Minimum)	Soil Order
Ra	Rains fine sandy loam	Prime farmland if drained	0	23.6	None	Poorly drained	Poorly drained	90	15	46	0	Ultisols
Pn	Pantego mucky loam	Prime farmland if drained	0	29.1	None	Very poorly drained	Very poorly drained	90	0	81	0	Ultisols
Fo	Foreston loamy fine sand	Farmland of statewide importance	0	15.3	None	Moderately well drained	Moderately well drained	5	61	91	0	Ultisols
Wo	Woodington fine sandy loam	Prime farmland if drained	0	19.5	None	Poorly drained	Poorly drained	90	15	81	0	Ultisols
Gt	Grifton fine sandy loam	Prime farmland if drained	0	20.7	None	Poorly drained	Poorly drained	90	0	15	0	Alfisols
Ly	Lynchburg fine sandy loam	Prime farmland if drained	0	18.8	None	Somewhat poorly drained	Somewhat poorly drained	7	15	76	0	Ultisols
Mk	Muckalee loam	Not prime farmland	0	16.2	Frequent	Poorly drained	Poorly drained	80	15	23	0	Entisols
Tm	Tomahawk loamy fine sand	Farmland of statewide importance	0	12.6	None	Moderately well drained	Moderately well drained	7	61	76	0	Ultisols