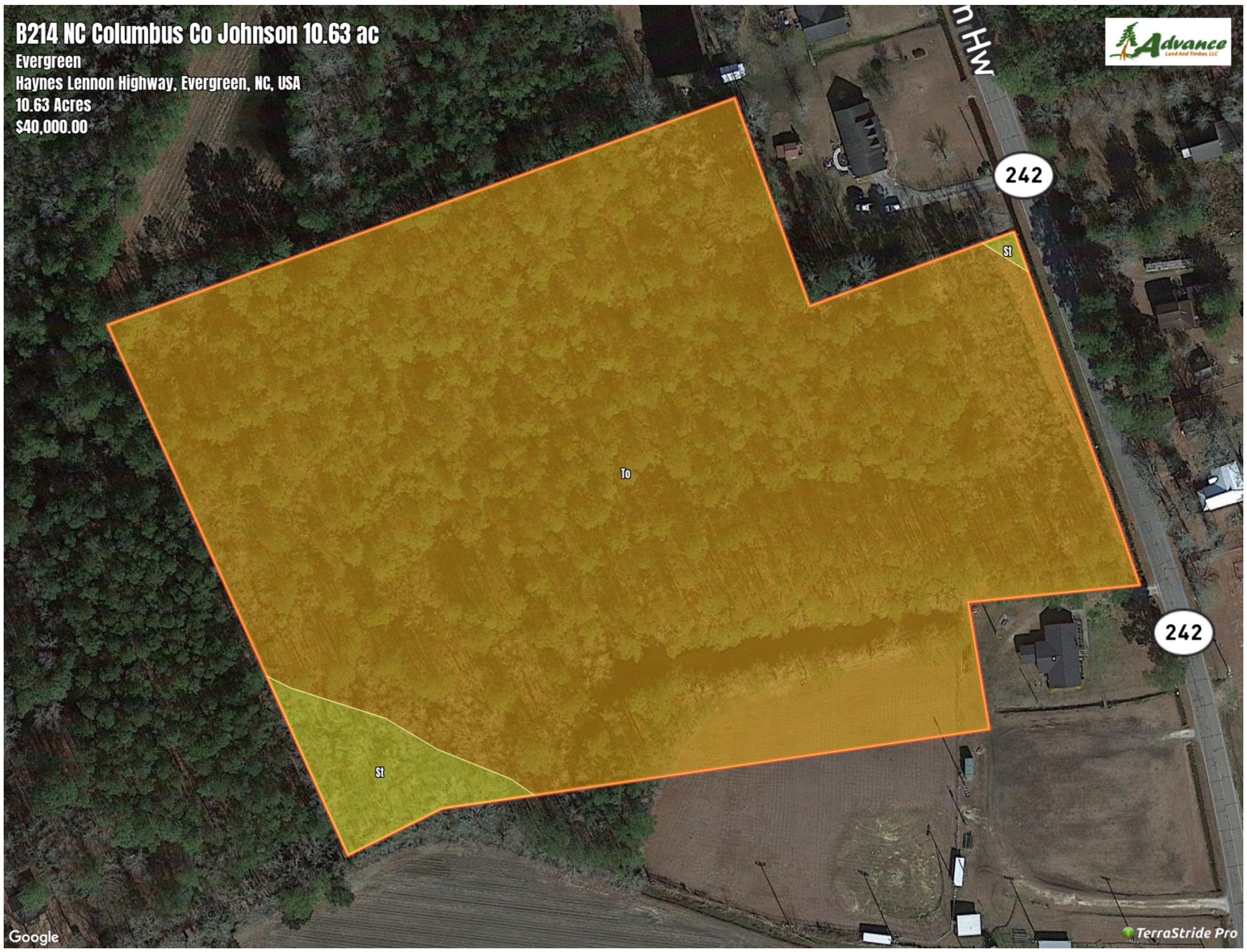


B214 NC Columbus Co Johnson 10.63 ac

Evergreen
Haynes Lennon Highway, Evergreen, NC, USA
10.63 Acres
\$40,000.00



B214 NC Columbus Co Johnson 10.63 ac

Soil Report

Symbol	Map Unit Description	Family and class	Area (AC)	Available Water Storage (0-150cm - Weighted Average)	Flooding Frequency (Maximum)	Drainage Class (Dominant Condition)	Drainage Class (Wettest Component)	Hydric Classification	Water Table Depth (Annual Minimum)	Water Table Depth (April to June Minimum)	Bedrock Depth (Minimum)	Soil Order
To	Torhunta fine sandy loam	Prime family and if drained	10.45	14.7	None	Very poorly drained	Very poorly drained	90	0	81	0	Inceptisols
St	Stallings sandy loam	Family and statewide importance	0.45	17.6	None	Somewhat poorly drained	Somewhat poorly drained	7	53	81	0	Ultisols